

Email:ivovanderrijt@hotmail.com

The vortex.

A vortex is not an object in physical terms it is a concept. Just as a wave is a concept.

You cannot have a vortex or a wave without an object or objects. In science it is best described as an object that travels with a forward rotational motion. Because it is a concept with an actual physical object as underlying basis I would recommend to state it is a scientific concept. This segregates this concept from religious (or other concepts) of which some have zero physical backing. It is this why I fall so often over the scientific definition of concept.

Light is a vortex. A pressure differential from atom to atom. Atoms themselves are a vortex cone buildup of gazillions of vortices. Time is flow within these vortices. Even flow can be reversed or speeded up. So even the concept time can alter.

Why a vortex?

*)In a collision chamber the waves, that occur after a collision, have sometimes a circular or counter circular motion. The only way why a wave becomes rotational is under the influence of a circular motion. In most cases these waves are mistaken for objects . Waves do not circle by themselves.

*)Elemental oscillations are contributed to flow. Low elemental oscillations give rise to stable flow hence strong`` E.M. fields``.

*)All stars have a round shape.

*)All atoms have round/circular shape.

*)All galaxies show circular flow.

*)All births of galaxies start with flow.

*)A droplet of water has round shape.

Vortex rationally explained:

It takes motion of smaller objects to propel a larger object!. Simply look at any combustion engine in the world. Material is being burned causing motion of smaller objects (like steam) this causes the car or steam train to move. So what is propelling an object in gravity.(accelerated motion?) The only thing that can do it are smaller objects which are already in motion..

Electrical resistance.

Electrical resistance is motion of atoms (i.e. temperature) blocking normal vortex flow. Nuclear Fusion will only work if flow is optimal. So no waves inside of the flow! and as low electrical resistance as possible (extreme cold).

$$E=mc^2$$

Little c is the change of the vortices shape. Not the actual motion of the underlying objects!. C² is not a signal that travels both ways. A square (especially in relation to distance. C is in m/s) indicates that the element has an area within a round shape .It is sphere like due to interaction of vortices. E describes how much this shape can contract and how much push is generated on the exiting vortices. C² also relates to the shape of the involved vortices. M is how much `` mass `` is being pumped. Mass is fluid object. Because the object itself is non-compressible the resultant is a swing on the exiting vortices. It cannot speed up the flow as the object itself is non-compressible. Although the flow of the vortex is constant the distance it travels being pumped up and down is longer than the distance covered in ELF extreme low frequencies. Note again c = speed of the change of shape of the vortex not the flow itself!.

$M=E/C^2$ can best be described as mass is energy that passes through an area in (time *time). I see time AS flow so we get .mass is PUSH (energy) on FLOW that passes through an area squared.

A PUSH on the flows in a certain area. That's what mass is.

Let's add negative signs to the equation:

$$-E = -mc^2$$

The Energy that is required to expand the atom is the mass (object that is required) that travels (fills an area with flows) into the atom.

So:

$$E= mc^2$$

The energy that can contract an atom is the mass that leaves the atom.(the area in flows)

Personally I don't like math but it tells something:

$$c^2 = 1/(\epsilon_0\mu_0) \text{ So:}$$

$$E=m*1/(\epsilon_0\mu_0) \text{ or } E=m/(\epsilon_0\mu_0)$$

ϵ_0 . Electric field constant in vacuum.

$\epsilon_0 = D/E$ D= electric **displacement** field. In this formula E is electric field.

μ_0 = permeability of magnetic field in vacuum.

In formulations mass has a direct relation to electric displacement in vacuum!

Electric is forward flow of objects. Magnetic is circular flow. Because of vortex E cannot be without the M. Faradays laws explained. E starts flowing in a metallic thread if it is under the influence of rotating magnetic flow. E in visible light is only observable when atoms contract sending waves through the **exiting** vortices from the atom.

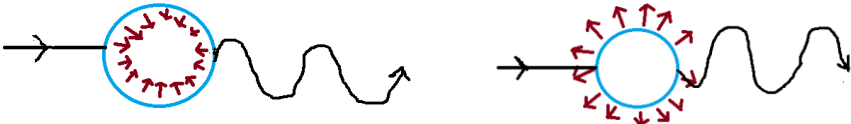


Figure 1 contraction of (part of the)atom. Figure 2 expansion of (part of) the atom.

Arrows in both figures show incoming and exiting flow of vortices. Because entering and exiting vortices are in all directions there is no motion on the atom exerted then an oscillation.

Pressure differentials are a rational explanation for gravity. As you have bigger rotational flow directed below you then above. Pressure differentials interact by the atoms so this explains why material (matter) and vortices themselves aggregate. Angle is one thing rationalizing in flow another. All vortices flow towards and away from atoms so you have to look it from a more to less pressure (bigger circular Magnetic flow)perspective hence the thrust executed on the atom. You cannot bend something that is empty! Bending empty space is the most stupidest thing I have ever read.

Figure 3.

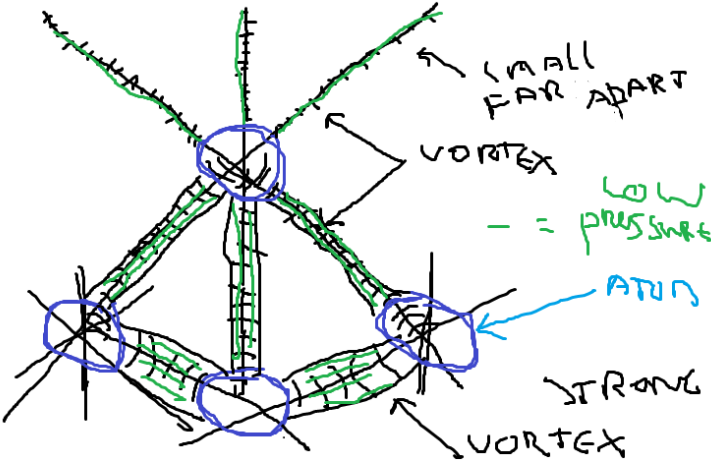


Figure 3. is greatly exaggerated in order to visualize. Atoms are a build of gazillions of small vortices. Magnetic circular flow gets just a little bigger when cones (atoms are interacting vortex cones) get closer. This causes lower pressure ``under`` the atom then above causing an acceleration of the atom.

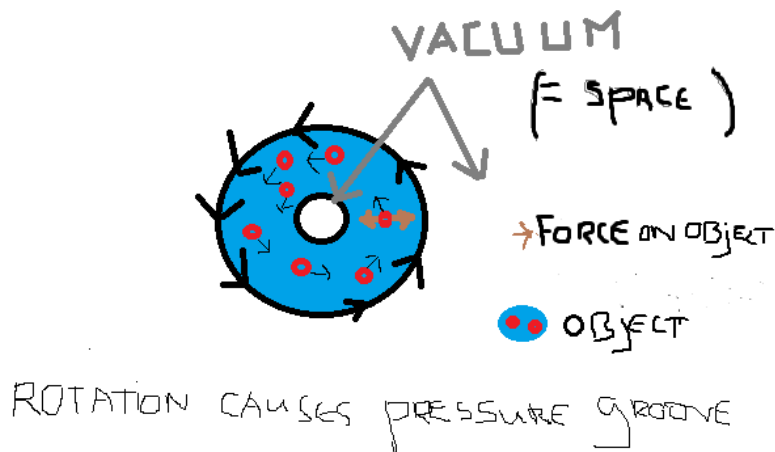


Figure 4 . Internal view vortex "far away" connection.

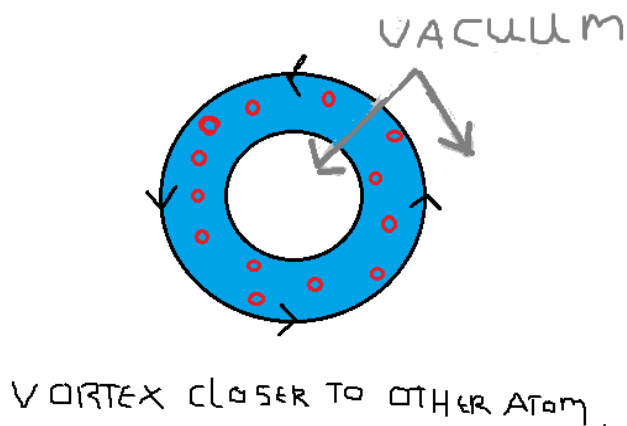


figure 5. Internal view vortex "close by" connection.

There is NO REST mass in the universe everything is connected via vortices. Everything is in MOTION. All atoms are always in motion! Otherwise they would not exist.(having physical presence).The permanent motion of smaller objects builds larger object(s).

The non-compressible object.

The vortex consists of non-compressible object. Just as a liquid can form vortices it is also a non-compressible fluid. Although the presence of vacuum inside and outside the vortex (seen through the inside view) may suggest it can be fully compressed into the vacuum, it cant. The vacuum remains required otherwise the vortex would not have borders. It is circular motion (magnetic) that sets the borders .

The fact that it is non-compressible explains light speed. Fill a garden hose with liquid and apply push on it. How fast does water come out of the hose if push is generated over large distance. Remember that this vortex does not even have an outlet. It are just the waves of fluid object moving forward. (electric). Water has even shear forces when being propelled in a hose. Just ask the question ``How strong are the friction (shear) forces from an object with vacuum?``.

Waves inside the vortex. The exact location of the waves inside the vortex is determined from what atom the vortex emanated from. I will explain this further in the layering of the atom as seen through the cone model of the atom.

What can be attributed to vortex is that it is not a standing wave it is just flow connecting atoms. So light (form of E.M) is not a standing wave. The way EM flows (the waves that are exiting the atom)determines whether we deal with visible light/ infrared/ x rays etc. Entering EM flow towards the atom is difficult to detect as it has very low frequencies. These very low frequency (electric) object flows fast especially in combination with the extreme colds of space. It is within space that fusion occurs.

I have to explain fast vs slow. Fast electrical (forward) flow has less (rotational) magnetic flow. Smaller area to flow through.

Fast magnetic flow has less electric forward flow.

Big area to flow through. Such as an atom in comparison to light.

If an atom pushes it is the pressure wave that travels through the flow. It says nothing in regards of the actual flow speed. It does however alter flow speeds because of the waves that were generated by the atom. Because a wave increases and the immediately decreases flow speed the resultant is still normal speed. That is normal time.

The increase and decrease of flow speed also explains why the incoming flows into the atom have no wave. This speed remains the same.

Sum of vortices. Because of the alternating speeds in the vortex Light can be considered as a sum of vortices. (insert drawing)

Ionization

There is flow towards atoms via physical connected atoms or through E.M vortices and there is flow away from the atoms to physical attached atoms or through exiting E.M. vortices(ionization). In ionization the flows exiting the atom receives an amplitude (which is also a push a swing or a **wave**). The pressure this swing gives can be detected as EM. Quantumjumping of the atom is the interaction between forward flow towards atoms and amplitude given exiting flow. You can visualize this best by giving a push on water. An ionized atom (vortexcone) can best be seen as a pump that pushes on all exiting flows in all directions. Because action =-reaction the element /atom/vortex cone oscillates causing multiple waves.

Quantum.

It is a word I frequently hear and read. But it is better to replace it with vacuum.

Permanent magnetism.

A permanent magnet does not move just as an atom in vacuum away from any star does not move.

The sum of all flows within a normal magnet is zero because the magnet does not move on its own.

A permanent magnet can be cut in half and it is still a permanent magnet with same orientation of poles. The flow is there but again the sum of all flows has to be zero otherwise magnets would move or rotate themselves.

Personally I think the layering (and orientation) induced by electric flow through metal (iron) says something relevant of how this flow is oriented. But it is not Clockwise top Counterclockwise at the bottom. Maybe even 1 layer CW and the next layer of atoms CCW. Depending on how electric flow within the magnet is oriented.

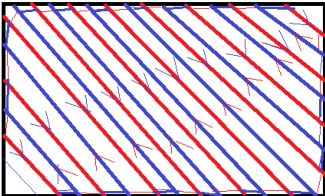


Figure 5. The sum of all flows within a permanent magnet is 0. The flows are determined through orientation of electric bonds within the magnet.

You can cut above magnet anyway you like and you still have North and South pole in the structure.

It is still a magnet. If heated however these bonds disorient and the flow is disrupted.

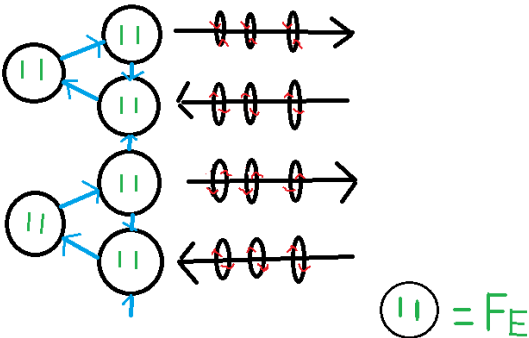


Figure 6. magnetic vortices and orientation close to permanent iron magnet.

It is because cw and ccw turning vortices are close to each other they repel in motion and therefore form a donut shape magnetic field. This is similar to the atom model later discussed. So therefore it is very important to go into magnetism first.

What a magnet does is induction of flow in metals towards the magnet because of interaction with both CW as CCW flow from the permanent magnet. Hence the metals flows towards the magnet. All of matter flows.

Again here magnetism has to do with orientation of vortex cones (atoms) through electric bonding. The permanent flow of electricity through metals is REDIRECTED and increased towards magnets. The interaction of vortices can be clearly seen in 2 adjacent magnets. It is the motion and orientation of vortices themselves that magnets can repels or attract another. This however has nothing to do with the direction of flow within the vortex!.

The sun is a very strong electromagnet. Rotation of large masses, including (cooling) stars, can actually influence the flow within the vortex. This is gravity but because time is flow effects can occur.

Antimatter:

If flow is one direction in regular matter the counter flow can be seen as an anti-flow. If anti-flow vortices interact it can give rise to antimatter.

Matter and antimatter completely oppose each other in direction so they terminate both when in contact releasing large quantities of the normal flowing object. Because of neutralization of the flow.

Because anti-matter has a very short lifespan it must be seen as an occurrence.

Charge:

*)Static electricity and Negative charge

If electric object accumulates because flow is obstructed via layers of different material or the alignment of vortex cones is random (could be caused by temperature/pressure of gasses). Obstruction of flow leads to a buildup of object or a restricted flow. I call this negative charge.

*)Positive Charge:

If electric object flow is increased we speak of positive charge. Alignment of vortex cones (matter) causes the earth to be positively ``charged``. In fact charge is merely an accumulation of object (negative charge) through obstructed flow or increased flow through alignment in metals (positive charge). Earth is also a metallic object created by silicon. It is a crystalline structure because of disposition from gas to solid. This crystalline structure has electric bonds orientated in such a way that flow is increased. Vortex cones closer to each other change the shape of the vortices resulting in pressure differences. This is gravity.

Lightning:

Electric objects flow from the sun to the atmosphere that is a very great insulator (a blocker of normal flow) so electric object gets trapped. The entrapment can be seen in the rise of temperature of the atmosphere on a sunny day. Temperature itself gives rise to further blocking of the flow.

Pushes on the flow emanating from stars enter both clouds, air and earth surface (water soil) Clouds have electric bonds so the speed of flow is increased then it hits air which is not tight in with bonds plus the temperature is also increased blocking flow. Electric object gets ``trapped`` in the cloud. The Voltage increases in the cloud until it discharges the electric object towards a point where flow (bonding) is greatest (earth). Flow is then dissipated on all exiting vortices from earth (slow circular magnetic with zero push flows) back to entering vortices in atoms like in suns. The electric object from the atmosphere reenters the cloud after the lightning discharge filling up the cloud with new object. This causes the atmosphere to cool down. If atmosphere cools down electric object travels faster.

The cooling of the atmosphere often occurs during the evening as the push from the suns atoms is less (in an angle) . This results in backflow of electric object.

Rotation of stars.

Because the entering flow is faster (small magnetic) and the exiting flows in stars is slower (big magnetic) they rotate. Rotation is also determined by the composition of the star. As this determines the way object leaves the star.

Moon.

If rotation stops like in our moon entering and exiting flows are in balance .

Temperature:

Usefull info from wiki:

``Because lower frequency electrical fields penetrate nonconductive materials far more deeply than do microwaves.`` We are dealing with a 3 dimensional entity.

``Typical domestic microwave ovens operate at 2.45 GHz, but 0.915 GHz ovens also exist. This means that the wavelengths employed in microwave heating are 12 or 33 cm. This provides for highly efficient, but less penetrative, dielectric heating.``

Dielectric heating (dipole motion) is physical rotation of the water molecule so it achieves kinetic motion and bounces to other molecules. How does this physical rotation occur?

Electric (forward flow) goes in waves (see ionization)through the molecule of water.

Stable Forward flow and circular magnetic flow orientates a molecule if silent. See a water droplet . In waves especially at a certain wavelength (Push) this orientation is disrupted. The disruption is in the electric bonding of elements within the molecule.

Electric bond.

An electric bond is forward and backwards flow from elements within the molecule. In comparison to light this is huge. Destruction or distortion of these flows results in a plasma. See ionization.

Superconductivity.

<http://www.youtube.com/watch?v=VyOtIsnG71U> by Tel Aviv university of Israel.

Temperature affects flow from and towards magnets. As it increases the flow inside of the superconductor. CW and CCW turning flow keeps the superconductor at a position close to a strong magnet that induces the flows from and towards it.

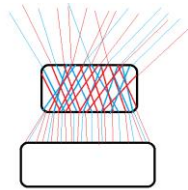


Figure 7. Speeded up flow through superconductor.

Waterflow through a drain on northern and southern hemisphere explained.

Water flows CW and CCW towards a drain on each side of this earth. This clearly demonstrates the magnetic flow that is present and the physical interaction that occurs from flow of object to vortex cones. Again gravity is a ``small`` vortex from atom to atom and a ``wider`` vortex from atom to atom thing (stronger vortices attached to the side of water orientating earth then the other side) so it has nothing to do with how this EM flow is inside the vortex. Same with magnets is that CW flow from one side is CCW flow on the back (1 vortex). But again there is CW and CCW flow close to each other otherwise there would be no alignment (>1 vortex).

The Cone Model of the atom.

When light hits light matter forms.

The, in my opinion, already correct models for atom (dandelion) neutron and proton are already presented by the scientist Bill Gaede on youtube.

An atom is a giant shell (in comparison to light) that revolves. Its magnetic circular flow (the size of the outer shell) is determined by the rotation of the vortices that build the atom. Both as in the vortex of light the shell is determined by the amount of vacuum that binds the atom together and the speed of the magnetic flow.

Vacuum is the ``gluon`` of the atomic model now presented. I don't use particles to fix a model up.

Going from neutron to proton is simply the arrangement of vacuum within the atomic shell.

A neutron is a buildup of enormous amounts of vortices coming together at a certain location. They come together because of the CW entering and CCW exiting vortices from that location. They come from all directions. You can visualize this by imagining the circular magnetic flow that arranges the vortices distribution towards and from that location.

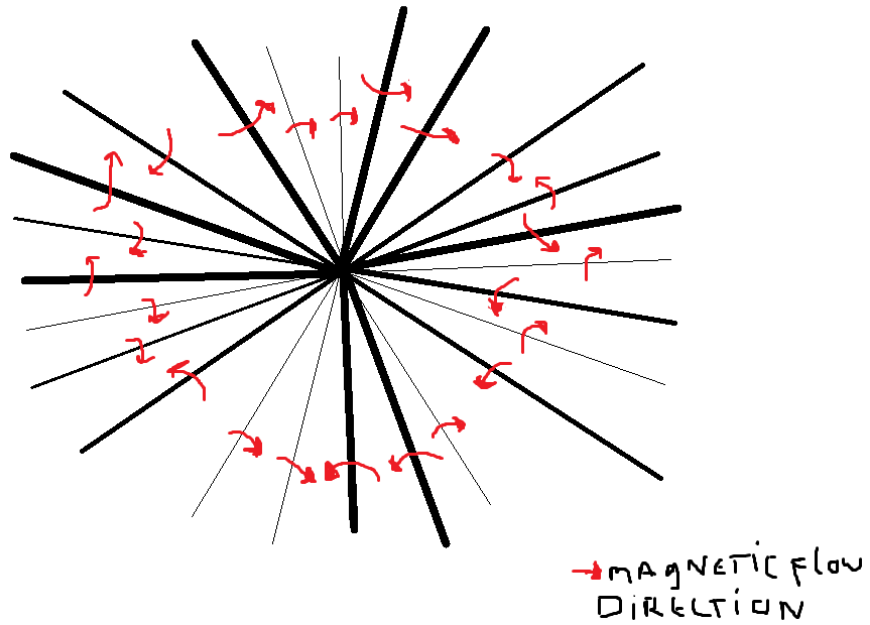


Figure 7. An attempt of a 3D model of a neutron. It is the direction of magnetic flow that attracts and repels all vortices in an evenly distributed manner.

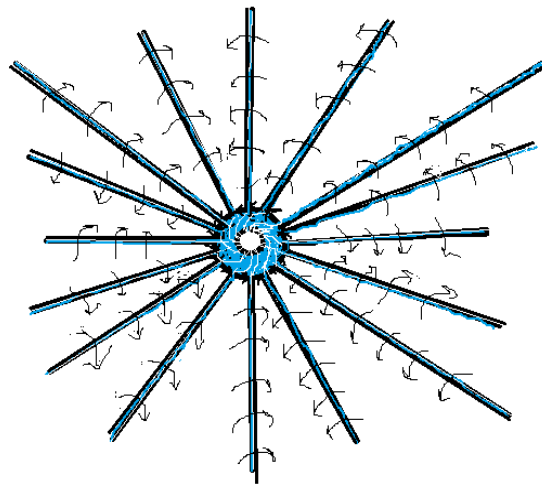


Figure 8 .An attempt of a 3 D model of a proton. electric object has formed a proton and because it moves circular (magnetic) it has created a vacuum core.

It is within the `electric shell` (the blue color) that new neutrons can be enveloped.

It is the organization of vacuum inside the atom (and the circular magnetic flows associated with this vacuum) that determine the waves the atom can produce.

White light explained vs green light. In white light the atom pushes in all waves that can be seen in the visual spectrum in green light the contraction of the atom only covers the push that you get for green light. It is the way how an atom contracts that determines the amplitude. In gamma radiation this contraction is huge. (High energy)

Why the forms of contraction?

White light.

Entering flow through electric bonds. When electric object flow through bonds and get a push from behind they sometimes enter an area with higher resistance like a tungsten wire in a light bulb. The only way out for this object is through the exiting vortices. What happens with white light is that while the atom is contracting there is also a big inflow through the bonds. This explains why there is not 1 wave of a certain length but a whole variety of waves inside the exiting vortices.

Laser.

Entering flow through vortices. When electric object flows through the vortices entering the atom structure in a certain way it can contract an atom to a certain length this causes a single colour.

Chemical laser.

If an element reacts with another element the bonding that occurs is between 2 distinct elements with a distinct shape. Electric bonding causes a shape change of the atom as the newly formed flow is shared through the bonds. The excess of object is released via the exiting vortices. Because the contraction of the atom is identical in all reactions the length of the contraction does not vary.

The result is a single colour.

Sonoluminescence.

Mechanical waves can keep an object where it is there is no flow out and there can be a push in. This can give a huge rise in temperature close to the air bubble in the fluid. If the bubble collapses cavitation this produces a push on exiting vortices as a bright white flash. How mechanical waves interact on solid material can also be seen in thermonuclear weaponry. Acoustic levitation is also a form of mechanical waves holding an object like a water droplet trapped but in acoustic levitation it is the object air in which mechanical waves are produced. In sonoluminescence these waves are produced in the liquid. Electric object in air is blocked in flow so it will not be pushed in as it does in water.

The constant of light speed.

Seeing lightspeed as a change of the vortex structure also explains why the speed of light is not a constant. In ELF Extreme low frequency waves the signal travels SLOWER than light under normal conditions. Remember ELF means fast speed of the object traveling through the vortex. Small area to flow through. The adaption of the circular flow is more difficult to establish when speed of objects is increased.

Time.

An atom moves in vortex theory as flow. The position of an atom is determined via all intersecting vortices involved.

If an atom moves all pressure grooves have to realign themselves. Because object involved is non-compressible all positions of original object is located accordingly. This means basically if one atom moves all other stuff moves as well. If everything positions itself to a new location we deal with the concept called time. This is the speed of repositioning.

Position of atoms.

Movement of atoms.

If someone comes at you and says atoms don't move at all it looks extremely strange but rationalizing in flow there is a different aspect to it.

An atom is a position within the vortex of light. Although its size is huge in comparison to the extremely small vortex. Atoms actually move through it. The magnetic circular flow of the position they came from is however still present it just gets deflated and inflated at a new location. With all the vacuum associated with the atom and circular magnetic flow increased. Because atoms move through vortices it is even theoretically possible to walk through a wall. As the wall is not associated by the vortices you go through. But it would take a lot of knowledge on the magnetic flows involved otherwise you can get stuck in the object wall.

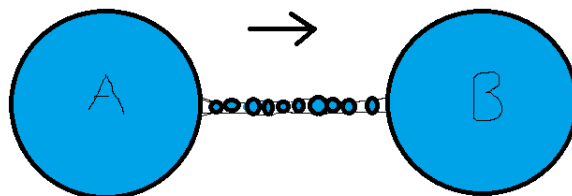


Figure 9. Atom moving from position A to position B.