

# **Democratic Free Will in the instant Entangled Multiverse.**

Author: Leo Vuyk.  
Rotterdam the Netherlands.

## **Abstract.**

Benjamin Libet measured the so called electric Readiness Potential (RP) time to perform a volitional act, in the brains of his students and the time of conscious awareness (TCA) of that act, which appeared to come 500 m.sec behind the RP.

The “volitional act” was in principle based on the free choice to press an electric bell button. The results of this experiment gives still an ongoing debate in the broad layers of the scientific community, because the results are still (also in recent experiments) in firm contrast with the expected idea of Free Will and causality.

However I would propose the absurd but constructive possibility that we are not alone for decision making in a multiverse as an individual person.

Even Max Tegmark suggested already about the multiverse: “Is there a copy of you reading this article?”

We could be instant entangled with at least one instant entangled anti-copy person living inside a Charge and Parity symmetric copy Universe. In that case we could construct a causal explanation for Libet’s strange results.

New statistical difference research on RPI and RPII of repeated Libet experiments described here could support these ideas.

Wikipedia says: “Democracy is a form of government in which all eligible citizens participate equally”.

Free will in a multiverse seems to be based on: all entangled copy persons living in all CP symmetric copy universes, have the same possibility to Veto an act and participate equally.

## Introduction.

The best introduction I can present here is made by Patrick Haggard made in: (ref. 42).

[PH]:

“Perhaps the most interesting scientific attempt to break out of this impasse comes from the experiment of Libet *et al.* (1983). Before describing the experiment in detail, I [PH] would like to single out two reasons why I believe it has been so important.

Libet was the first to attempt a scientific psychophysiology of free will.

His experiment brought scientific method to a question that had previously been purely philosophical. Using this method, he produced data that support the traditional neuroscience view, and deeply undermine the concept of conscious free will: preparatory brain activity causes our conscious intentions.

The second outstanding feature of Libet’s study is the insight that we may have a conscious veto over the acts our brain has previously unconsciously prepared (so called ‘free won’t’), even if we lack conscious free will.

This brilliant revision of the traditional concept of free will saves most of its desirable corollaries, such as individual liberty and moral responsibility, while maintaining compatibility with modern neuroscience.

I will next briefly summarize the experiment which brought Libet to these conclusions, and will then introduce the controversy over selection.”

The conclusion of Haggard (ref 1: Conscious Intention and Brain Activity) is described as:

“This exchange ( with B. Libet) has highlighted for me [P. Hahhard] two outstanding issues, which any future neuroscience of free will should address.

The first issue is largely philosophical, and amounts to what is chosen in voluntary action. While will (generation of action) and choice (selection of action) are conceptually distinct, this exchange has reminded me that neuroscientists often handle them together.

The philosophical concept of willing implies a single event, a single moment in time, where the mind initiates the brain and body processes which culminate in action.

The neuroscience concept that both Libet and I work with is of a continuous set of neural and informational processes, extending over at least 500 ms and often much more, in which the action is developed, elaborated and specified by the brain. Libet’s approach seems to be to identify a moment of willing, and a moment of conscious awareness, and to draw inferences from the time gap between them.

My own approach has focussed more on the hierarchical series of choices that culminate in voluntary actions, rather than on the moment of initiation or willing which begins that series of choices.

But perhaps choice is as important as will in understanding the conscious experience of action.

Two examples of choice are the specification of how the action is to be translated into movement (Haggard and Eimer, 1999), and the choice to continue or to cancel an action whose brain preparation is already underway (Libet’s veto).

I believe that this exchange has clarified the relation between consciousness and choice, but the traditional question of the relation between consciousness and willing requires further work.

Conceptual analysis could help here: do the processes of willing and selection (choice) differ qualitatively? Is willing merely the first of a series of choices, namely the choice to begin the process of action rather than not to begin it?

Should consciousness of willing differ in any significant way from consciousness of selection?

What informational features of action choice influence the conscious awareness of the action chosen?

A second message I have drawn from this exchange is the problem of describing and classifying the brain process of action initiation.

The crux of this problem is that existing classifications are post hoc. We can find a difference in readiness potentials in our data, and we can then look for an explanation of it, but we cannot intervene on the processes of action initiation and see how RPs and conscious experience are altered in consequence.

Much of Libet's position hinges on the distinction between Type I and Type II Readiness Potentials. Even more hinges on the technical questions of how best to detect RP onsets. While the distinction between the two types in his data is very clear, *it is less clear what critical difference in mental activity leads to these different classes of brain activity.*"

**After this P. Haggard statement** I would focus on the last line because I suspect that this should lead to the solution.:

"it is less clear what critical difference in mental activity leads to these different classes of brain activity."

We would expect that based on causality the Time of Conscious Awareness (TCA) always comes before the electric RP, which is found to be present in our head because this would be the proof that we humans are equipped with the free will to press on the button at the moment WE are also conscious to do that!!!.

However, Libet (and later all other researchers) measured the opposite for most of the students. Only a few Libet students reported to have "preplanned their action" ( RPI) which is in my multiversal perspective a key issue to focus on.

### **The entangled multiverse solution:**

If we assume that we are living inside one of the 12 copy universes, (as is proposed in ref 2) which are each others observer by "mutual instant entanglement" to trigger randomly and alternating the collapse of the copy wavefunctions inside all universes, (thus also to trigger a volitional act, like Libet's subjects) in the other 11 universes.

Then as a consequence, we may expect that only a small part of the students will report to have had the conscious intention to act earlier.

Thus in the case of 12 entangled universes we may expect that 1/12 part or 8,3 % of all (human) timing of conscious intention to act, will show a reversed timing sequence between the so called Time of conscious awareness (TCA) which will come before the electric Readiness Potential (RP).

Indications of those percentages, are already found by Judy Trevena and Jeff Miller (Otago university NZ). See:

[http://www.ncbi.nlm.nih.gov/entrez/query.fcgi?cmd=Retrieve&db=PubMed&list\\_uids=12191935&dopt=Abs](http://www.ncbi.nlm.nih.gov/entrez/query.fcgi?cmd=Retrieve&db=PubMed&list_uids=12191935&dopt=Abs)

The Benjamin Libet percentage results of pre-planning (RPI) are very poor quantified in his and later experiments.

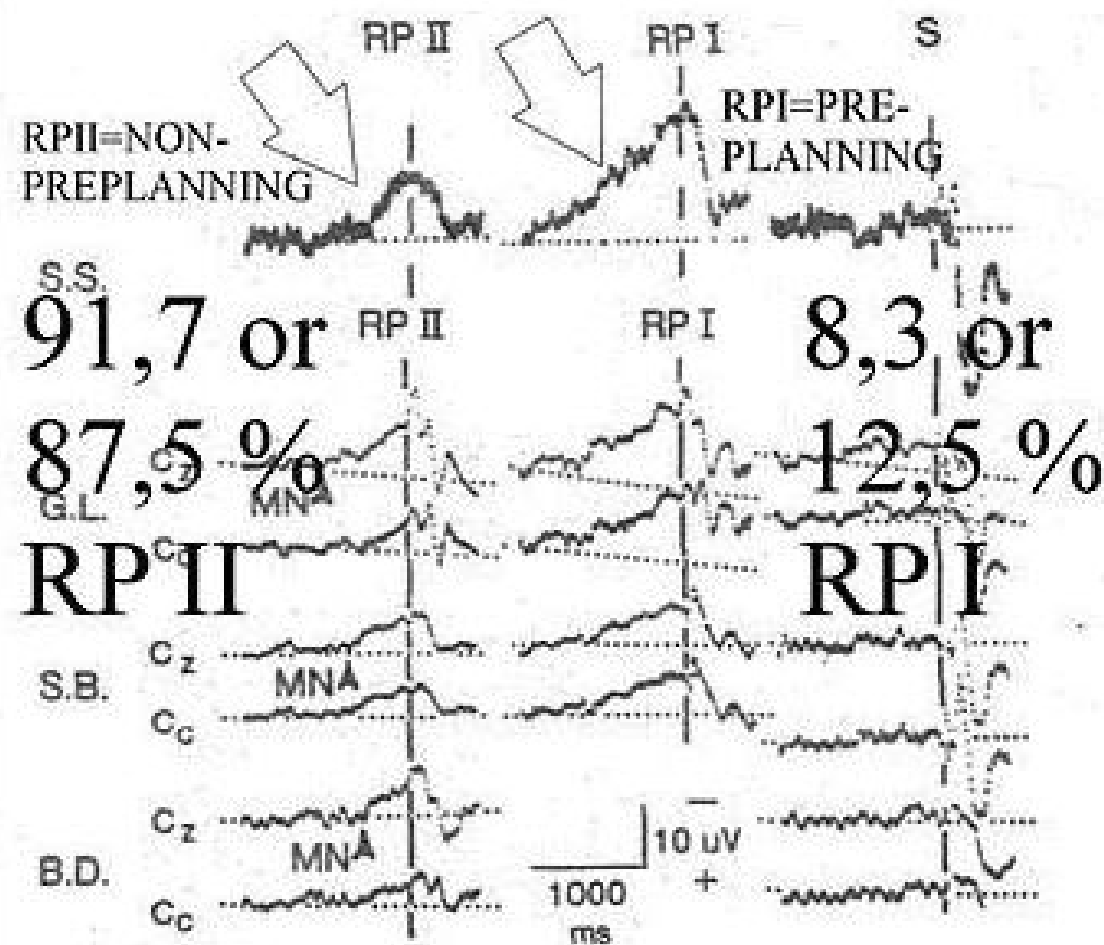
Libet wrote to me in private, that these numbers where "buried" inside his files and therefore, he was not able to produce them.

In my view this is a good reason to do it again with more precision on the readiness potential percentage differences between RPI and RPII. If humans are entangled cooperating decision makers inside the postulated 8 or 12 entangled but separated universes, then for every decision we need always only one preplanning test-person who pre-plans his choice. The other 7 or 11 test copy-persons are only able to follow OR VETO this decision.

If humans are cooperating decision makers inside the postulated 8 or 12 entangled but separated universes, then for every decision we need one preplanning test-person who pre-plans his choice. The other 7 or 11 test copy-persons are only able to follow **OR REJECT** this decision.

As a result we may be able to measure (in the future) the number of copy universes involved, by counting the average percentages of preplanning persons in test situation like the Libet test..

For 12 universes the RPI percentage will be  $100/12=8,3\%$ . For 8 universes RPI will be  $12,5\%$ . For RPII it will be  $91,7$  respectively  $87,5\%$ .



Electric Readiness Potential (RP) Test results made by B.Libet, listed for test persons (4x) and for the test person's ideas about preplanning before making the decision to press the bel.

RPI is without preplanning, RPII is with preplanning!

Figure: 1, the adapted Libet results.

Readiness Potential I (RPI) is called “loose preplanning” The subjects reported to have had “some feeling of preplanning” in SOME of the trials!

How much was NOT known and buried in the files of Libet, he wrote. Why Libet shifted the RPI and II positions of the 4 subjects is not known (L.Vuyk)

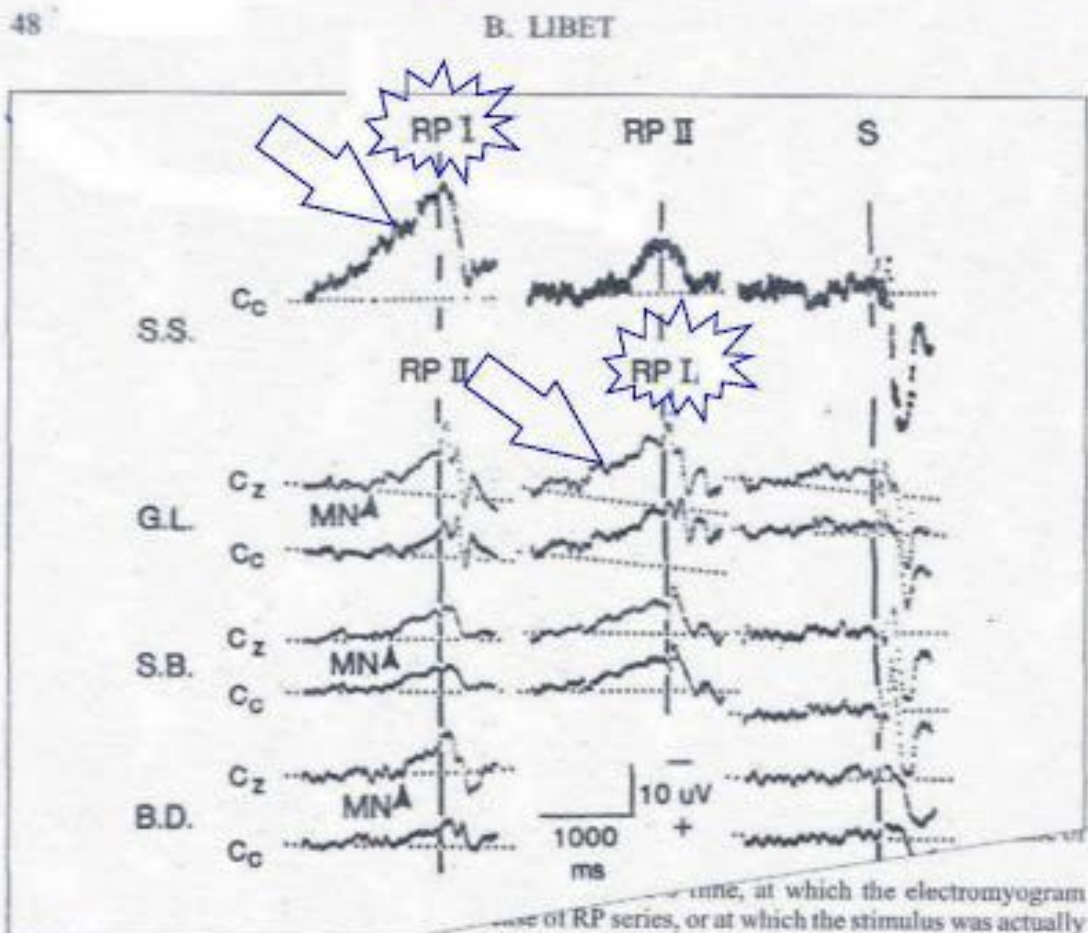


Figure 1. The dashed horizontal line represents the DC baseline drift. In this series, the first RP (type I) was recorded before the instruction 'to let the urge come on Readiness Potential I (RPI) spontaneously' was introduced; the second RP (type II) was obtained after giving this instruction in the same session as the first. For subjects G.L., S.B. and B.D., this instruction was given at the start of all sessions. Nevertheless, each of these subjects reported some experiences of loose preplanning in some of the 40-trial series; those series exhibited type I RPs rather than type II. Note that the slow negative shift in scalp potential that precedes EMGs of self-initiated acts (RP) does not precede the skin stimulus in S series. However, evoked potentials following the stimulus are seen regularly to exhibit a large positive component with a peak close to +300 ms. (arrow indicates this time); this P300 event-related potential had been shown by others to be associated with decisions about uncertain events (in this case, the time of the randomly delivered stimulus), and it also indicates that the subject is attending well to the experimental conditions.

Figure: 2, the original Libet results.

## Conclusion,

In an entangled multiverse, the base for Free Will could be the possibility to VETO an act or decision. (as Libet also suggested)

The intention or preplanning for a decision or an act seems in fact to be less important.

As a result we may be able to measure (in the future) the number of copy universes involved, by counting the average percentages of preplanning persons in test situation like the Libet test. For 12 universes the RPI percentage will be  $100/12=8,3\%$ . For 8 universes RP I will be 12,5% For RP II it will be 91,7 respectively 87,5%

## Some related thoughts.

Max Tegmark: Is there a copy of you reading this article?

Two independent research results of Tegmark and Cramer combined, are painting a new entangled multiverse picture the CPT symmetric Multiverse, in the form of a set of symmetric ordered bubbles like a giant Raspberry.

Open letter to Max Tegmark and John G. Cramer ,

Dear Max Tegmark and John G. Cramer,

It is with some hesitation but I am still convinced that you both scientists seem to be connected to each other by "Universal entanglement" (a derivate of John Cramer's Transactional interpretation : (TI) ) See:

[http://www.npl.washington.edu/npl/int\\_rep/ti\\_over/ti\\_over.html](http://www.npl.washington.edu/npl/int_rep/ti_over/ti_over.html)

At the same time it seems to be possible to keep the copy-multiverse proposed by Max Tegmark intact, without the need for splitting off new universes. (as Max still seems to advocate.)

Max wrote: Is there a copy of you reading this article? A person who is not you but who lives on a planet called Earth, with misty mountains, fertile fields and sprawling cities, in a solar system with eight other planets?

The life of this person has been identical to yours in every respect. But perhaps he or she now decides to put down this article without finishing it, while you read on. The idea of such an alter ego seems strange and implausible, but it looks as if we will just have to live with it, because it is supported by astronomical observations.

See:<http://space.mit.edu/home/tegmark/>

How?

If we assume that Max is right about copy Universes and these Universes are entangled down to the Planck scale, then we could - without any QM hesitation- assume that these Anti-Mirror Copy universes form together a Quantum Mechanical "Closed System" in the pure meaning of Classical Quantum Mechanics.

They are each others non-local ( distant ) "observer" and anti-mirror "observed subjects" with opposite running time.

However as a small addition, we have to assume that "anti-copy events" in both universes, are subtle and random phase shifted in time to realize the at random choice between who is the observer and who is the observed subject.



It also looks a real opportunity to say more about how Consciousness is working in the same "entangled" way.

Best regards, Leo Vuyk.

### **Some interesting indications for democratic free will: Trevena and Miller and Benjamin Libet's Readiness Potential.**

Benjamin Libet measured the so called electric Readiness Potential (RP) time to perform a volitional act, in the brains of his students and the time of conscious awareness (TCA) of that act, which appeared to come 500 m.sec behind the RP.

However, if we assume that the postulated 12 copy universes are each others observer to trigger randomly and alternating the collapse of the copy wavefunctions, (to trigger a volitional act, like Libet's subjects) in the other 11 universes.

Then as a consequence, we may expect that only 1/12 part or 8,3 % of all (human) timing of conscious intention to act, will show a reversed timing sequence between the so called Time of conscious awareness (TCA) came before the Readiness Potential (RP). indications in that directions, are already found by Judy Trevena and Jeff Miller (Otago university NZ).

See: [http://www.ncbi.nlm.nih.gov/entrez/query.fcgi?cmd=Retrieve&db=PubMed&list\\_uids=12191935&dopt=Abs](http://www.ncbi.nlm.nih.gov/entrez/query.fcgi?cmd=Retrieve&db=PubMed&list_uids=12191935&dopt=Abs)

tract Trevena an Miller found surprisingly, that up to 20 % of all cases of human timings of Conscious intention to act, should be accounted as reversed in sequence thus: TCA before Lateral RP.

However, It was Stanley Klein, who described his reaction and the reaction of other professionals, that the 20% reversed timing cases, found by Trevena and Miller, should decrease, if more common measurement biases were accounted for. See: page 274:

<http://cornea.berkeley.edu/pubs/161.pdf>

Quotation of page 274 of the article by Stanley Klein:

"The new data of Trevena and Miller (2002) indicate that the average time of the LRP still precedes the TCA, but by much less than does the RP. However, Trevena and Miller argue that the averaging process can distort the story and that one needs to look at the percentage of times that the timing is reversed (TCA coming before the LRP).

They find that 20% of the time the TCA occurs before the LRP. Based on that finding it is likely (they say) that the conscious decision to act comes before the LRP.

A bias of 100 msec in the TCA could upset Trevena and Miller's argument since the 20% with TCA before LRP would decrease substantially. When the average TCA is shifted from 2200 ms to 2100 ms it is unlikely that there will be many occasions in which the LRP comes after the conscious decision to move.

I will go through the topic of bias carefully with special attention to the flash-lag effect (Nijhawan, 1994).

I argue that the forward referral of the flash-lag effect, not a backward referral that had been suggested for this purpose, can compensate for the perceptual delay latency."

As a consequence, If future experiments could be made more focused on this issue, then perhaps we could find more support for the hypothesis of such 12 fold trigger mechanisms to collapse every time a set of 11 fold copy wave-functions inside the other 11 fold entangled copy-universes.

Then we could find a firm foundation for human and material consciousness.

### **Thoughts about our intuition.**

#### **A Solar Toroidal Programmable ROM, (STP-ROM) combined with the Earth related collective Planetary consciousness.**

If the oscillating vacuum lattice really has complex features as is described in this paper, e.g. for the LASOF (Local Anti-Symmetrical Oscillating vacuum Frame), the directional memory for Quarks or Leptons and Photonic information etc. etc, then we may call this vacuum lattice a kind of universal quantum memory.

If in addition, each vacuum particle within the vacuum lattice has the possibility to act as a "Programmable Read Only Memory" (STP-ROM) then the vacuum has huge and awful memory abilities with a base for even paranormal (ESP) effects..

It is an interesting step to combine the idea of Frank Tipler, that all information created in our universe will always be indestructible memorized, with Rupert Sheldrake's idea of "Morphic Fields" and Teilhard de Chardin's Noosphere.

Then it is only a small step to speculate that the Earth -as a whole- is imprinting its changing existence including all people and all people's thoughts, into the Solar related Oscillating Quantum Vacuum (OQV) lattice, on each single Planck time.

At the same time this Solar OQV should be interpreted as an awful 3-dimensional ever growing STP-ROM without delete options. The Solar STP-ROM is supposed to have physical existence in the form of a huge Toroidal 3-D volume within the OQV representing the orbit of the Earth around the sun in one year.

If we assume, that people and animals, thus even all animate matter are "connected" to this STP-ROM, then it could be the origin for all our dreams and creative intentions an intuition. It could function as a so called "Intuition Pump" mentioned before by Daniel Dennet.

Together with Big Bang Entanglement (BBE), we could even introduce the ability to have telepathic communication as described by R. Sheldrake via non-local instantaneous entanglement what he called "Morphic Fields and Morphic Resonance". (see [5], page 36). If the Solar Toroidal vacuum STP-ROM does not rotate with respect to the Galaxy, then even astrological ideas could become physical reality.

### **The Human Character and the Selection Mechanism on his own Solar Toroidal STP-ROM track.**

If we interpret the Solar STP-ROM as a growing data base of the Earth, memorizing all human ideas and actions of the past, and is supposed to be the origin of our creative intuition and dreams, then there must be something like a Solar STP-ROM selection mechanism for each single person. Each person should be continuously connected with only a reduced set of "STP-ROM Tracks" out of the huge information chaos of the Solar Toroidal STP-ROM. By the orbit of the Earth through the Solar Toroidal STP-ROM, the intuitive information stream is supposed to have a continuous character.

It is well known that humans suddenly are able to change Character, or show a variable Character. This could be explained by an instability of his Solar Toroidal STP-ROM Track selection mechanism.

Speculations about The Human Trinity of Soul, Spirit and Mind.

Soul or Human Character. As a consequence of the postulated Solar Toroidal Programmable STP-ROM memory and the human selection mechanism, it is suggested that each human has its own more or less stable character (also called: soul), which is assumed to be based on continuous interaction with this Solar STP-ROM Selection Mechanism and is based on personal DNA profile



related chemical influences.

Spirit or Human intelligence (and learning abilities) is supposed to be based on his DNA profile and physical functioning of the brain.

Mind or Human Self-awareness (Consciousness) is supposed to be the ability to make more or less balanced choices between the dual choice solution input, given by his character and his intelligence. As a consequence, humans are supposed to be a Trinity of: Soul Spirit and Mind, or: Character, Intelligence and Self-awareness.

The more Mind/Self-awareness a human has evolved, the more he is supposed to be able to be aware of the differences between the input of his Soul/Character and the input of his Spirit/Intelligence, the more he is able to make balanced decisions and to be responsible for his actions, the more he is able to realize his modest Free Will.

Telepathy and ESP (Extra Sensory Perception) by a Distant STP-ROM Selection.

An enormous number of Telepathy examples are present in the literature between Humans, between Animals and between Humans and Animals. Rupert Sheldrake invented the "Morphic field" and the "Morphic Resonance" and concentrated on human/animal-connected telepathy in his book: "Dogs That Know When Their Owners Are Coming Home" (Hutchinson, 1999). Items of his book are: Picking up intentions, distant recognition of deaths and accidents, telepathic calls and commands, animal migrations and memory, Pets finding their people far away, Pigeons finding their pen-house with offspring far away even if this pen-house is changing its location on a ship. See also Nobel Prize winner Brian Josephson (2003) about ESP: <http://arxiv.org/html/physics/0312012/>

If all human and animal thoughts and actions on Earth are stored at specific locations within the awful memory capacity of the local vacuum as described before, then it is only a small jump to postulate that animals and humans can have local telepathic experiences by an extended so called "STP-ROM Track Selection" (SRTS) mechanism" mentioned before. However it is hard to explain how it is possible to bridge large distances, as is claimed by R. Sheldrake.

Based on the "extended" STP-ROM Track Selection Mechanism, it is obvious that Humans and Animals who are in each others neighborhood should be able to make contact with the local vacuum framed STP-ROM to communicate.

For animals this would solve the problem of how birds are able to navigate in huge swarms, and how Ants are able to organize their community etc.

To solve the large distance telepathic phenomenon however, we are forced to postulate, that a kind of EPR or Big Bang Entanglement (BBE) communication is possible not only between copy quantum mechanical systems living in different universes, but also between different humans or animals on Earth by distant vacuum based STP-ROM selection. Rupert Sheldrake's solution of "Morphic Resonance" could then be called "Distant STP-ROM Track Selection" (D-SRTS). It is assumed, that items like "Remote Viewing", and "Extra Sensory Perception" (ESP) are based on the same footing as Telepathy. However, in "Distant STP-ROM Selection" there is no base for explanation of "Future Precognitive Clairvoyance", unless the concept of Free Will is restricted which we did before.

## **Reduced Free Will by STP- ROM, and Precognitive Clairvoyance.**

If all our intentions and urges are directly or indirectly originated by "reading" our STP-ROM track, written and digital filed inside the vacuum particles around us or far away, then Free Will is at least reduced.

Then Free will is reduce to the guiding ability of making balanced (egoistic or altruistic) choices

YES or NO , between STP-ROM track input alternatives. Then all our intentions and urges and even our creative ideas are predetermined, but we are still able to VETO these ideas and wait for an predetermined alternative idea.

Consequently our human intelligent reasoning, is a process which is based on the VETO or PASS process within 200 milliseconds of the autonomous predetermined ideas, urges and intentions. If we take only the most appealing fraction serious of reports of precognitive clairvoyance in the literature, we can not deny that some Animals and Humans represent more or less the skill for Precognitive Clairvoyance of their own individual future but also from others. If we accept that animals and humans have more or less the skill for Precognition by "Distant STP-ROM track selection", not belonging to their " own" track but belonging to other individuals, or animals, then this mechanism may work as a direct input for Precognitive Clairvoyance. However, the future is still not fixed by these phenomena because each person may be thought to be able to change his characteristic balance in egoistic or altruistic choice processing by vetoing or pass these predetermined urges and intentions.

### **If the Future is partly defined by the Past, we “remember the Future”.**

The Future must be mainly defined by the Past if the so called "Solar Toroidal Programmable ROM" STP-ROM, thought to be present around the Sun, can be read out as is suggested before and is supposed to be our main input of our intentions and urges (creative “Intuition Pump”). It is also assumed before as a possibility to explain Telepathy and Precognitive Clairvoyance. However if we stick to this model, and all our private intentions and urges, thus all our creative ideas, are created by reading our personal STP-ROM vacuum memory "track", which is at the same time assumed to file all our private thoughts and actions, then it is clear that the future is mainly created by the past. Mainly because our personal Free Choice between egoistic and altruistic choice solutions may vary within small boundaries.

Then A second proposal can be made, that not all our memory need to be filed in our brains, but also in our personal STP-ROM Track, circling around the Sun as large as the orbit of the earth, as my personal spiral track, for my creative input memory.

It could be an interesting future experiment, to file our personal intentions and urges throughout the year and compare our new intentions and urges the following year in a day to day sequence. So we want to remember the future!

Astronauts lose dreams and “Intuition Pump” input outside the STP-ROM area.

As a consequence of the STP-ROM (Solar Toroidal Programmable ROM) concept, Astronauts should have loss of dreams, and intuition pump input, in space if they move outside the STP-ROM Toroidal area.

At the same time it must be assumed that the STP-ROM area probably will expand in time into the direction of the sun, because the oscillating vacuum frame is "eaten" by the solar sunspots, so the vacuum and consequently the STP-ROM, is slowly moving into the direction of the sun.

The solar sunspots are supposed to be small black holes, constantly "eating" the vacuum. So called Stellar Anchor Black Holes (SABHs), located on both sides of the sun (supposed distance = 0,5-1 light year), will have a slight expansion effect on the vacuum and thus also on the STP-ROM Toroidal shape.

As a consequence, an astronaut moving in space between the Earth and the sun will dream about more historical items than he will dream on earth. An astronaut moving at the opposite side of the Earth, will not dream at all.

## Goals of intelligent Life.

If we combine these different thoughts about Nature and our existence on Earth, it seems that the first goal of life in our dual universes could be described as: the creation of human Love and Hatred, peace and aggression, together with moral awareness by transactional free will, based on human retarded EPR correlation between dual copy universes.

As a result it is assumed that two kinds of communities are possible. This can be a social- or non-social community, respectively based on human cooperation or human repression by the few.

The second goal of life seems to be the creation, extension and storage of a "Cosmic collective Earth connected Planetary Vacuum Memory" which is coined: STP-ROM (Solar Toroidal Programmable Read Only Memory).

## Is Less More in the Symmetric Multiverse? and a new paradigm for Free Will

The Aphorisms: "Less Is More" and "Form Follows Function", of Modern Architecture, introduced by Mies van der Rohe respectively Louis Sullivan, seem to be REVERSIBLE in Nature.

Why, because at the Planck scale, the SHAPE of particles and the way they are connected to each other and form compound quarks, seem to be the origin of the particle FUNCTION.

See: Rigid Elementary Click-On Particles, Propellers and monopole based Fields [Ref. 4]

As a result we may say: FUNCTION FOLLOWS FORM in particle physics.

At the Universal scale, CPT ( Charge, Parity and Time) SYMMETRY between entangled copy Multiverses with Raspberry geometry, seems the most logical solution for a theory of everything.

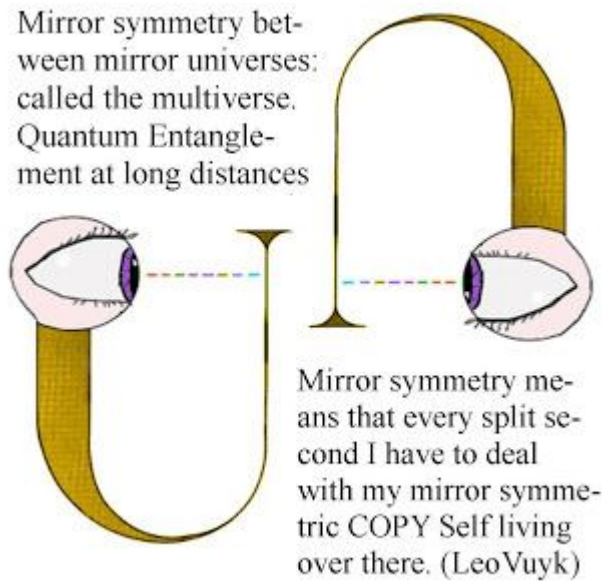
The cyclic CPT Symmetric Raspberry Multiverse, fractal based by black hole evaporation. [Ref. 33]

As a result we may say: MORE IS BETTER in Astronomy and Consciousness. ( to solve the "Symmetry"- and "Schrödinger's Cat" problem).See:

As a consequences, we should not be afraid for Ocham's razor who ordered to keep it simple as possible at the Planck- or Universal scale and applied to consciousness.

In fact my entangled symmetry follows Ocham's razor by keeping the choice system in nature simple. If we have a system of entangled symmetric copy universes, then I expect that by a sort of floatation of entanglement by chance, one of the copy observers is the first to suggest a specific choice (and become the subject) about 300 msec later the other observers are able to pass or veto the choice.

I would call this: time-like entanglement between positive and negative energy parts of the zero energy state of dual COPY (anti-) matter universes together forming a so called "closed system": the zero energy multiverse. Why zero energy?



**Fig.3 Entangled Consciousness in the Entangled Multiverse**

### **Ervin Laszlo's Akashic field.**

Ervin Laszlo's Akashic Field Theory is in harmony with the symmetric mirror multiverse.

The only difference is, that my mirror universes are really mirror universes also in spin or chirality.

As a consequence there are material- and mirror anti-material universes.

(the next text is taken from from Wikipedia)

His 2004 book, *Science and the Akashic Field: An Integral Theory of Everything* posits a field of information as the substance of the cosmos. Using the Sanskrit and Vedic term for "space", Akasha, he calls this information field the "Akashic field" or "A-field". He posits that the "quantum vacuum" (see Vacuum state) is the fundamental energy and information-carrying field that informs not just the current universe, but all universes past and present (collectively, the "Metaverse").

László describes how such an informational field can explain why our universe appears to be fine-tuned as to form galaxies and conscious life forms; and why evolution is an informed, not random, process. He believes that the hypothesis solves several problems that emerge from quantum physics, especially nonlocality and quantum entanglement.

"There is a form and level of coherence in the various domains of observation and experience that involves a quasi-instant transmission of information across space and time...I present evidence that "nonlocal coherence" is widespread in nature, occurring in the macrodomain of the universe, in the microdomain of the quantum, as well as in the mesodomain of life... I show that (i) phenomena of nonlocal coherence are logically interpreted as the transmission of a non-conventional yet physically effective form of information termed "in-formation"; (ii) this transmission is the effect of a universal field in nature; and (iii) the universal in-formation field is the scientifically identifiable functional equivalent of the fundamental metaphysical element known in Sanskrit and Hindu metaphysics as Akasha."

### Macroshift Theory

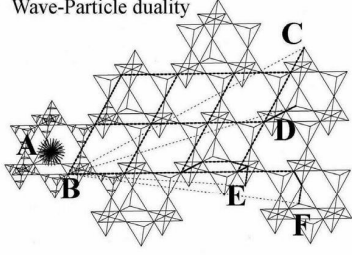
László stated in his book *You Can Change the World* that there is global choice for coming world crisis. One that can come in the form of a global breakdown centered on increasing fragmentation of economic inequality and a new arms race from rising powers. The other choice would be a global breakthrough led by international organizations. This would be by the linking of non-government organizations promoting sustainable development link using the internet.[4]

A Macroshift is defined as a popular movement to turn the tide from a global breakdown to a global breakthrough. László sees the years 2012-2020 as a critical period to change the course as the coming crisis is taking shape in geopolitical current.

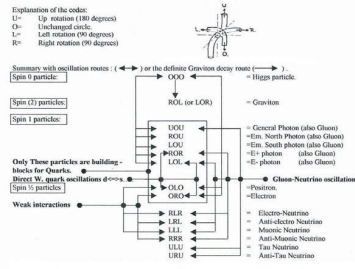


# What is wrong with Physics

## Wave-Particle duality

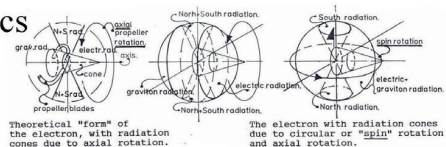


**Photon trajectories through the tetrahedral Chiral vacuum lattice.**  
 A photon is created as a deformed Higgs particle at position (A), thus as a single (Photon/Gluon) particle which after some distance changes form back into a Higgs particle (B).  
 The photon energy is transferred into the oscillating Higgs system and travelling through the vacuum lattice in the form of a pulsating BUNCH of entangled energetic Higgs oscillations with the local speed of light. The distance between two cycles of the Bunch resembles the wavelength of the photon pulsating bunch.  
 After collision with a second Fermion, at locations C,D,E,F, the BUNCH of energy collapses and change the FORM of a local Higgs particle into the shape of the original Photon.  
 Five different shaped Gliaons after some distance are called Photons.  
 Thus five different shaped Photons start their journey as Gliaon. Author: Leo Vuyk.



Author: Leo Vuyk 30-01-2011 NL

Figure: 4 Poster quantum FFF Theory.



The "Eigen energy" distribution around the spinning Fermion propeller, is supposed to come in cone form. The Fermion spin and radiation is the product of a scattering process with oscillating Higgs vacuum particles. As a result, the Fermion has a double spin around two polar axes. This is supposed to be the origin of a dipole Magnetic field with North and South monopole photon radiation and the circular distribution of graviton and electric radiation. In addition it must be stated that all Fermions are entangled with their object/subject particle far away.

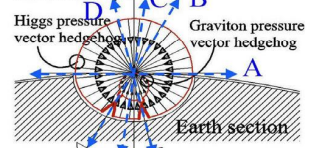
Leo Vuyk@Gmail.com <http://bigbang-entanglement.blogspot.com/>

# At the Quantum level



## Double LeSage Quantum Gravity.

Higgs/Graviton pressure vector hedgehogs acting on a mass carrying Quantum particle. The irregular distribution of mass inside the earth is supposed to influence the 3D pressure vector hedgehog according to the new Double LeSage gravity paradigm, see image below.  
 Author Leo Vuyk



Locations inside the Earth, with extreme high mass concentration, (near Volcanoes) measured by inertia pendulum experiment.

Oscillation directions A,B,C,D, of the NEW Inertia Oscillator device, will give larger DAMPING differences as expected by Newtonian gravity rules

**Two accelerating, pairing and receding micro black holes in the Carina nebula with temporary meeting place A.**

**Two accelerating, pairing and receding micro black holes in the Carina nebula with temporary meeting place A. and ionised H2 gas trail.**

**Examples of dumbbell Galaxy formation between two giant Galaxy Anchor Black Holes (GABHs).**

**The origin of Elliptical Galaxies and complex external Dark Matter lobes, by merging of "early" spiral galaxies, each equipped with two Galaxy anchor black holes (GABHs) located on each side of the equatorial plane of the spiral.**

**From left to right, the spiral structure will fade away during the process, only some bars seem to be able to last over the original merger. Consequently, the Lenticular galaxy can be interpreted as an intermediate galaxy form. Author: Leo Vuyk**

**The origin of Elliptical Galaxies and complex external Dark Matter lobes, by merging of "early" spiral galaxies, each equipped with two Galaxy anchor black holes (GABHs) located on each side of the equatorial plane of the spiral.**

**Two accelerating, pairing and receding micro black holes, propelled by ionised intergalactic gas tail, as observed in the Carina Nebula. Eagle, Crab etc. creating BH-objects in the Carina Nebula.**

**The origin of Elliptical Galaxies and complex external Dark Matter lobes, by merging of "early" spiral galaxies, each equipped with two Galaxy anchor black holes (GABHs) located on each side of the equatorial plane of the spiral.**

Author: Leo Vuyk 4-02-2011 NL

Figure 5: Poster Q-FFF Theory.

# What is wrong with Physics at the astronomical scale?

**Ball lightning pushed by Plasma tail against the wind**

**Vapour trail washed out by the wind**

**The raspberry multiverse.**  
 The CPT symmetric raspberry universe seems to be the result of fractional shaped expansion, of the volume of a cyclic created big bang black hole, into egg shaped bubbles with individual Cosmic Microwave Background (CMB) Charge Parity Time.

**3-D Expansion through the raspberry multiverse, being void in the middle. The void in the middle is supposed to be filled by the rest of the fractal pattern, when the expansion of the CPT symmetric universe will no longer be a true general relativity type of expansion.**

**Hyperion's globular inner nucleus is a firm indication of entropy decreases at the boundary between Higgs repulsion and attraction zones (4) around NEW (micro) black holes.**

**7x Higgs quantum curves (2) are depicted for Fermion**

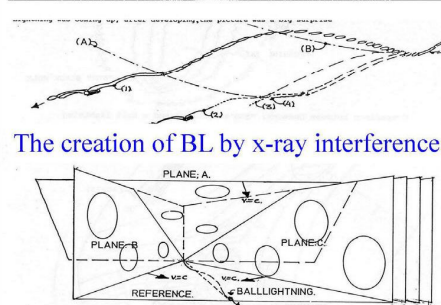
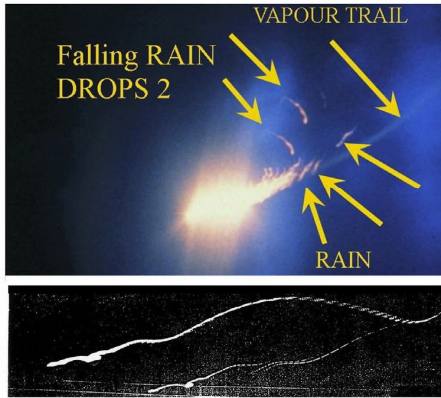
**WMAP CMB Background radiation bubble**  
 (egg shaped) of our own universe.

**Distant universes should provide evidence for the glaucous anti-symmetric formation of galaxy clusters without CMB shadows. In the central half of the glaucous hemisphere of galaxy clusters will share with a clear shadow in the CMB, because there are no galaxies located behind this part of the CMB. The angle which will be measured between lower frequency hemisphere will be an indication for our observer location in our own Universe. Author: Leo Vuyk**

Leo Vuyk@Gmail.com <http://bigbang-entanglement.blogspot.com/>



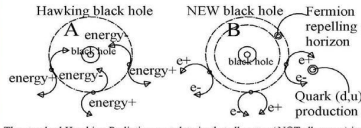
# THE SECRET OF BALL LIGHTNING. Its production by e.m.- x-ray interference into a KNOTTY Nucleus, able to accelerate, decrease Entropy and produce Vapour.



Author: Leo Vuyk 10-02-2011 NL.

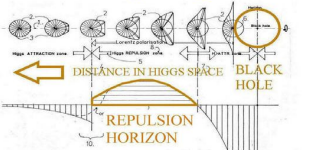
Figure 6, Poster Q-FFF Theory.

## The NEW Black Hole Paradigm



The standard Hawking Radiation postulate is: that all matter (NOT all energy) is drawn into the Black hole. My NEW postulate is that matter is even created (and pushed outside) at the Black hole horizon by QUANTUM FLUCTUATIONS producing Electrons and Positrons. The reason for this NEW Fermion production effect is, that it is a consequence of the concentration of head-on Higgs particle collisions just at the horizon. Some Electrons and Positrons will annihilate, but the rest will form Quarks and plasma, because the Higgs vacuum lattice is CHIRAL and prefer to link Gluons to Positrons and form U-Quarks in favour of Electrons and Gluons, which form D-Quarks. Thus more Electrons will stay single and form Hydrogen atom shells. However they have less mass than Quarks and feel less attraction to the Black hole nucleus, thus Electrons form also an external shell around the Black hole inner shell of Protons and some Neutrons! Due to the propeller shape of the particles all the plasma is repelled away from the black hole! The Black hole will not evaporate! This is the base for NEW Physics and a support for a new explanation of Cometary X-rays, Hydrogen and AMINO ACID production. Even Gas Pillar and Herbig Haro formations inside Nebula become a logic base. Author: Leo Vuyk.

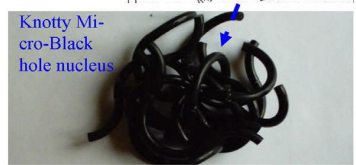
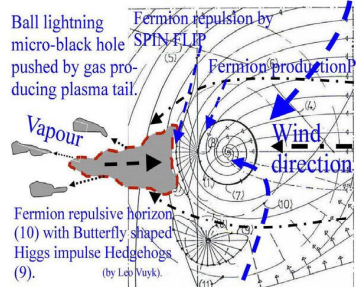
## The Fermion repelling horizon



7x Higgs quantum curves (2) are depicted for Fermions (3) with different distance to the BH horizon. At location (10) the spin of the fermions will flip due to the propeller shape of the Fermion and an opposing force away from the horizon is created by the Higgs vacuum itself down to location (7). The zone between (7) and (10)



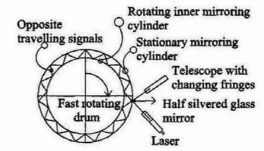
How is the vacuum able to release energy to overcome the opposing wind? By SPIN FLIP and the Plasma tail is always swept at the back of the BL by the wind itself!



Knotty Micro-Black hole nucleus

<http://bigbang-entanglement.blogspot.com/>

## LIGHTSPEED Extinction exp.



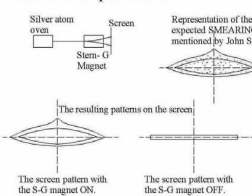
The Babcock and Bergman test done in 1964, resulted in a positive lightspeed drag factor of only 0,7%, which could be translated in a drag extinction effect over less than 1 cm distance after signal passage through the fast moving glass window. See: Journal of the Optical Society of America Vol. 54, nr 2 page 147-151 Febr. 1964. Determination of the Constancy of the speed of Light by Babcock and Bergman.

If the Quantum Mechanical Vacuum structure is influenced over maximal 1 cm. by matter, as the Experiment done by Babcock and Bergman seems to indicate, then a fast moving mirror cylinder inside a stationary cylinder should influence the interference pattern produced inside the telescope much more, than the Babcock and Bergman's experiment did. We should get better results, if the distance between the inner and outer mirror cylinder is minimized and the number of lightpath reflections is maximized.

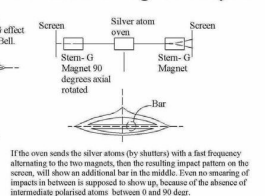
## Support for Atomic ENTANGLEMENT in single and DOUBLE Stern Gerlach experiments

New Stern Gerlach experiment, based on the hypothesis, that the non-smearing paradox described by J.S.Bell, in his book 'speakable and unspeakable in QM' Ch. 16, (page 140-141) is originated by a new unknown form of entanglement at a distance between the first silver atom inside the S-G magnet and the rest, waiting in the silver oven to be released. It is assumed, that the vaporized silveratoms inside and outside the silver oven, are always entangled two by two, to guarantee a total zero-spin state, and the absence of a "SMEARING" effect. author: Leo Vuyk, 23-10-2005

### The traditional Stern Gerlach experiment.



### The new proposed experiment, with two S-G magnets always ON



Author: Leo Vuyk 30-01-2011 NL

Figure 7 Poster Q-FFF Theory.

## Some FFF Theory related Experiments Function Follows Form in QM and Cosmo

### Repeating investigation of the CHAMP/GPS satellite anomalous outliers of 180 meter, in relation to the gravity-drag LASOF Ellipsoidal EXTINCTION influence on the lightspeed.

A clear example of GPS failure for sat-sat signals at higher altitudes ( CHAMP: 430 km, GPS: 20.000km) Kinematic orbit solution comparison showing GPS data outliers up to 180 meters, (2x) during a CHAMP flight long 24 hours with 15 earth revolutions in 2003.

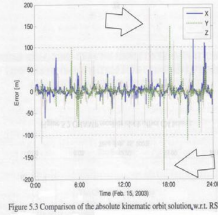
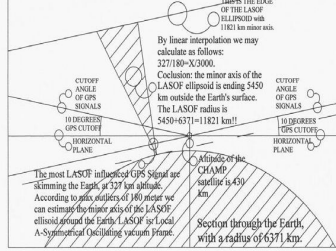


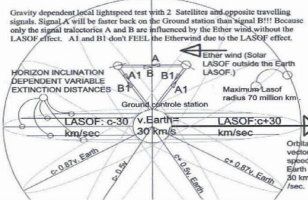
Figure 5.3 Comparison of the absolute kinematic orbit solution w.r.t. RSO.

Calculation of the MINOR AXIS (11821 km) of the LASOF ellipsoid based on CHAMP max outliers of 180 m. measured in 2003. author: Leo Vuyk.



### Opposite running LASER signal interference exp. in triangular shape between two Balloons or Satellites and the Earth.

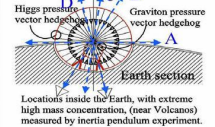
GRAVITY DIRECTION DEPENDENT LIGHT SPEED FRAME DRAGGING by LASOF (Local Anti-Symmetrical Oscillating vacuum Frame). SIGAR shaped LASOF Bubble structure of the Earth with proposals for a future two way TRIANGLE satellite signal interference experiment. date: 9-11-2006 ( this is an enlargement of figure B1 dated: 14-01-2005) author : Leo Vuyk.



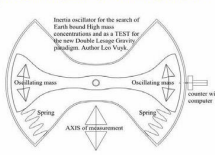
LeoVuyk@Gmail.com <http://bigbang-entanglement.blogspot.com/>

## DOUBLE LeSage Gravity

Higgs/Gravitation pressure vector hedgehogs acting on a mass carrying Quantum particle. The irregular distribution of mass inside the earth is supposed to influence the 3D pressure vector hedgehog according to the new Double LeSage gravity paradigm, see image below. Author: Leo Vuyk, 11-11-2005



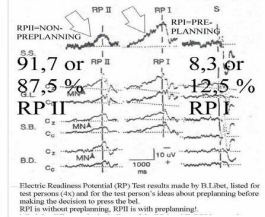
Locations inside the Earth, with extreme high mass concentration, (near Volcanos) measured by inertia pendulum experiment.



## MULTIVERSE exp. New B.Libet experiments focussed on RPI - RPII statistics.

If humans are cooperating decision makers inside the postulated 8 or 12 entangled but separated universes, then for every decision we must one preplanning test person who pre-plans the choice. The other 7 or 11 test copy-persons are only able to follow OR REJECT this decision.

As a result we may be able to measure (in the future) the number of COPY universes involved, by counting the average percentages of preplanning persons in the situation. The latter data will be: For 8 universes RPI will be 12,5% - For RPII it will be 91,7% respectively 87,5%.



Electric Resonance Potential (ERP) Test results made by D.E.H. based for test persons (A) and for the test person's ideas about preplanning before making the decision to press the red RPI is without preplanning. RPII is with preplanning!



## References.

- [44] Conscious Intention and Brain Activity  
Authors: Patrick Haggard and Benjamin Libet  
<http://13d.cs.colorado.edu/~ctg/classes/lib/cogsci/haggard.pdf>
- [43] The New GOD Particle and Free Will, Author Leo Vuyk, publ 2008. LuLu.com or Amazon.com
- [42] viXra:1312.0143 The Navel Cord Multiverse with Raspberry Shape.  
Authors: Leo Vuyk
- [41] viXra:1312.0076 Are Sunspots Made of Gravitating Dark Matter Black Holes?  
Authors: Leo Vuyk
- [40] viXra:1310.0101 The New Nuclear Magic Number (34) Explained by the Polar Coaxial Ring System of Quantum FFF Theory.  
Authors: Leo Vuyk
- [39] viXra:1310.0059 The Semi Relativistic Higgs Field Aether with Mass Related Lightspeed Adaptation.  
Authors: Leo Vuyk
- [38] viXra:1309.0081 New Physics by Table Top Experiments.  
Authors: Leo Vuyk
- [37] viXra:1308.0083 The Raspberry Shaped Super Symmetric Multiverse  
Authors: Leo Vuyk
- [36] viXra:1307.0068 Quantum Function Follows Form Theory, the Small Scale, Posters part 1.  
Authors: Leo Vuyk
- [35] viXra:1307.0067 Quantum Function Follows Form Theory, the Large Scale, Posters part 2.  
Authors: Leo Vuyk
- [34] viXra:1306.0218 Dark Matter UFO Dust Particles or Quantum Knots in the LHC at CERN ?  
Authors: Leo Vuyk
- [33] viXra:1306.0065 The Splitting Dark Matter- Black Hole- Big Bang and the Cyclic Multiverse.  
Authors: Leo Vuyk
- [32] viXra:1305.0140 Quantum FFF Theory Experiments, a Summary.  
Authors: Leo Vuyk

- [31] viXra:1305.0041 The Shnoll Effect Explained by Quantum FFF Theory.  
Authors: Leo Vuyk
- [30] viXra:1304.0022 The Self Organizing Universe in the Carina- and other Nebula.  
Authors: Leo Vuyk
- [29] viXra:1303.0211 Hubble Redshift Combined with Universal Contraction is Possible.  
Authors: Leo Vuyk
- [28] viXra:1303.0053 Micro Birkeland Currents Between Two RF Generated Plasma Balls in the Laboratory.  
Authors: Leo Vuyk
- [27] viXra:1302.0172 Silicon Based Ball Lightning Globule Structures and Signs for Accumulation and Retarded Decrease of Tunneling Energy Bullets.  
Authors: Leo Vuyk
- [26] viXra:1301.0088 Two or Three Large Quasar Groups (LQGs) Located at the Start of Two or Three Lyman Alpha Systems and a Part of the Raspberry Multiverse?  
Authors: Leo Vuyk
- [25] viXra:1301.0050 Dwarf Galaxies and Their Relation with Dark Matter Based Galaxy Anchor Black Holes (Gabhs).  
Authors: Leo Vuyk
- [24] viXra:1210.0177 Instant Broglie Bohm Pilot Waves, the Origin of All Entanglement Effects in the Lab and Wavefunction Collapses in Our Universe as Related to Our Opposing Anti-Copy Universe(s) According to Quantum FFF Theory.  
Authors: Leo Vuyk
- [23] viXra:1209.0092 New Dark Matter Black Holes and a New Dark Energy Higgs Field, Lead to a Bouncing CP Symmetrical Multiverse, and New Experiments.  
Authors: Leo Vuyk
- [22] viXra:1209.0061 Birkeland Currents, Sunspots, Comets and Ball Lightning Originated by New Paradigm Dark Matter Black Holes.  
Authors: Leo Vuyk
- [21] viXra:1209.0030 Majorana and Sterile Neutrino Solutions in the Quantum-FFF Model.  
Authors: Leo Vuyk
- [20] viXra:1208.0031 Clumpy Dark Matter Around Dwarf Galaxies a Support for an Alternative Black Hole Theory According to the Quantum Function Follows Form Model.  
Authors: Leo Vuyk
- [19] viXra:1202.0091 Earth Magnetic Monopole Array Field Interaction with Cyclotron – Synchrotron Electrons and Muon Conversion Used for Levitation Systems.  
Authors: Leo Vuyk
- [18] viXra:1201.0092 Earth Magnetic Monopole Array Field Interaction with Cyclotron Electrons used for Levitation Systems.  
Authors: Leo Vuyk
- [17] viXra:1112.0065 LHC Signals Between 121-130 Gev Interpreted with Quantum-FFF Theory  
Authors: Leo Vuyk
- [16] viXra:1111.0096 Reconciliation of QM and GR and the Need for a Pulsating Entangled CPT Symmetric Raspberry Shaped Multiverse.  
Authors: Leo Vuyk
- [15] viXra:1111.0061 Black Hole Horizon Curvature Dependent Balance Between Plasma Creation and e-e+ Annihilation in Quantum FFF Theory.  
Authors: Leo Vuyk

[14] viXra:1108.0036 Artificial Ball Lightning Production and Exploitation Device for Zero Point Electric Energy Usage.

Authors: Leo Vuyk

[13] viXra:1108.0006 Mass in Motion in Quantum FFF Theory.

Authors: Leo Vuyk

[12] viXra:1104.0083 Quantum FFF Theory in Posters.

Authors: Leo Vuyk

[11] viXra:1104.0044 Ball Lightning, Micro Comets, Sprite or Solar Fireballs and X-Ray/gamma Flashes According to Quantum FFF Theory.

Authors: Leo Vuyk

[10] viXra:1104.0002 Stellar Anchor Black Holes as the Remnants of Former Herbig Haro Objects

Authors: Leo Vuyk

[9] viXra:1103.0097 ZPE Zero Point Energy Examples Around Black Holes.

Authors: Leo Vuyk

[8] viXra:1103.0068 Funktion Follows Form, at the Quantum Scale and Beyond.

Authors: Leo Vuyk

[7] viXra:1103.0024 Quantum Gravity and Electro Magnetic Forces in FFF-Theory.

Authors: Leo Vuyk

[6] viXra:1103.0015

Wavefunction Collapse and Human Choice-Making Inside an Entangled Mirror Symmetrical Multiverse.

Authors: Leo Vuyk

[5] viXra:1103.0011 An Alternative Black Hole, Provided with Entropy Decrease and Plasma Creation

Authors: Leo Vuyk

[4] viXra:1103.0002 3 Dimensional String Based Alternative Particles Model

Authors: Leo Vuyk

[3] viXra:1102.0056 Experiments to Determine the Mass Related Lightspeed Extinction Volume

Authors: Leo Vuyk

[2] viXra:1102.0054 Atomic Nuclear Geometry Based on Magic Number Logic.

Authors: Leo Vuyk

[1] viXra:1102.0052 Construction Principles for Chiral "atoms of Spacetime Geometry

Authors: Leo Vuyk.

=====