

# **ER=EPR in the Supersymmetric Cyclic Multiverse and in the lab without strange Cats.**

Author: Leo Vuyk.  
Architect, Rotterdam,  
The Netherlands.

## **Abstract,**

In Quantum FFF Theory, it is postulated that the Einstein Rosen (ER) “bridging wormholes” between entangled particles are the guiding channels .for Einstein Podolski and Rosen (EPR) non local entanglement even at universal distances.

So; ER=EPR in the Multiverse and in the lab

My Supersymmetric Multiverse interpretation of quantum mechanics is based on the idea that NOT ALL POSSIBLE ALTERNATE HISTORIES of OUR **UNIVERSE** need to exist if there is instant mirror symmetrical wavefunction collapse in at least two distant (Charge and Parity) mirror symmetric universes.

So I postulate that ALL POSSIBLE ALTERNATE HISTORIES of OUR **MULTIVERSE** exist because there is instant mirror symmetrical wavefunction collapse in at least two distant (Charge and Parity) mirror symmetric universes.

So, then all alternate histories exist but have the same anti-copy result (inside different charged anti-copy universes).

Dual entangled Cats and anti-Cats in both universes, die or live instantly (superpositioned) without looking at them: they (the nuclear decay trigger) look to each other by long distant instant Quantum entanglement.

The Super symmetric Multiverse interpretation of quantum mechanics is also reason to introduce a different electric charged dark matter based black hole, spewed by the trillions out of the big bang and able to pair and split into Herbig Haro systems as the accelerator of star and galaxy formation.

However there are indications that small supernova black hole tend to gather in the center of galaxies not able to form Herbig Haro systems but to feed the newly formed supermassive black hole as the start of the big crunch.

## **Introduction.**

For years, Stephen Hawking (and Hartle) has been applying the No Boundary Proposal, or the idea that the universe is “closed“ and can have a beginning, and an end, however still exist forever.

I will call this a closed cyclic universe and for symmetry reasons a cyclic entangled raspberry shaped multiverse based on my proposal for the Quantum Function Follows Form (FFF) model.

The Form and Microstructure of elementary particles, (also called rigid string) is supposed to be the origin of Functional differences between Higgs- Graviton- Photon- and Fermion particles.

As a consequence, a new paradigm splitting, accelerating and pairing massless Dark Matter Black Hole (without Graviton production) is able to convert vacuum energy (ZPE) into real energy by entropy decrease and quark electron positron production at the black hole horizon. Secondly, a Chiral dark energy Higgs vacuum lattice, is able to explain quick Gas and Dust production without large annihilation at the black hole horizon and Galaxy- and Star formation.

Even microscopic black holes like Sunspots, (Micro) Comets, Lightning bolts, Sprite Fireballs and Ball Lightning seem to produce gas.

The Hubble redshift, in contrast with the mainstream, is supposed to originate local vacuum lattice dilution created by local dark matter black holes.

All black holes eat the Higgs vacuum lattice with a local Planck length extension- as the result and the base for frequency decrease of a passing photon or graviton.

As a result, GABHs are only observable by their background lensing effect and as quasi-soft x-ray sources, to be found in particular around merger galaxies, due to swirling gas and dust expelled from the galaxies. (fig 4)

### **The NEW Plasma Creating Electric Dark Matter Black Hole versus the Hawking Black Hole,**

according to Quantum FFF Theory, the origin of Comet - Sunspot and Ball Lightning mysteries.

I am convinced that Stephen Hawking did not calculate with the possibility of a chiral oscillating Higgs field vacuum lattice combined with propeller shaped Fermions.

Then, due to Vacuum chirality, Electron- and Positron propellers could both pushed away from the BH horizon after spin flip polarization at different distances, forming two charged separated spheres. With quark ( plasma) formation in between.

Based on such a simple object ( propeller and process) oriented ontology, Black Holes could be imagined as charge splitters violating the 2e law of thermodynamics, combined with a continuous microscopic big bang plasma creation process!

According to the new BH paradigm, electrons and positrons are both pushed away from the Black Hole horizon at different distances, forming TWO different charged separated spheres, with Quark ( plasma) formation in between.

How is this possible?

Only if the oscillating Higgs vacuum Lattice (tetrahedral shaped) has a preferred chirality.

So in our Material universe, all the Higgs oscillations follow spiral vacuum lattices.

The vacuum lattices form together the edges of a 3 dimensional tetrahedral system. Each lattice is supposed to be shaped as a left handed spiral and divided into at least three

connected parts.

As a result all neutrinos are left handed! because the neutrino information travels in the form of an Higgs oscillation along these edges.

Each lattice is equipped with two opposite oscillating Higgs field particles, able to transfer photonic and neutrino information with the local speed of light.

Neutrinos and photons are suppose to travel not as particles but as specific Higgs oscillations along different lattice paths of the chiral vacuum lattice, with the local speed of light..

At the same time, positrons must have a preferred spin (OLO left=L) they catch a Gluon to form a u-quark (OLO+ROR) which is better protected for the aggressive oscillations of the left handed Higgs field than an electron ORO combined with the mirror Gluon LOL forming a right handed anti- d-Quark! (ref: 4)

As a consequence, New paradigm Black Holes are CHARGE SPLITTERS violating the  $2e$  law, combined with a micro big bang plasma creation process!

Explanation: it is assumed that Quantum fluctuations around strongly curved (small) BH horizons produce pairs of leptons.  $e^-$ ,  $e^+$  and even compound quarks (d, u, etc, see Fermion 3D string propeller theory: Fermion repelling by Lorentz polarized spin flip). (figure: 6)

As a consequence, the Big Bang did not produce instantly all the Fermions in the universes. Even now lots of Fermions are produced- in the form of negative charged plasma- by most BHs (see Comets, ball lightning.)

3

Small Black holes ( in Starspots, Ball Lightning and Comets like 67P- CG) are hot and produce gas as observed: . [N II], [OIII], and  $H\alpha$ .

The result can be described as follows:

1: Black holes are the same as Dark Matter, they all consume photons, even gravitons and the Higgs field, but REPEL Fermions due to their propeller shape. They produce electric charged plasma.

2: Dark Energy is the oscillating ( Casimir) energy of the Higgs Field equipped with a tetrahedron lattice structure with variable Planck length..

3: Quantum Gravity = Dual Push gravity= Attraction (Higgs-Casimir opposing Graviton push).

4: The Big Bang is a Splitting dark matter Big Bang Black Hole (BBBH), splitting into smaller Primordial Big Bang Splinters (PBBS) forming the Fractal Lyman Alpha forest and evaporating partly into a zero mass energetic oscillating Higgs particle based Higgs field.

5: Dual PBBSs hotspots, produce central plasma concentration in electric Herbig Haro systems as a base for star formation in open star clusters as a start for Spiral Galaxies.

6: Spiral Galaxies will keep both Primordial Dark Matter Black Holes as Galaxy Anchor Black Holes (GABHs) at long distance.

7: After Galaxy Merging, these GABHs are the origin of Galaxy- and Magnetic field complexity and distant dwarf galaxies .

8: Black Holes produce Plasma direct out of the Higgs field because two Higgs particles are convertible into symmetric electron and positron (or even dual quark-) propellers (by BH horizon fluctuations).

9: The chirality of the (spiralling) vacuum lattice is the origin our material universe. (propeller shaped positrons merge preferentially first with gluons to form (u) Quarks to form Hydrogen.

10: The first Supernovas produce medium sized Black Holes as the base for secondary Herbig Haro systems and open star clusters.

11: ALL Dark Matter Black Holes are supposed to be CHARGE SEPARATORS with internal positive charge and an external globular shell of negative charged Quark electron plasma.

12: The lightspeed is related to gravity fields like the earth with long extinction distances to

adapt with the solar gravity field.

13. Quantum FFF Theory states that the raspberry shaped multiverse is symmetric and instant entangled down to the smallest quantum level. Also down to living and dying CATS in BOXES.

14 Large Primordial Big Bang Splinters (PBBS) are responsible for the creation of the Lyman Alpha forest structure and first spiral galaxy forming of the universe, but they seem to be also responsible for the implosion of the universe at the end in the form of Galaxy Anchor Black Holes (GABHs) located mainly outside galaxies. see: (Quasisoft Chandra sources)

15, As a consequence of 12-14, Time is always local time in combination with cyclic period time of the multiverse.

16, If our material universes has a chiral left handed oscillating Higgs field, then our material Right Handed DNA helix molecule could be explained.

However it also suggests that in our opposing symmetric ANTI-MATERIAL entangled neighbor universe the DNA helix should have a Left handed spiral.

According to Max Tegmark: in an entangled multiverse we may ask: is there COPY PERSON over there, who is reading the same lines as I do?

4

If this COPY person is indeed living over there, then even our consciousness should be shared in a sort of entangled DEMOCRATIC form.

Then we are not alone with our thoughts and doubts, see:

Democratic Free Will in the instant Entangled Multiverse.

17, All particles and waves should be entangled with anti-copy particles and Higgs field based waves in our opposing anti universes.

Then wave particle duality and the so called one particle double slit interference could be explained by accepting that real shaped 3D photon particles only exist in their function of Gluons. However Gluons should transfer form information to the oscillating luminiferous Higgs field ether, within about 1 cm distance from a fermion.(see: Babcock and Bergman anomaly,1964)

18, Different elementary particles have different qualities by their different complex stringy shape. Leptons and Quarks have a propeller shape with left or right handed pitch creating charge difference. Gluons, Photons and Neutrino particles have no pitch.

20 All particles can be converted to one or more Higgs particles, Lepto Quarks can be compound particles.

21 All particles are assumed to be present as Higgs particles already in the cyclic Big Bang Black Hole (BBBH) after the former multiverse has collapsed into a Big Crunch Black Hole.

22, We seem to live inside one material universal bubble of an instant entangled (Charge Parity Time) CPT symmetric raspberry bubble multiverse. Each quantum jump or wave function collapse or human choice is guided by this instant entanglement at long distant.

If our material universes has a chiral oscillating Higgs field, then our material Right Handed DNA helix molecule could be explained.

However it also suggests that in our opposing ANTI-MATERIAL multiverse neighbour universe the DNA helix should have a LEFT HANDED spiral.

According to Max Tegmark: in an entangled multiverse we may ask: is there COPY PERSON over there, who is reading the same lines as I do?

If this COPY person is indeed living over there, then even our consciousness should be shared in a sort of DEMOCRATIC form,

Then we are not alone with our thoughts and doubts, see:

Democratic Free Will in the instant Entangled Multiverse.

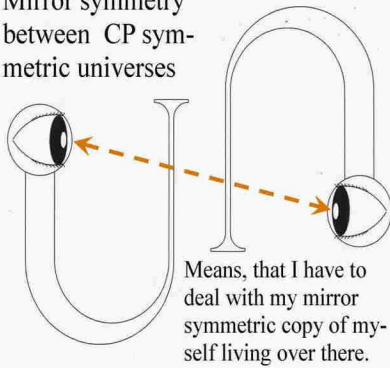
<http://vixra.org/pdf/1401.0071v2.pdf>

# ER=EPR in action

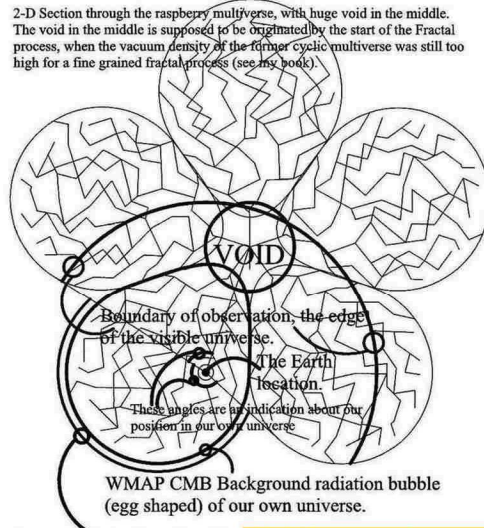
The Wavefunction collapse in the (CP symmetric) raspberry multiverse by the entangled observation between (anti) copy particles

According to Quantum FFF Theory, the collapse of the wavefunction is assumed to be triggered by particle collisions with instant entanglement between (anti-) COPY universes. So there is Charge and Parity symmetry between the entangled particles living in opposing universes. Each particle is its own observer!! Each human has to deal with one or more opposing anti-COPY humans.

Mirror symmetry between CP symmetric universes



2-D Section through the raspberry multiverse, with huge void in the middle. The void in the middle is supposed to be originated by the start of the Fractal process, when the vacuum density of the former cyclic multiverse was still too high for a fine grained fractal process (see my book).



The Dodecahedron Raspberry Multiverse with a 5-fold neighbour Low Variance contact structure lead to a Golden Ratio (Phi) in every single universe according to Quantum FFF Theory (Function Follows Form)

Figure 1 CP symmetric copy particles are connected by ER wormhole information exchange ( observer observed relation) for wavefunction collapse.

Benjamin Libet already found interesting differences in human reaction time. RPI and II.

2 Diagrams of a 12 fold Raspberry Multiverse showing preplanning (RPI) of one of the instant entangled copy subjects in the Benjamin Libet lab, with- and without a Veto action of one of the copy subjects. (according to Quantum FFF Theory)

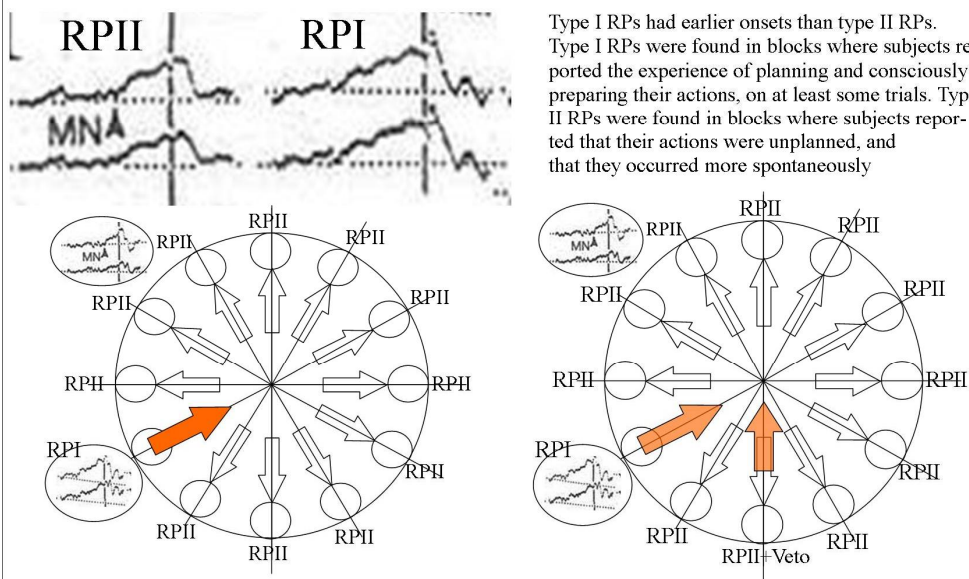
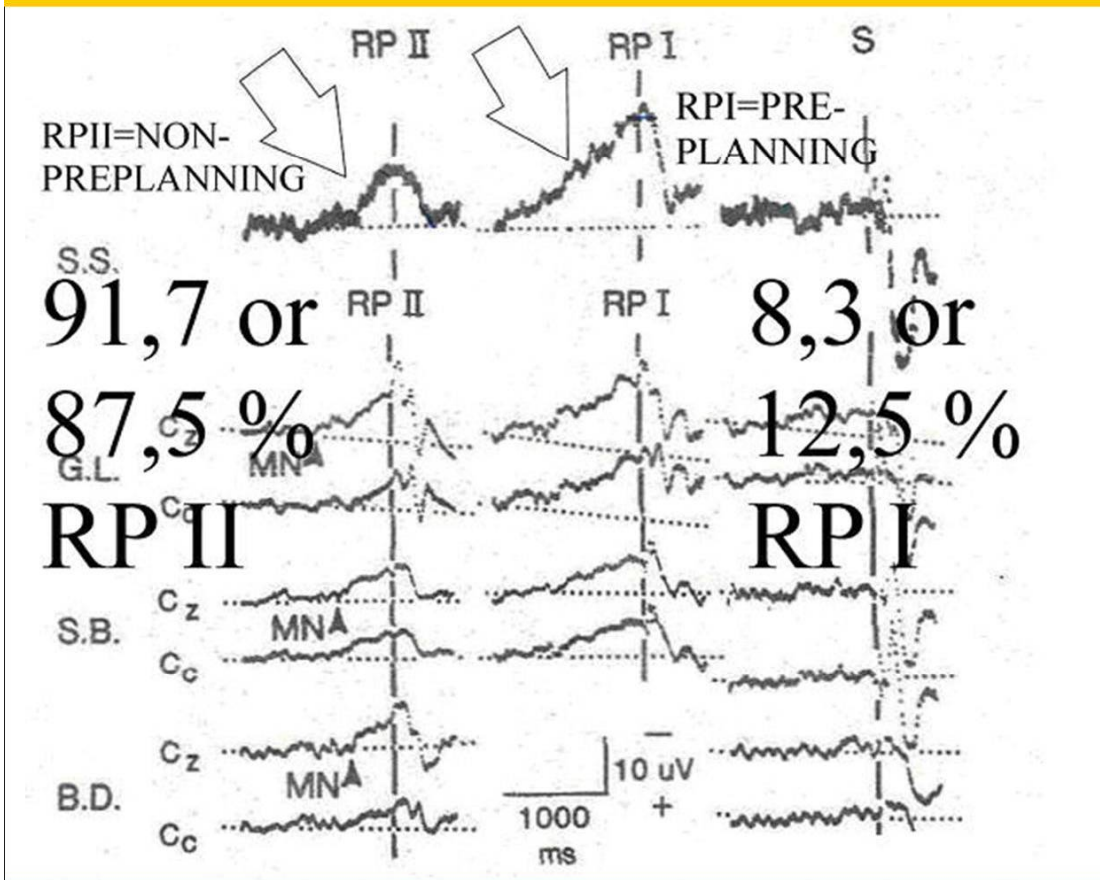


Figure 2 Benjamin Libet suggested already that we seem to be able to veto an act or idea as the only free will component.



Future Libet statistical experiments should solve the conscious—Quantum Mechanical relation question. The famous B. Libet brain scan experiment of 1964, suggests that in only a few percentage of the brain measurements, test persons seem to pre-plan a simple action as the pressing of a button. Reason to do the experiment again focussed on a fixed universal RPI/RPII ratio, like the golden mean.



Above: copies of Libet's 1964 Test results on Electric Readiness Potential (RP) listed for 4x test persons. RPI shows without preplanning. RPII shows with preplanning. If there are 12x or 8x cooperating multiversal entanglement origins then the statistical ratios should show resp. 91.7 or 87.5 RPII and 8.3 or 12.5 RPI according to Quantum FFF theory.

Figure 3 Copies of Libet's 1964 research on test persons.

## **The NEW Plasma Creating Electric Dark Matter Black Hole versus the Hawking Black Hole**

**Possible candidates for GABHs are a new class of Dark Matter Black Holes found by Chandra observations**

. ( figure 4)

<http://chandra.harvard.edu/photo/2004/m101/>

“Quote;“

Chandra observations of the spiral galaxy M101 and several other nearby galaxies have revealed a possible new class of X-ray sources. These mysterious X-ray sources, marked with green diamonds in the image, are called "quasi soft" sources because they have a temperature in the range of one to four million degrees Celsius.

The power output of quasi soft sources is comparable to or greater than that of neutron stars or stellar-mass black holes fuelled by the infall of matter from companion stars.

This implies that the region that produces the X-rays in a quasi soft source is dozens of times larger.

One explanation is that these sources are produced by intermediate-mass black holes that have masses a hundred or more times greater than the mass of the Sun.

Such objects would have much larger event horizons, which would account for the larger sizes and lower temperatures associated with the quasi soft sources.

Alternatively, they could be standard neutron stars or stellar black holes where the associated region of hot gas is for some as yet unknown reason much larger than usual. "Hard" X-ray sources, such as neutron stars or stellar-mass black holes have temperatures greater than ten million degrees.

The "super soft" X-ray sources due to white dwarfs have temperatures of several hundred-thousand-degrees. A total of 72 quasi soft sources were discovered in the four galaxies: M101, M83, M51, and NGC 4697.

Until a few years ago, astronomers only knew of two sizes of black holes: stellar black holes with masses about ten times that of the Sun, and supermassive black holes located at the centers of galaxies, with masses ranging from millions to billions times that of the Sun. Recent evidence, however, suggests that a class of "intermediate-mass" black holes may also exist. Theories for the formation of intermediate-mass black holes involve the collapse of extremely massive stars, or the merger of many stellar-mass black holes.

As more quasi soft sources are discovered, the types of galaxies in which they reside and where they are located in a galaxy should give astronomers additional clues as to their nature and how they are formed.

The present study indicates that quasi soft occur in various locations in elliptical as well as spiral galaxies.” (End of the quote)

A new class of Quasisoft X-ray sources found around elliptical and spiral galaxies. According to Quantum FFF theory, these sources should be the tell tales of the creator black holes of the universe and the Lyman Alpha forest distribution of galaxies. However they also could be the future executioner of the universe. (photos: Chandra /Harvard)

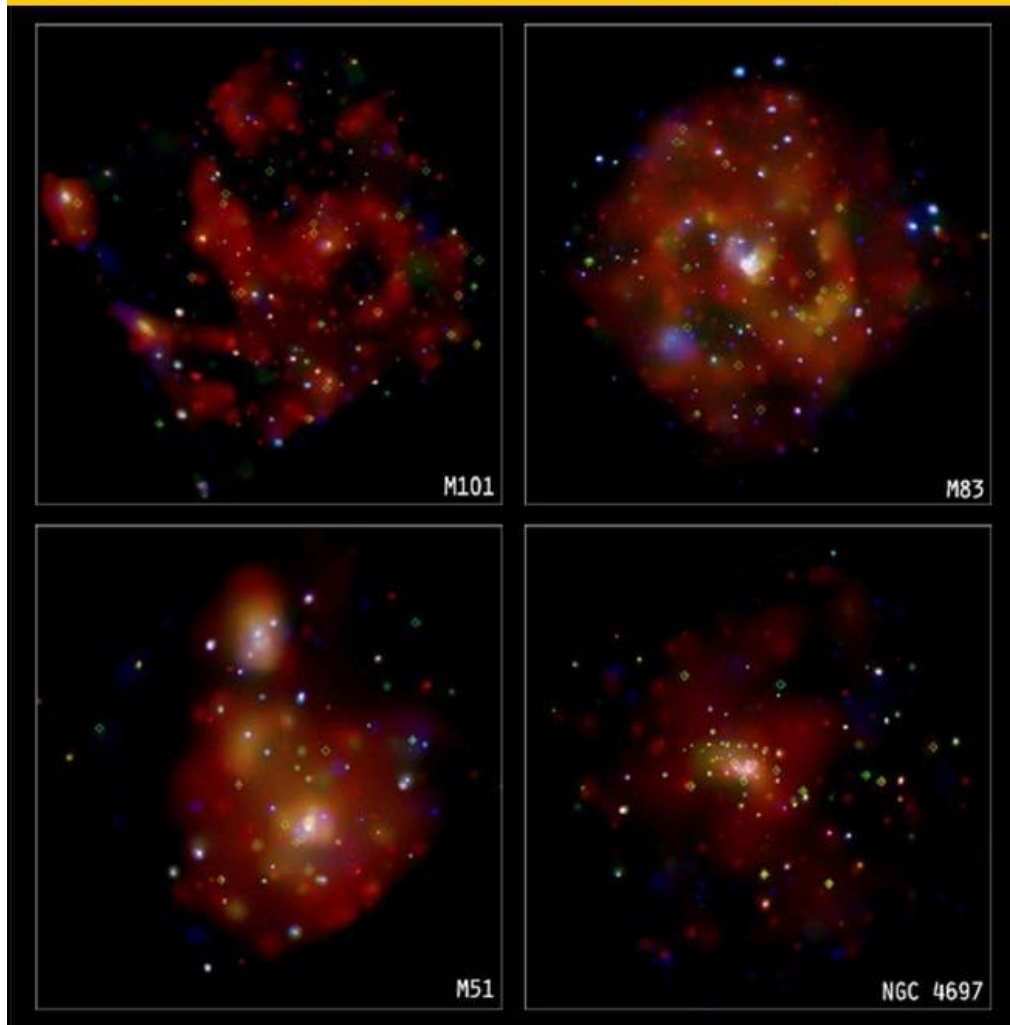


Figure 4 Quasi Soft X-ray sources or possible GABHs ( Galaxy Anchor Black Holes)

### **The new growing supermassive central galaxy merger black hole as a start for the Big Crunch.**

New support for Big Bang Black Hole splitting and later Central Galaxy Black Hole merging

According to Quantum FFF Theory,

Old and Young Super Massive Black Holes (SMBHs) are related respectively to the Big Bang up to the Big Crunch



**Old** Super massive black holes (SMBHs) are supposed to be created by the BH splitting Big Bang and the related inflation epoch.

**Young** SMBHs however, are the result of merger S-Nova black holes located in the center of galaxies, as a start of the Big Crunch.

References: Supermassive black holes do not form from stellar black holes.

<https://www.sciencedaily.com/releases/2016/04/160406075114.htm>

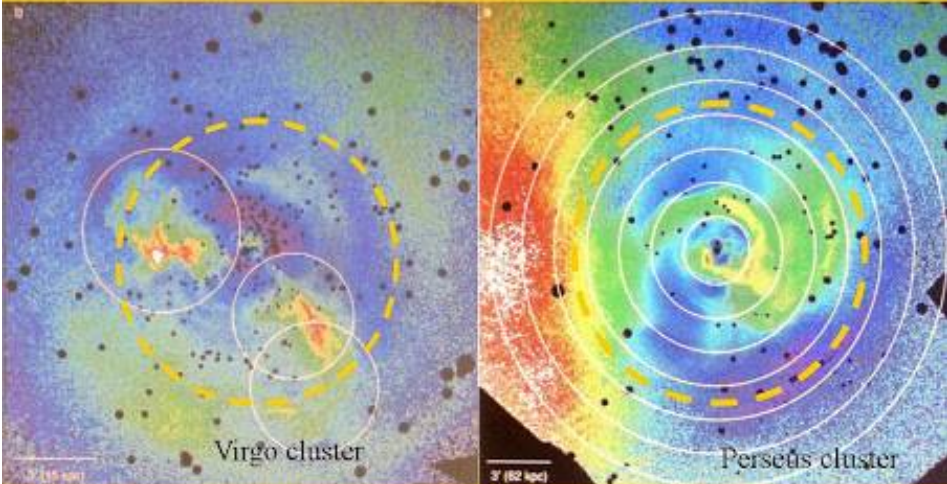
and:

Supermassive black holes may be lurking everywhere in the universe

Surprise discovery of 17-billion-solar-mass black hole in sparse area of local universe. (fig 7.)

<https://www.sciencedaily.com/releases/2016/04/160406133616.htm>

X-ray point sources (Dark matter black holes) in Virgo and Perseus cluster centres present evidence for black hole hierarchy. According to Quantum FFF Theory (Function Follows Form), not the giants- but the smallest black holes reside in the centre of galaxies (see M104) and consequently in galaxy clusters. See also: <http://vixra.org/abs/1406.0076> Images: <http://arxiv.org/ftp/arxiv/papers/1410/1410.6485.pdf>



Below: Example of the galaxy black hole hierarchy model observed at Andromeda (M31 below left) and the Sombrero galaxy (M104 right).

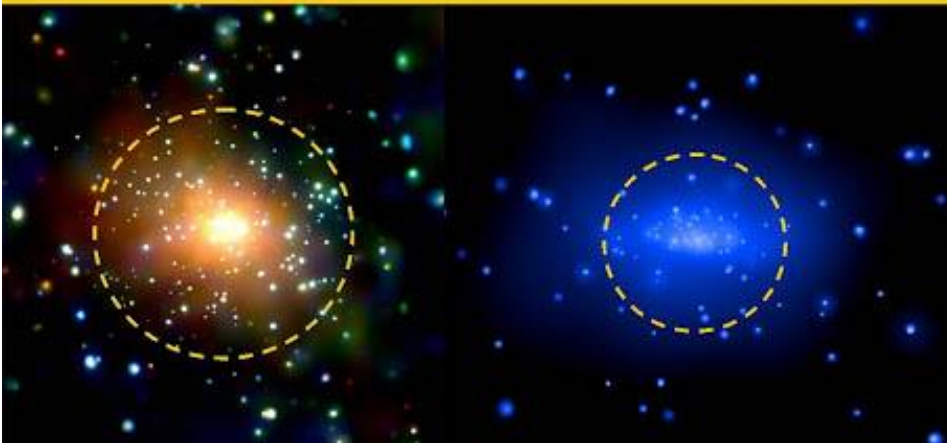


Figure 5. Black hole hierarchy in galaxy centers.

# The NEW Plasma Creating Electric Black Hole versus the Hawking Black Hole, according to Quantum FFF Theory, the origin of Comet - Sunspot –BL mystery.

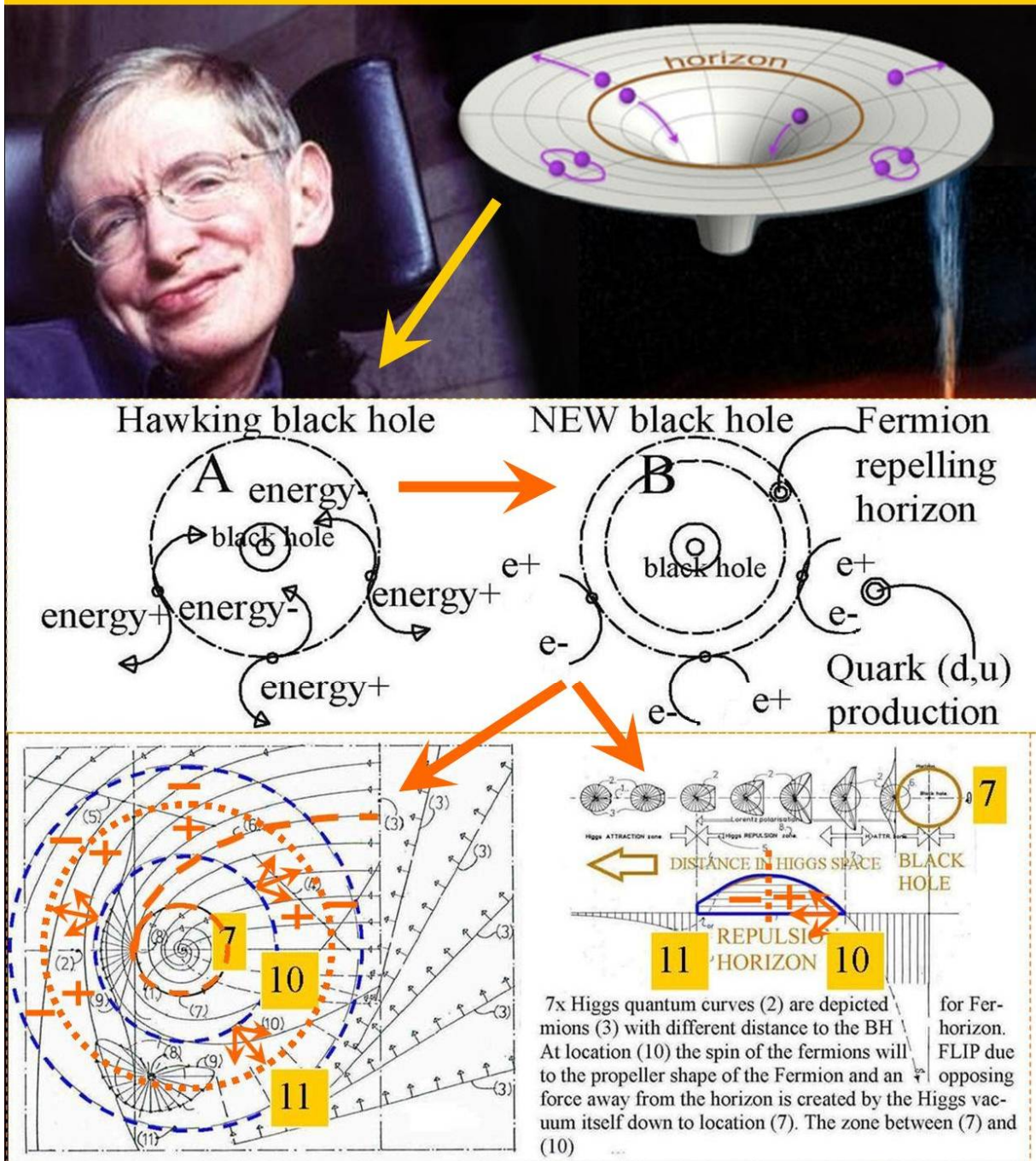


Figure 6. The new Electric Plasma Creating Black Hole.



**As a consequence we find supermassive young and old black holes respectively in the near or early universe.**

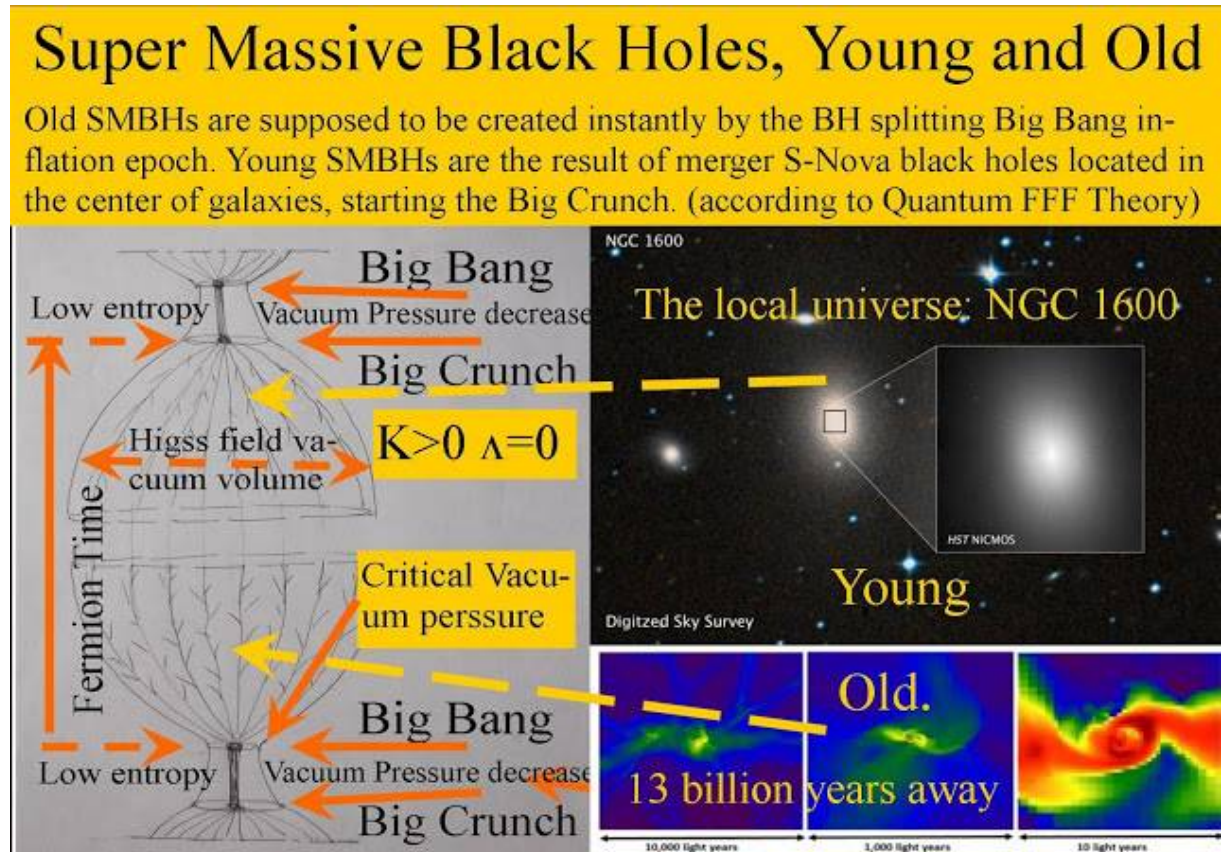


Figure 7 Supermassive black holes young and old.

According to Quantum FFF Theory, all early Quasars are produced by the trillions of paired electric dark matter black holes (EDMBHs) spawn by the big bang and creating early Herbig Haro objects, with star/galaxies forming in between. The so called hotspots (often called bowshocks in HH-systems) are supposed to represent the new paradigm black holes. The "lobes" represent plasma created directly out of the CHIRAL Higgs field by "pair production" at the black hole horizons with minimal annihilation effects, because positrons seem to be able to form positive quarks. The plasma is pushed away from the horizons in contrast with mainstream physics.. For the chiral Higgs see: <https://www.newscientist.com/article/mg22730354-600-possible-new-particle-hints-that-universe-may-not-be-left-handed/>

# Dual entropy trajectories of each cyclic universe

Big Bang and Big Crunch originated by the splitting pairing and recycling via supernova black holes, merging into each growing Galaxy central black hole leading to the cyclic Big Crunch.

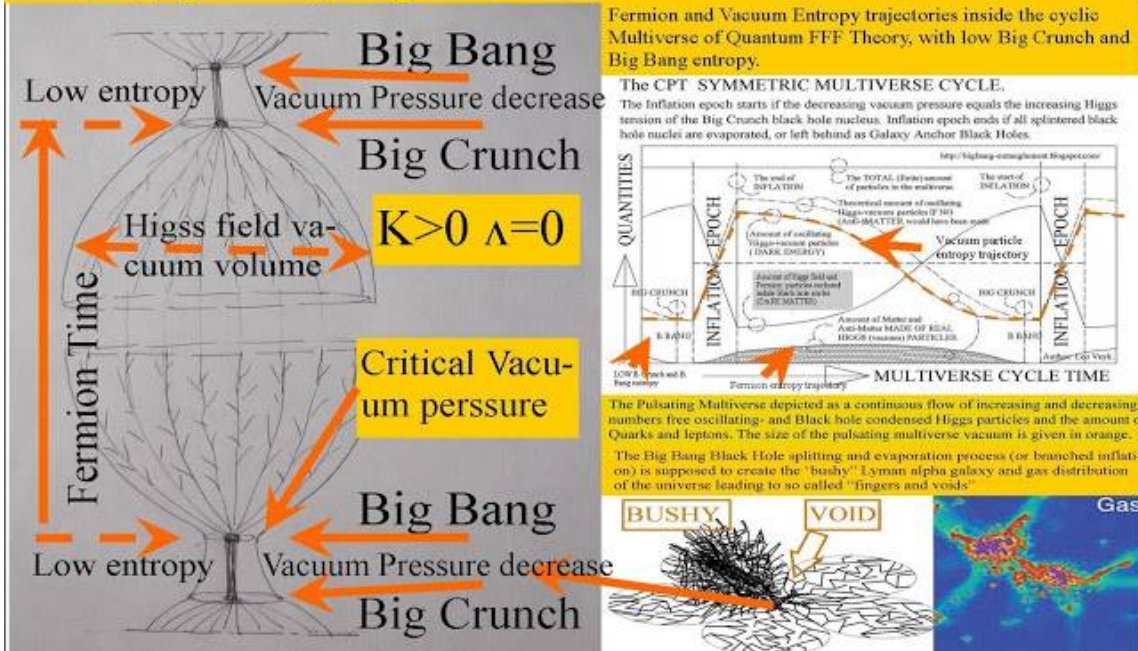


Figure 8, Entropy trajectories of each cyclic universe inside the raspberry shaped multiverse

# The great Penrose High-Low Entropy misconception.

Big Bang and Big Crunch originated by the splitting pairing and recycling via merging of central galaxy S-nova black holes. According to Quantum FFF Theory..

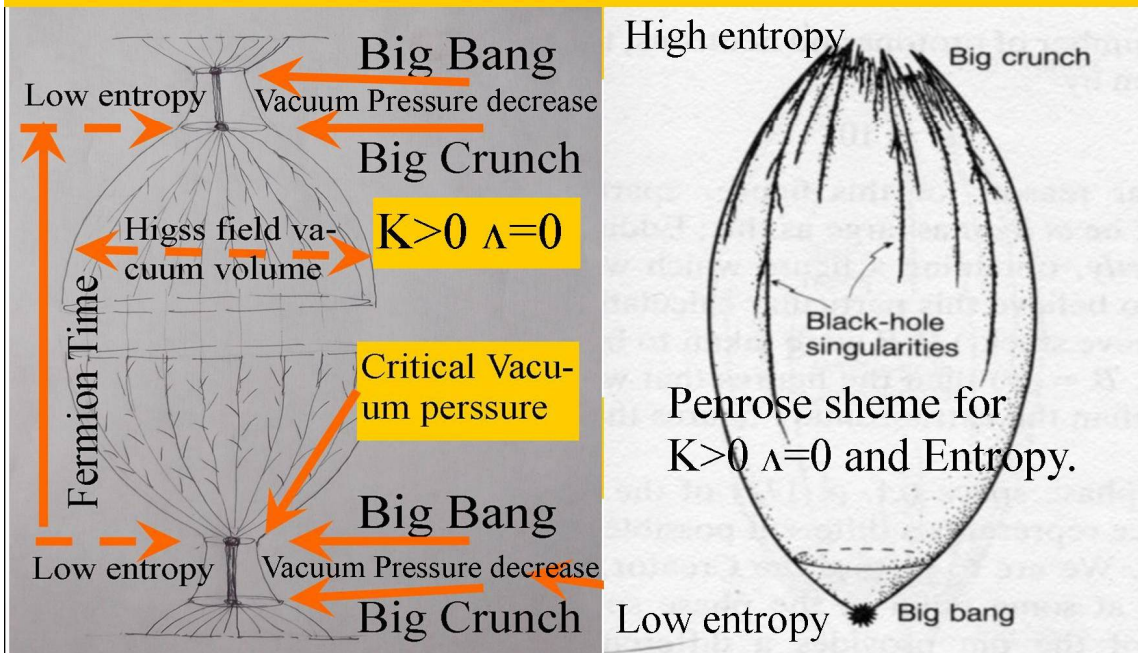
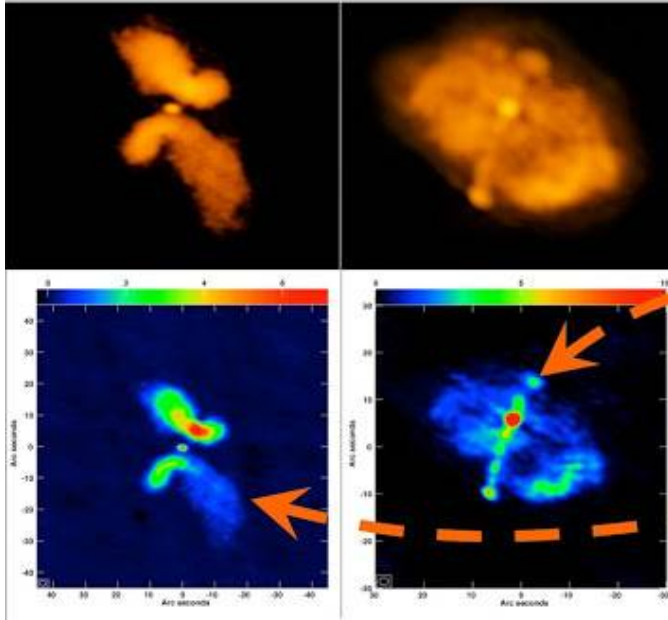


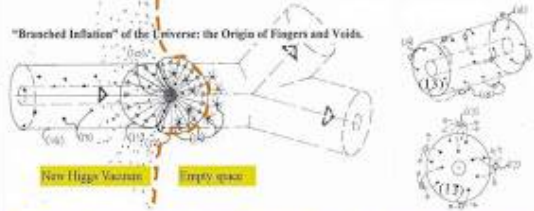
Figure 9, Comparison with Penrose proposals for a cyclic universe.



Abundance of X-shaped radio sources with off-axis distortions. With  $Z=0.2-0.8$ . by D.H.Roberts et al. in line with the Quantum FFF model.



How massive galaxy clusters are formed in the early Universe. According to Quantum FFF theory, the Big Bang process is the result of a fractal shaped splitting and evaporating BB dark matter black hole process creating the Lyman Alpha structure of galaxy distribution. By the evaporation of BB "splinters" (14) the oscillating Higgs field vacuum is created by the so called "Branched inflation". Retarded Black hole splinters (13) do not evaporate by Higgs vacuum pressure, but create plasma "tails" pushing them away from the center of gravity in search for a partner to form a Herbig Haro system.(16,17)



The origin of the Lyman Alpha Forest (15) and Higgs vacuum, by the splitting of the Big Bang Black Hole (BBBH) into smaller Sphaleron BHs (14). The splinter BHs (14) evaporate into smaller evaporating black holes at the Front (14) which compensate the pressure from the Backside splinter BHs (11). The BHs (11) are assumed to partly evaporate into BHs (14) also into a newly formed oscillating Higgs vacuum until the Higgs vacuum pressure drops the evaporation and leaves Galaxy Forming BHs (13) behind. However single BH will pair (16) with the nearest other BHs to form Dumbbell systems, which efficiently form Quasar Stars and Galaxies (17) in between. (author: Leo rock)

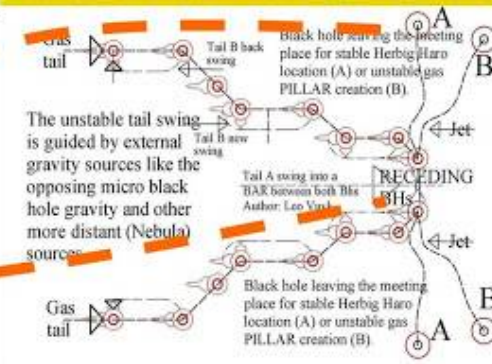


Figure 10, Evidence for the Splitting and Pairing "trick" of black holes, forming Herbig Haro Systems.

## Secondary and tertiary Dual BH Herbig Haro systems, as the origin of different shaped dwarf galaxies and Star clusters.

Below: Simplification of different sized dual black hole (5) based Herbig Haro Systems with dwarf and star formation in between, in the halo of the MW.

Dual Galaxy- and Stellar Anchor Black Holes (G-SABHs) as former Herbig Haro bowshocks, observed in deep space or Planetary Nebula.



Dual black hole systems of all scales. Galaxy and Stars are supposed to be the origin of the self organising universe according to a new electric dark matter black hole model called Quantum FFF Theory. See: Image credit: Prathamesh Tamhane/Yogesh Waddekar

According to Quantum FFF Theory, Black holes create Proton-Electron plasma at the Fermion repelling horizon. As a consequence dual black hole systems like Herbig Haro objects are equipped with dual EM jets, supported by cone shaped Casimir pressurized Higgs field vacuum polarization. Birkeland and Alfvén current circuits are supposed to be the result. Higgs-Casimir pressure vectors are depicted above and below.

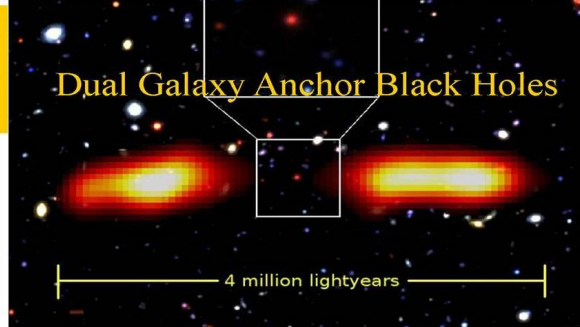
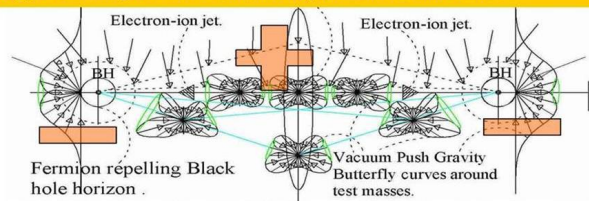


Figure 11, Secondary and tertiary dual black hole based Herbig Haro systems for Galaxies and Stars.



SYSTEMATIC SKETCHES of the relation between Galaxy types and the responsible "Black Holes" (1) with the resulting "White Holes" (2).

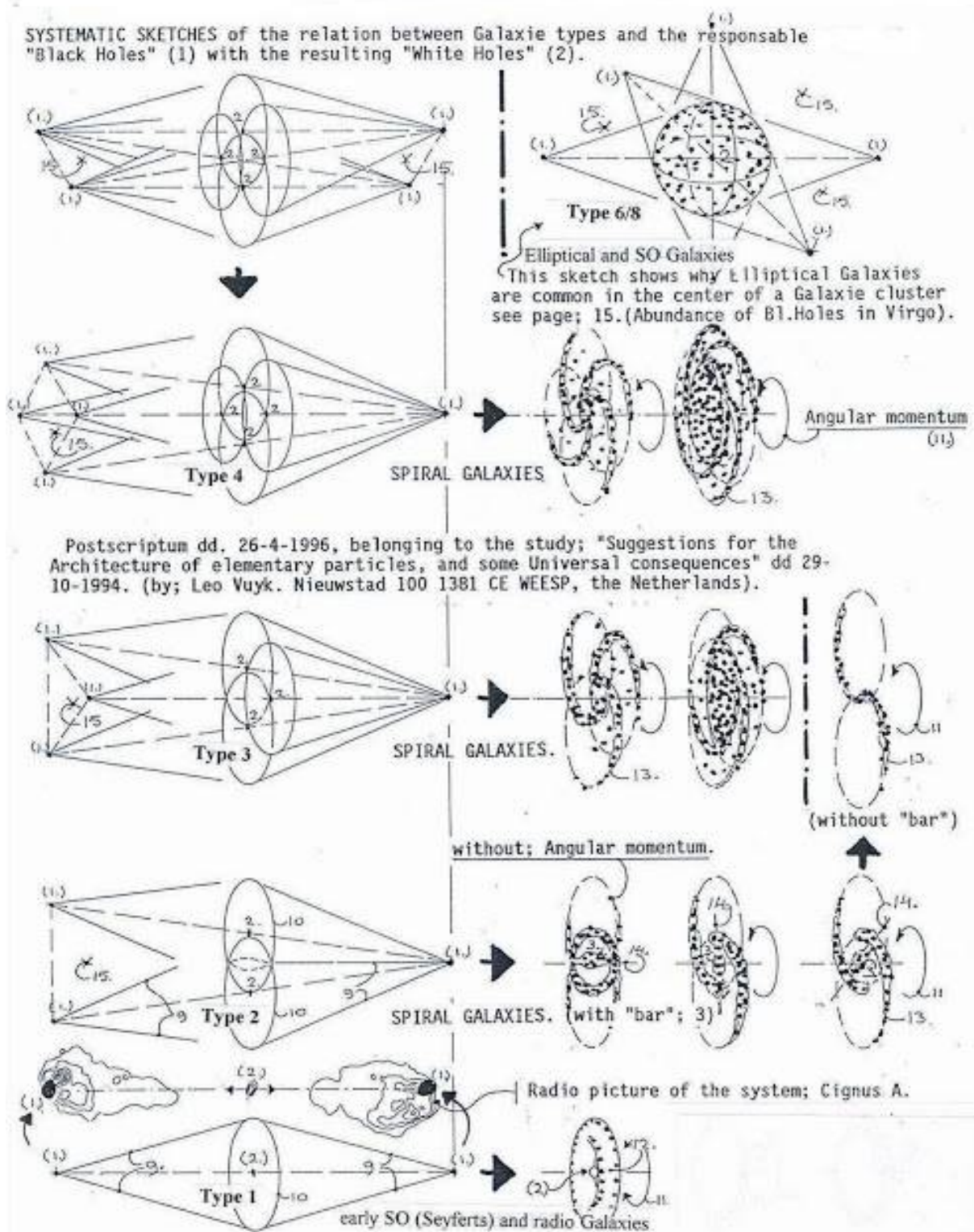
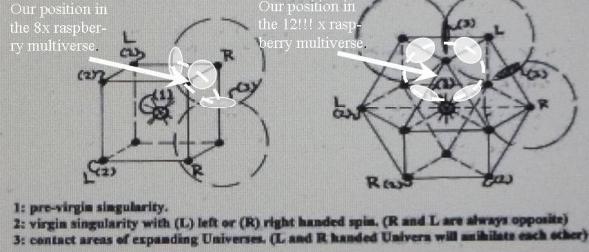


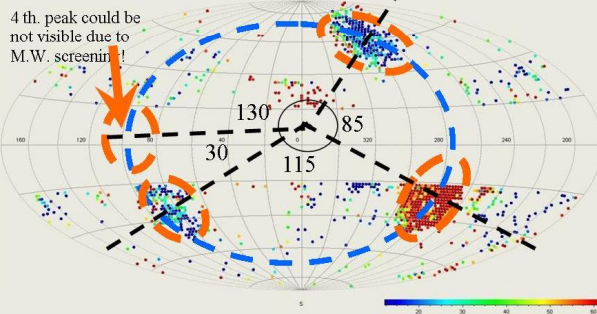
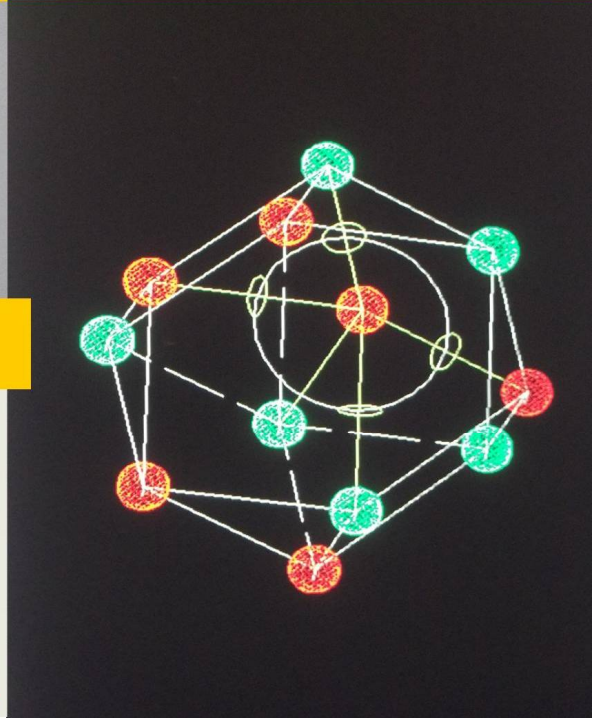
Figure 12, How primary Galaxy Anchor Black Holes ( (1) GABHs) influence the shape of Galaxies.

Our position in the 8 or 12 !!! fold raspberry multiverse. Elliptic shaped CMB peak radiations are tell tales. (left). At the rightside a 12 fold symmetric cube octahedron multiverse diagram is depicted with red: matter and green: anti matter entangled universes.

**CONFIGURATION FOR 8 OR 12 UNIVERSES.**



1: pre-virgin singularity.  
 2: virgin singularity with (L) left or (R) right handed spin. (R and L are always opposite)  
 3: contact areas of expanding Universes. (L and R handed Universa will annihilate each other)



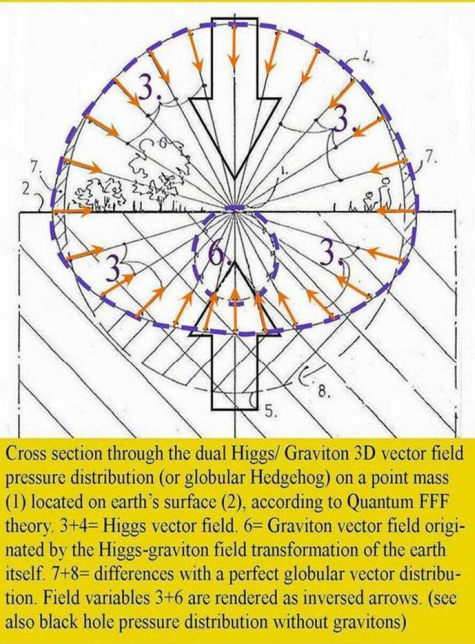
4 th. peak could be not visible due to M.W. screenin !!

**Figure 13, Our possible position in the multiverse base don elliptic shaped CMB peak radiations.**

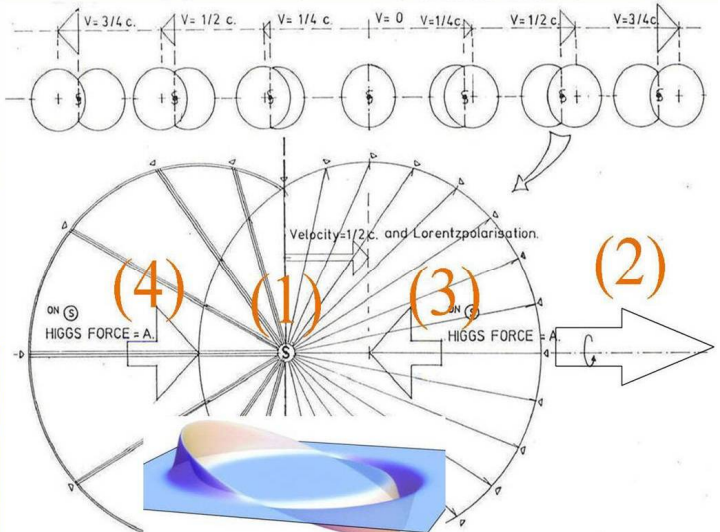
Equivalence between gravity and acceleration does not hold in Quantum FFF Theory. Mass in motion needs a reference frame of ZPE oscillating Higgs field and Lorentz polarization of conscious propeller Fermions (s) to keep a non accelerated flight.

Quantum Gravity as pressure distribution of the oscillating dual Higgs/Graviton vector field.

Polarized Fermion Mass in motion through the resistive, but also pushing oscillating Higgs vacuum (according to Quantum FFF theory)



Cross section through the dual Higgs/ Graviton 3D vector field pressure distribution (or globular Hedgehog) on a point mass (1) located on earth's surface (2), according to Quantum FFF theory. 3+4= Higgs vector field. 6= Graviton vector field originated by the Higgs-graviton field transformation of the earth itself. 7+8= differences with a perfect globular vector distribution. Field variables 3+6 are rendered as inversed arrows. (see also black hole pressure distribution without gravitons)



**Figure 14, Equivalence between gravity and acceleration does not hold in Q-FFF Theory.**



## References.

- [58] viXra:1603.0253 Reaction Less Drive by Anti Maxwell Dropping Zone Around a
- [57] viXra:1505.0101 The Origin of Bok Globules and Molecular Clouds, Splitting and
- [56] viXra:1503.0186 Primordial Electric Dark Matter Black Holes Outside Galaxies
- [55] viXra:1503.0097 Quantum FFF Theory, Poster News 4.2
- [54] viXra:1502.0086 Parity and Chirality as a Base for Quark-Gluon Plasma and Dust
- [53] viXra:1411.0039 Quantum FFF Theory, Poster News 2
- [52] viXra:1410.0039 Evidence for Dark Matter Black Hole Based Plasma, Dust and Ice Production Inside Comets Like 67P,C-G. and the Growing Earth.
- [51] viXra:1409.0164 The O'Connell Effect in Eclipsing Binaries Explained by Mass Related Light Speed Extinction Distances (Lasof) of Stars and Even Planets.
- [50] viXra:1407.0001 Evidence for Evaporating Dark Matter Particles in Silicon Fireballs.
- [49] viXra:1406.0076 Galaxy Formation and Evolution According to Quantum FFF Theory.
- [48] viXra:1406.0019 Quantum FFF Theory Proposals for Some Unsolved Physics Problems.
- [47] viXra:1405.0224 Dual Star Ejection in Open Star Clusters by the Central Star
- [46] viXra:1402.0132 Reconciliation of GR and QM by a New Gravity-Black Hole and Lightspeed Model Called Quantum- FFF Theory.
- [45] viXra:1402.0044 The Impossible Zero Point Electric Black Hole as the Origin of New Physics even for Comet slike 67P,C-G.
- [44] viXra:1401.0115 Calabi Yau Shaped Double Fermion Spin States.
- [43] viXra:1401.0071 Democratic Free Will in the Instant Entangled Multiverse.
- [42] viXra:1312.0143 The Navel Cord Multiverse with Raspberry Shape.
- [41] viXra:1312.0076 Are Sunspots Made of Gravitating Dark Matter Black Holes?
- [40] viXra:1310.0101 The New Nuclear Magic Number (34) Explained by the Polar Coaxial Ring System of Category: Nuclear and Atomic Physics
- [39] viXra:1310.0059 The Semi Relativistic Higgs Field Aether with Mass Related Lightspeed Adaptation.
- [38] viXra:1309.0081 New Physics by Table Top Experiments.
- [37] viXra:1308.0083 The Raspberry Shaped Super Symmetric Multiverse
- [36] viXra:1307.0068 Quantum Function Follows Form Theory, the Small Scale, Posters part 1.
- [35] viXra:1307.0067 Quantum Function Follows Form Theory, the Large Scale, Posters part 2.
- [34] viXra:1306.0218 Dark Matter UFO Dust Particles or Quantum Knots in the LHC at CERN ?
- 33, viXra:1306.0065 The Splitting Dark Matter- Black Hole- Big Bang and the Cyclic Multiverse.
- 32,viXra:1305.0140 Quantum FFF Theory Experiments, a Summary.
- 31,viXra:1305.0041 The Shnoll Effect Explained by Quantum FFF Theory.
- 30,viXra:1304.0022 The Self Organizing Universe in the Carina Nebula.
- 29,viXra:1303.0211 Hubble Redshift Combined with Universal Contraction is Possible.
- 28,viXra:1303.0053 Micro Birkeland Currents Between Two RF Generated Plasma Balls in the Laboratory.

- 27**,viXra:1302.0172 Silicon Based Ball Lightning Globule Structures and Signs for Accumulation and Retarded Decrease of Tunnelling Energy Bullets.
- 26**,viXra:1301.0088 Two or Three Large Quasar Groups (LQGs) Located at the Start of Two or Three Lyman Alpha Systems and a Part of the Raspberry Multiverse?
- 25**,viXra:1301.0050 Dwarf Galaxies and Their Relation with Dark Matter Based Galaxy Anchor Black Holes (Gabhs).
- 24**,viXra:1210.0177 Instant Broglie Bohm Pilot Waves, the Origin of All Entanglement Effects in the Lab and Wavefunction Collapses in Our Universe as Related to Our Opposing Anti-Copy Universe(s)According to Quantum FFF Theory.
- 23**,viXra:1209.0092 New Dark Matter Black Holes and a New Dark Energy Higgs Field, Lead to a Bouncing CP Symmetrical Multiverse, and New Experiments.
- 22**,viXra:1209.0061 Birkeland Currents, Sunspots, Comets and Ball Lightning Originated by New Paradigm Dark Matter Black Holes.
- 21**,viXra:1209.0030 Majorana and Sterile Neutrino Solutions in the Quantum-FFF Model.
- 20**,viXra:1208.0031 Clumpy Dark Matter Around Dwarf Galaxies a Support for an Alternative Black Hole Theory According to the Quantum Function Follows Form Model.
- 19**,viXra:1202.0091 Earth Magnetic Monopole Array Field Interaction with Cyclotron – Synchrotron Electrons and Muon Conversion Used for Levitation Systems.
- 18**,viXra:1201.0092 Earth Magnetic Monopole Array Field Interaction with Cyclotron Electrons used for Levitation Systems.
- 17**,viXra:1112.0065 LHC Signals Between 121-130 Gev Interpreted with Quantum-FFF Theory
- 16**,viXra:1111.0096 Reconciliation of QM and GR and the Need for a Pulsating Entangled CPT Symmetric Raspberry Shaped Multiverse.
- 15**,viXra:1111.0061 Black Hole Horizon Curvature Dependent Balance Between Plasma Creation and e-e+ Annihilation in Quantum FFF Theory.
- 14**,viXra:1108.0036 Artificial Ball Lightning Production and Exploitation Device for Zero Point Electric Energy Usage.
- 13**,viXra:1108.0006 Mass in Motion in Quantum FFF Theory
- 12**,viXra:1104.0083 Quantum FFF Theory in Posters.
- 11**,viXra:1104.0044 Ball Lightning, Micro Comets, Sprite-Fireballs and X-Ray/gamma Flashes According to Quantum FFF Theory.
- 10**,viXra:1104.0002 Stellar Anchor Black Holes as the Remnants of Former Herbig Haro Objects
- 9**,viXra:1103.0097 ZPE Zero Point Energy Examples Around Black Holes.
- 8**,viXra:1103.0068 Funktion Follows Form, at the Quantum Scale and Beyond.
- 7**,viXra:1103.0024 Quantum Gravity and Electro Magnetic Forces in FFF Theory
- 6**,viXra:1103.0015 Wavefunction Collapse and Human Choice-Making Inside an Entangled Mirror Symmetrical Multiverse.
- 5**,viXra:1103.0011 An Alternative Black Hole, Provided with Entropy Decrease and Plasma Creation
- 4**,viXra:1103.00023- Dimensional String Based Alternative Particles Model
- 3**,viXra:1102.0056 Experiments to Determine the Mass Related Lightspeed Extinction Volume
- 2**, viXra:1102.0054 Atomic Nuclear Geometry Based on Magic Number Logic.
- 1**,viXra:1102.0052 Construction Principles for Chiral “atoms of Spacetime Geometry
- =====