

Reaction less Drive by Anti Maxwell Dead Zone around a Wire.

Leo Vuyk,
Architect, Rotterdam,
the Netherlands

Abstract.

According to Quantum FFF Theory (Function Follows Form at the quantum level) the magnetic quantum field has always TWO different shaped monopole vector components: a North- and a South vector field component. This is comparable with the electric Quantum field, equipped with Plus and Minus vector components but it is in contrast with all other quantum fields like the neutrino- gravity- or x-gamma ray field.

After interference of the magnetic wave with a real spinning propeller shaped Fermion particle, TWO real monopole magnetic waves from opposite direction will collapse and come to life as two real rigid shaped photons, as the result of two individual mutated oscillating Higgs field particles from the vacuum.

These photons should do the magnetic job by interlocking temporarily with the Fermion, and give the Fermion a push to the left respectively a push to the right fully in line and according to the Lorentz force law.

However, based on observation of iron powder patterns around wires, it is assumed that if these monopole particle/ wave dualities travel parallel to each other inside the Higgs field, (and not- as normal- in opposition due to the natural opposing curvature of the so called B field)

.As a result, the magnetic field strength- created by the wire itself-locally drops down to zero, with a up to zero reduced Lorentz force on the iron powder atoms.

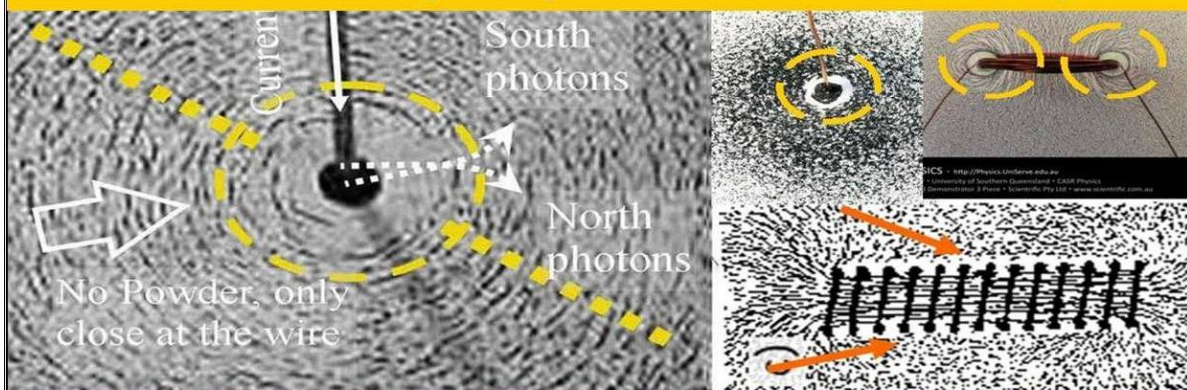
This is in contradiction with Maxwell's magnetic field law around an electric energized wire and I call it the "tubular local magnetic dropping zone" (dead zone) around the electric wire, which can be used for reaction less drive propulsion and Levitation in combination with different forms of strong tubular or spiral magnets.

Magnet optimisation is suggested to form spiral configurations of high performance magnet platings with a spiralling electric coils in between.

The Lorentz force created on the wire by the static magnetic field of the tubular or spiral magnet (s) is supposed to be the only force in the system, by the absence of a reaction force on the magnet due to the local magnetic dropping zone.

Anti Maxwell magnetic field reduction close to an electric wire.

Explained by detail observation of iron powder distribution (the ring shaped absence) around a wire or coil. Below: Several observations and explanation by the curvature of monopole quantum information arrays.



According to Quantum FFF theory, all magnetic fields can be presented as DUAL Magnetic Monopole Photon Vector Arrays. These monopole arrays undergo curvature. As a result, the magnetic field intensity around the Earth and a wire is NOT dropping off with the square of the distance from the source!! The field become stronger polarized away from the source (See images). Close to the current transporting wire the magnetic field strength is zero due to the parallel trajectories of North an South Photons before curvature and polarisation of iron powder (Author: Leo Vuyk)

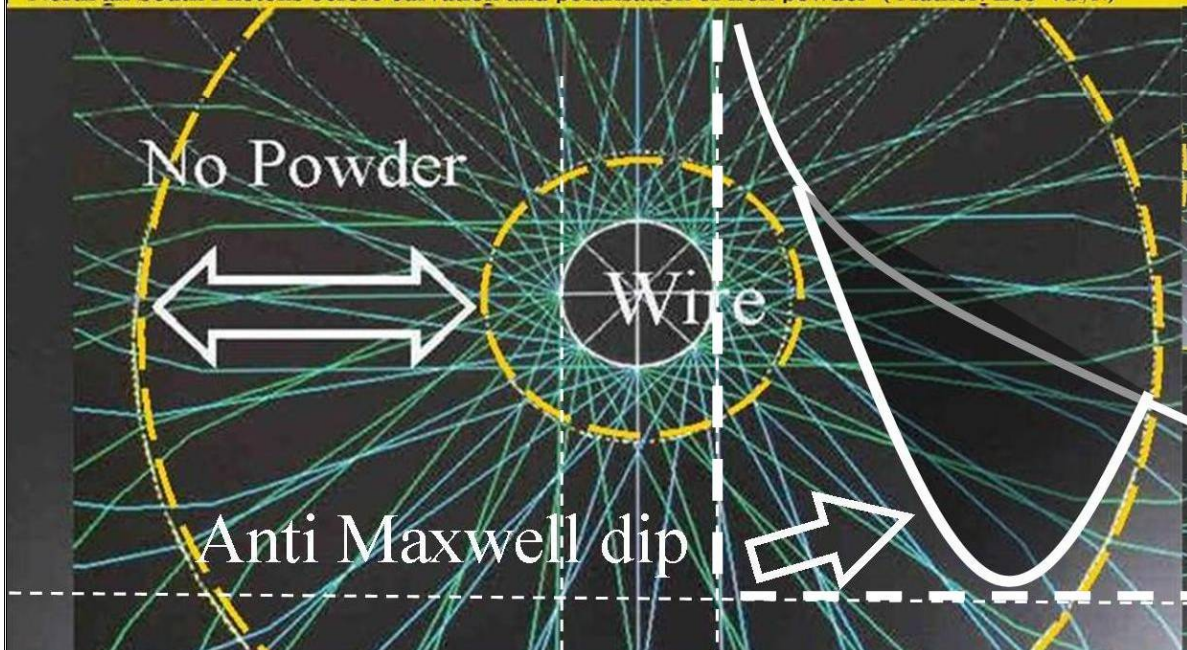
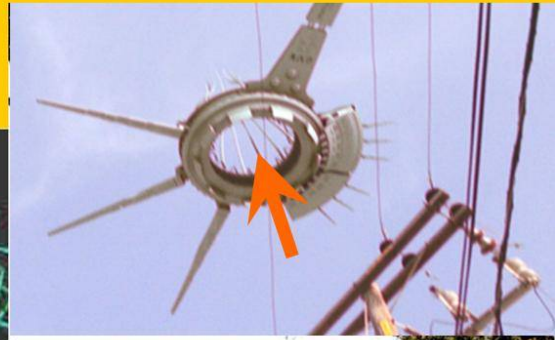


Figure 2 Anti Maxwell magnetic field strength reduction close to an electric wire.

Examples of Anti-Maxwell reactionless anti gravity propulsion by a direct current coil wound around coaxial magnetized metal rods (see Big Basin Ufos and Sundara Vimana ancient Babylon)

Reaction less space propulsion principle based on a so called "Anti Maxwell zone" around a direct current in a wire. According to Quantum FFF Theory based dual (North and South) magnetic photon monopole model.



Big Basin Ufo California

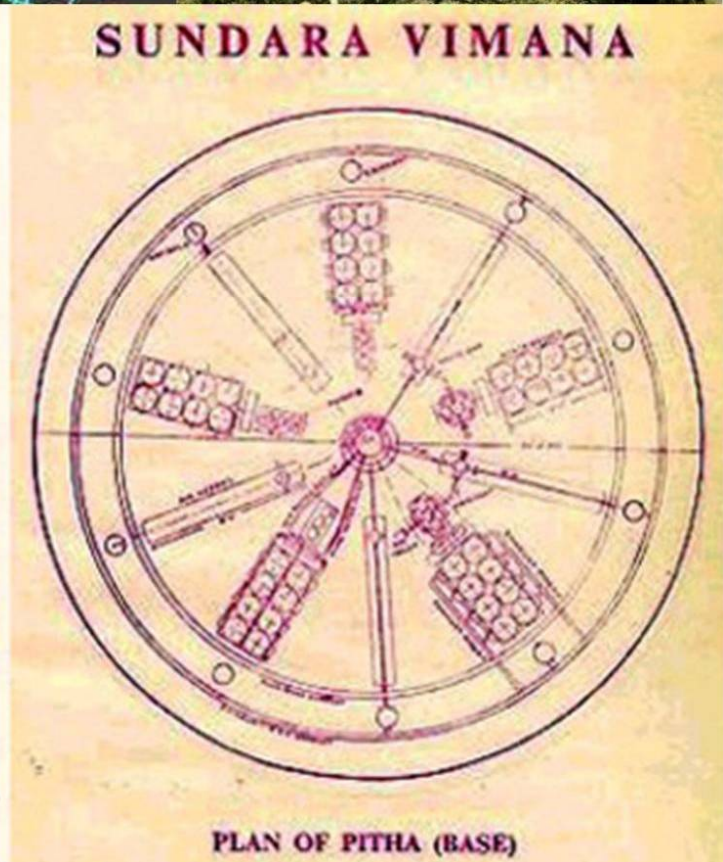
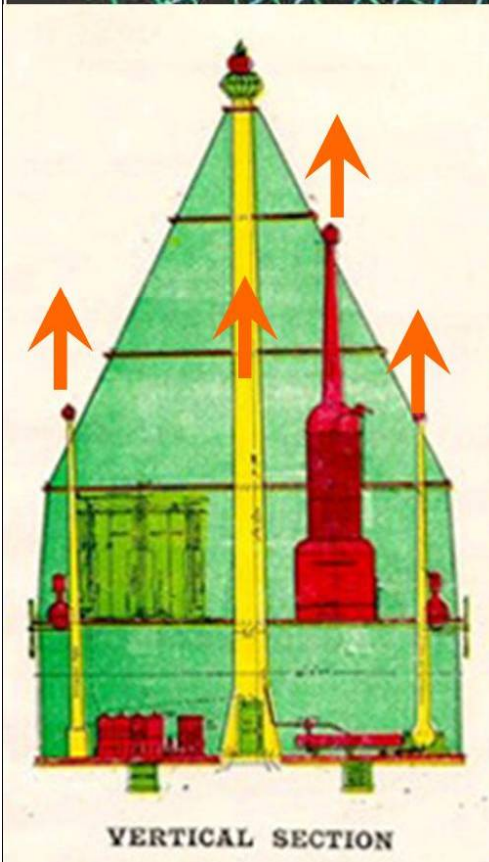
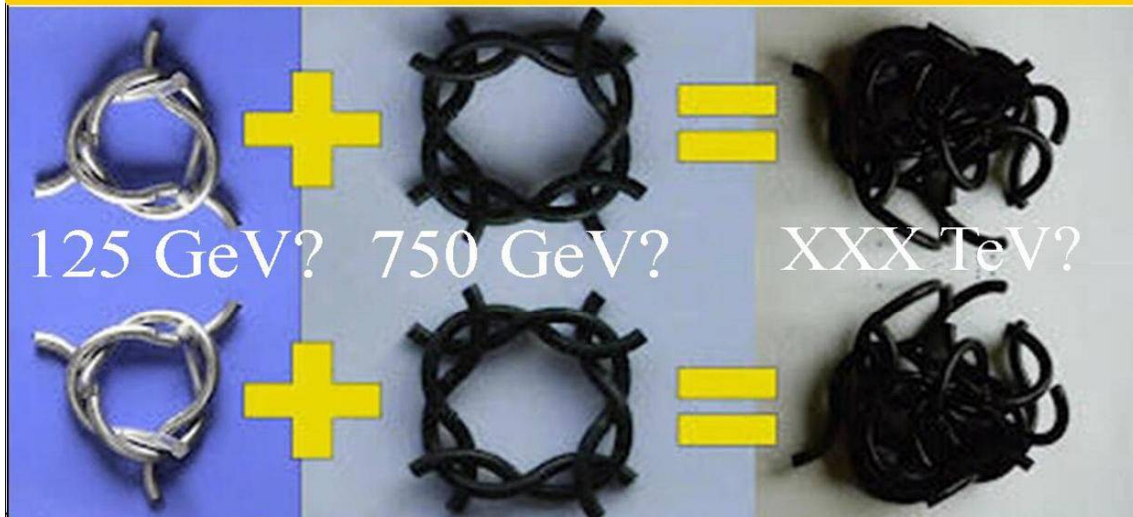


Figure 3. Examples of suggested historical Anti Maxwell reaction less space propulsion.

Additional information about Q-FF Theory.

LHC 125,750+XXX GeV, Higgs presented as 3D Quantum knots.

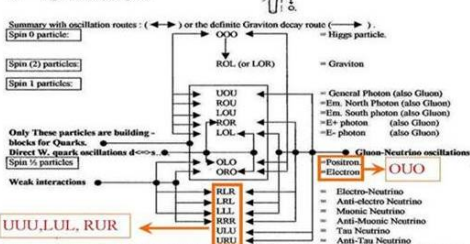


According to Q-FFF Theory, the single Higgs vacuum particle itself is massless. However merger particles could for different Quantum Knots with various masses and shapes.

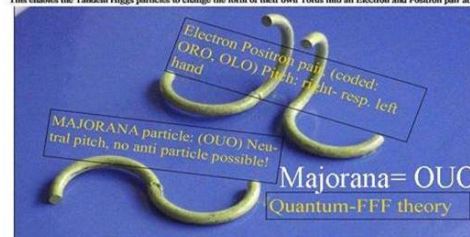
MAJORANA particle's placed in the new extended standard model based on Q-FFF Theory. OOU is e-e+ related, UUU, LUL,RUR are Neutrino related. Called sterile Neutrinos.

The coding of Single Elementary Particles is based on the so called "rotational click positions" of the three hinges, which are assumed to be regularly placed over the ring shaped Higgs "Quatron Tonus Particle" (page 2). This ring has one splitting point and three hinges which have consequently four 90 degree click positions each. The best Tonus ring diameter ratio to click-on is about 1/7. The ring coding of the hinge positions is as follows.

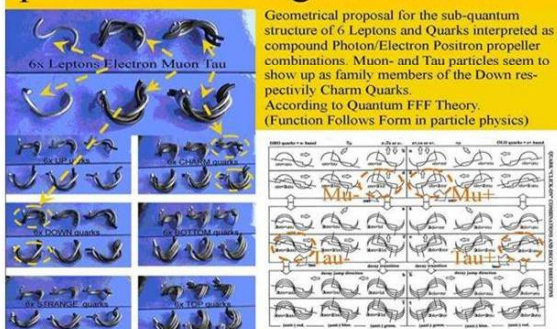
Explanation of the codes:
 U= Up rotation (180 degrees)
 O= Unchanged circle
 L= Left rotation (90 degrees)
 R= Right rotation (90 degrees)



Higgs particles are supposed to oscillate in Tandem along so called linear Vacuum Lattices, two by two in opposite directions, as the symmetrical opposite pistons of a boxer engine, as the origin of all energy, spin and mass effects. This enables the Tandem Higgs particles to change the form of their own Tonus into an Electron and Positron pair at



Geometrical proposal for most particles building the universe



Geometrical proposal for the sub-quantum structure of 6 Leptons/ Electron Muon tau combinations. Photon/Electron Positron propeller combinations. Muon- and Tau particles seem to show up as family members of the Down respectively Charm Quarks. According to Quantum FFF Theory. (Function Follows Form in particle physics)

All Photons (1x, graviton, 2x electr.- 2x magnetic- and 1x general (x-gamma-ray) photon) and two Fermions (Electron + Positron) are formed direct out of the "Mother" ring shaped Higgs particle, by internal hinge rotation (below). Dark Matter particles are supposed to be formed by interlocking 3 or 4 photons (below). Neutrinos are deformed photons or fermions. (not shown) See Quantum FFF Theory. (Function Follows Form) <http://vixra.org/abs/1103.0002>



Figure 4, particle schemes of Quantum FFF Theory.

Gravity direction dependent Lightspeed differences around the earth by ellipsoidal LASOF shaped frame dragging, measured even already by the LISA Pathfinder?

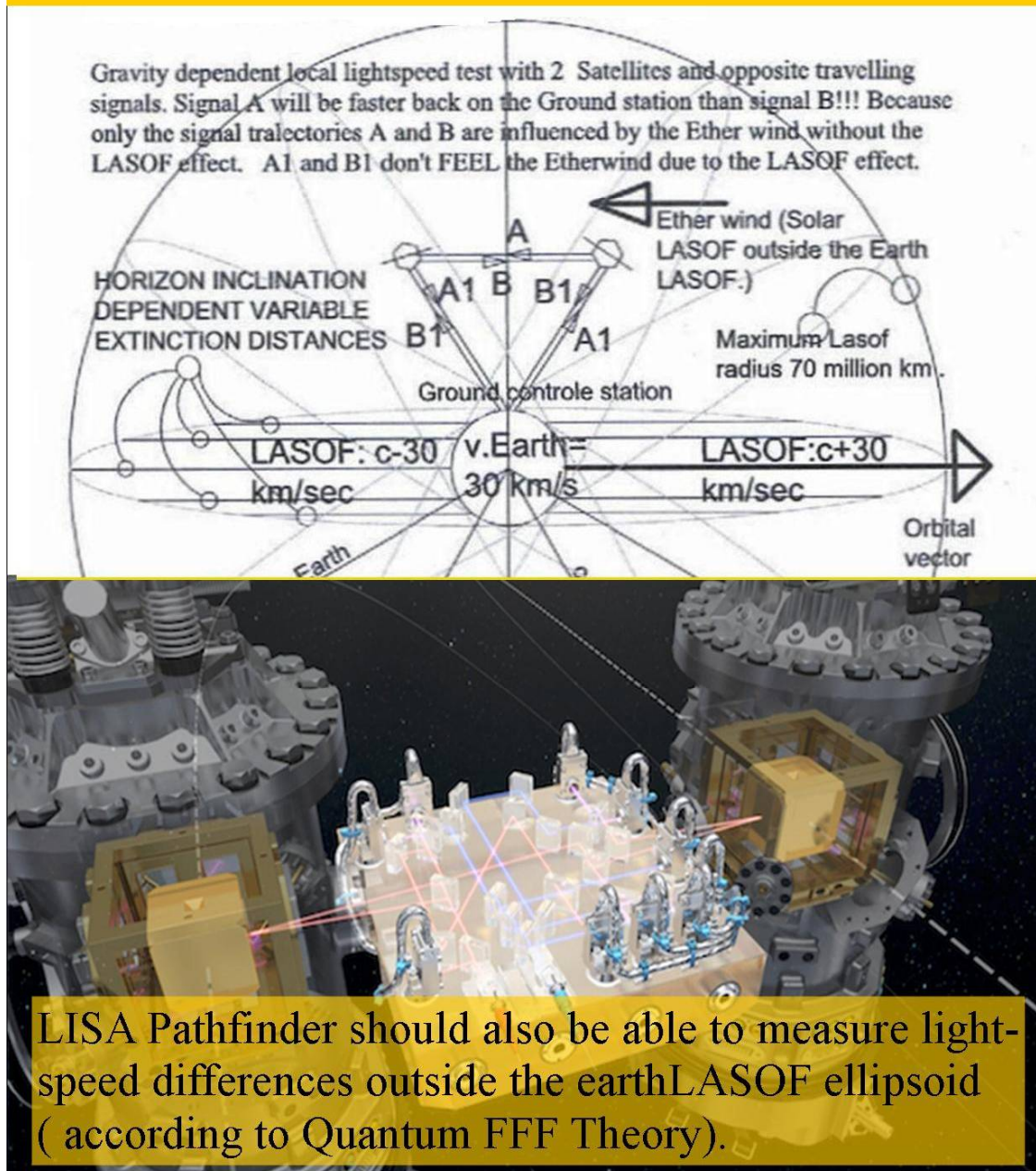


Figure7, Gravity dependent lightspeed anomalies.

Figure 7: Gravity direction dependent Lightspeed differences around the earth and the sun by ellipsoidal LASOF frame dragging, measured even already by LISA Pathfinder?

LISA Pathfinder should also be able to measure lightspeed differences outside the earth

LASOF ellipsoid (according to Quantum FFF Theory: Function Follows Form).

LASOF = Local A-Symmetrical Oscillating Frame.

<http://sci.esa.int/lisa-pathfinder/57385-freely-floating-in-space/>

sci.esa.int/lisa-pathfinder/57385-freely-floating-in-space/

see also: the O'Connell LASOF effect: <http://vixra.org/pdf/1409.0164v2.pdf>

vixra.org/pdf/1409.0164v2.pdf

See also: Since the LISA is also has also gravity direction anomaly equipment, the so called satellite FLYBY anomalies could come to more clarity.

Dayton Miller suggested already in 1925, that the altitude of lightspeed measuring above the earth surface (Mount Wilson) has a direct positive effect on the ether wind measurement results, which is in line with the LASOF ellipsoid drag area around the earth.

The cyclic Multiverse according to Q-FFFTheory.

The great Penrose High-Low Entropy misconception.
 Big Bang and Big Crunch originated by the splitting pairing and recycling via merging of central galaxy S-nova black holes . According to Quantum FFF Theory..

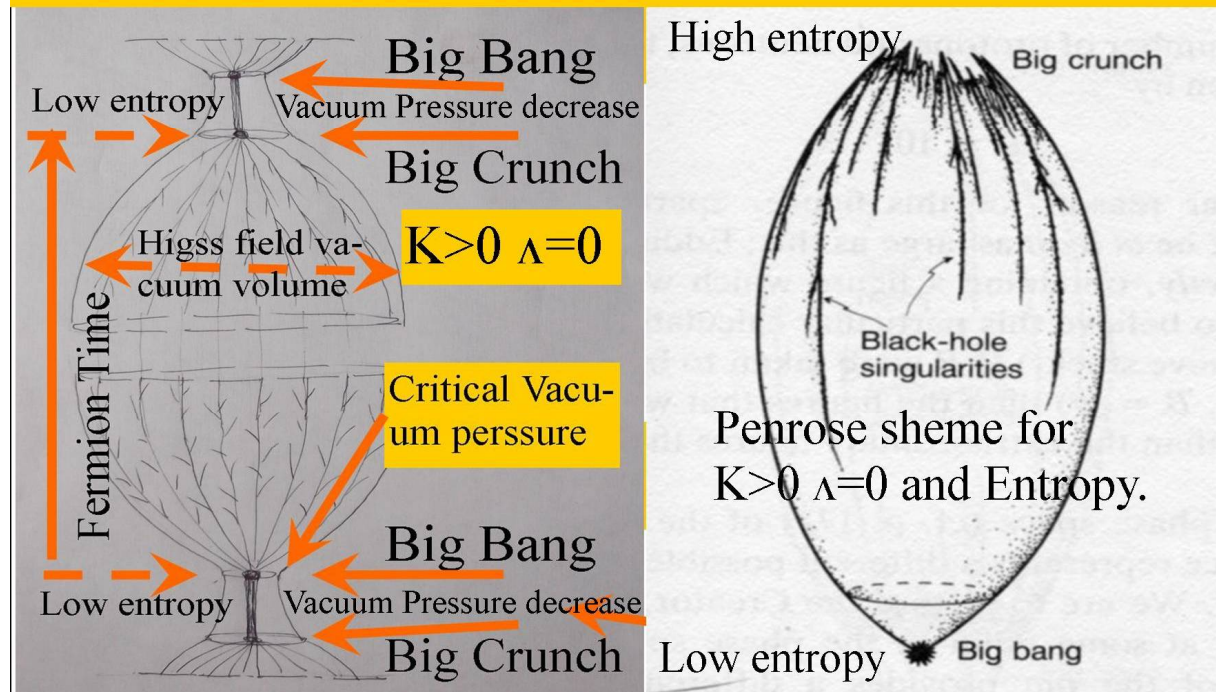
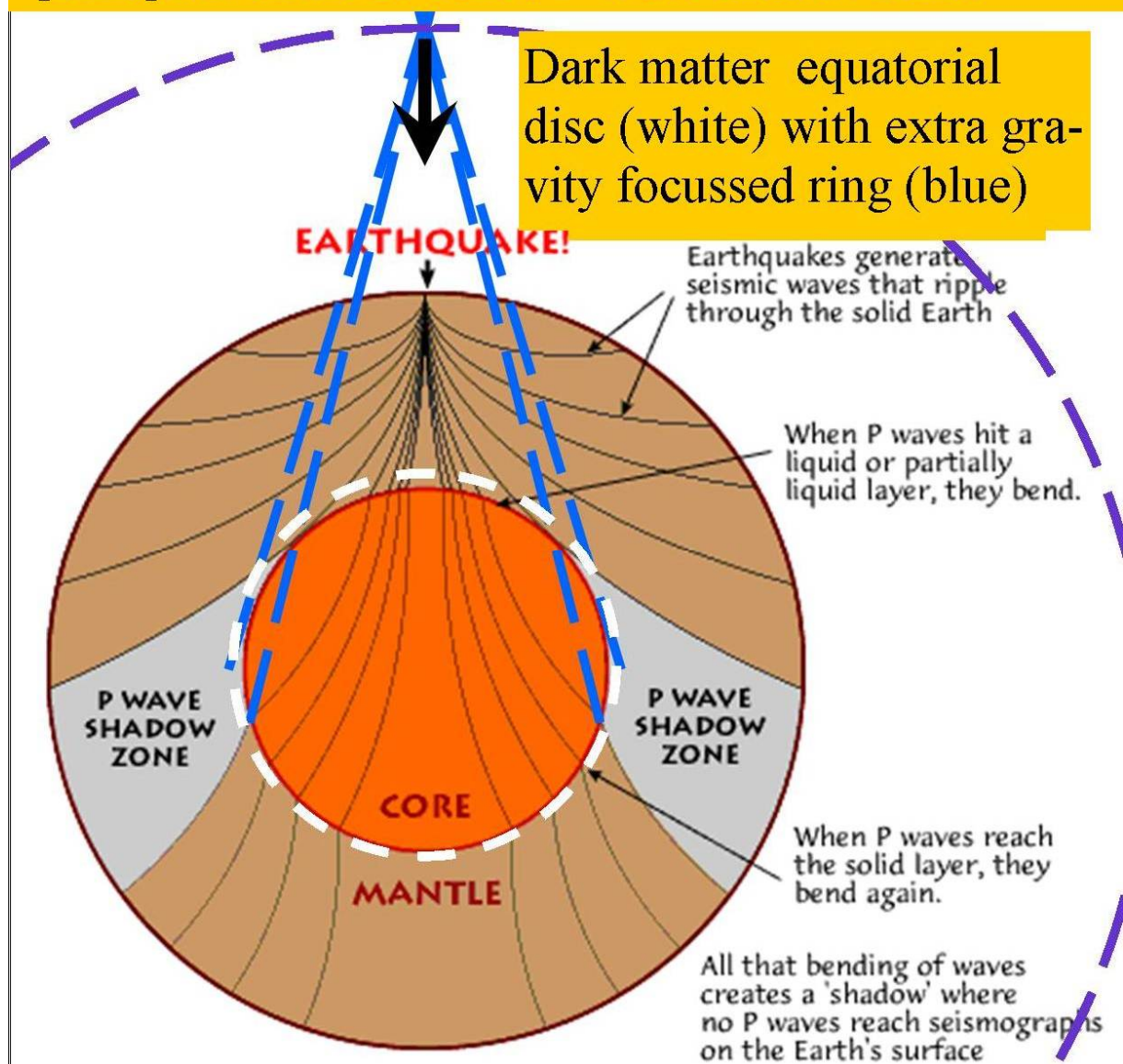


Figure8, The cyclic Multiverse with Entropy development in contrast with Penrose.

According to the Quantum-FFF model, (Function Follows Form) Microscopic Dark Matter (singularity black holes) are proliferated inside stars (sunspots), comets and ball lightning. Recent study (B. Harris) suggest, that also around earth an equatorial dark matter ring is present as the origin of the “Flyby anomaly”. However a DM equatorial disc located inside the earth (like sunspots) could solve the Flyby anomaly better and perhaps even the so called P-Wave shadow zone.

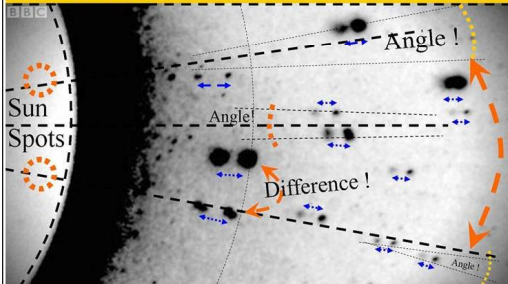


Figure, 9, Flyby anomaly explained by earth internal rings of cometary dark matter black hole nuclei.

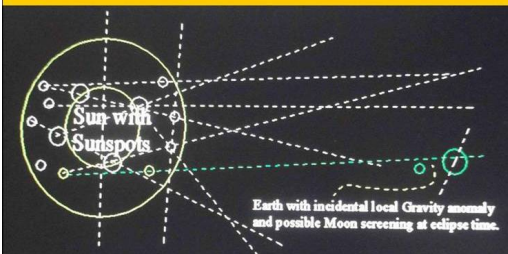
Sunspot gravity interference as the origin of Supernova ejection velocity differences simulated for massive stars.

Solar Lensing differences and Angle Shift

Solar gravitational lensing effect shows irregular differences in directions (see angle!) and displacements of background stars!!(see. difference!) Suggestion: there are different centres of gravity inside the sun by gravitational Sunspots ! They seem to be the "new" black holes, as suggested by Quantum Function Follows Form Theory. (Author: Leo Vuyk).



"Angle Shift" and "Lensing Differences" explained by Solar pencil shaped gravity increase by aligned Sunspot black holes according to Quantum FFF Theory. See also: incidental local Earth effects.



Below, example of velocity differences of Super Novas <http://arxiv.org/abs/1503.02199> THE THREE DIMENSIONAL EVOLUTION TO CORE COLLAPSE OF A MASSIVE STAR (simulation by S.M.Couch at al.)

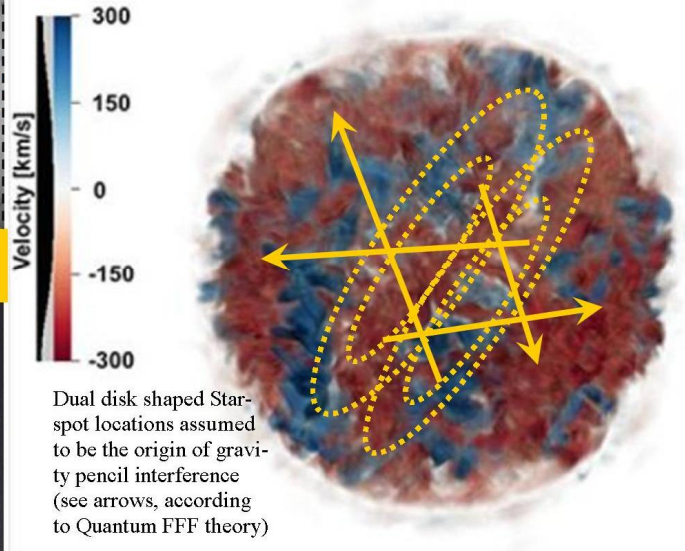
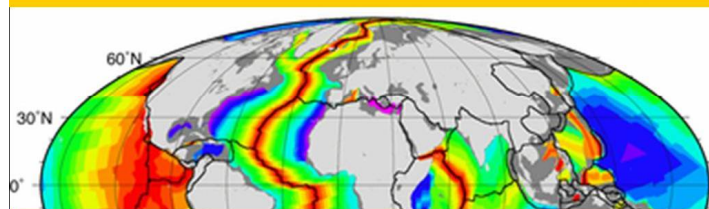
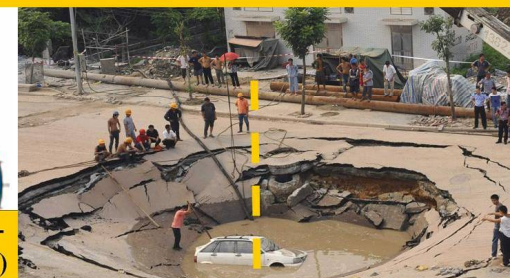
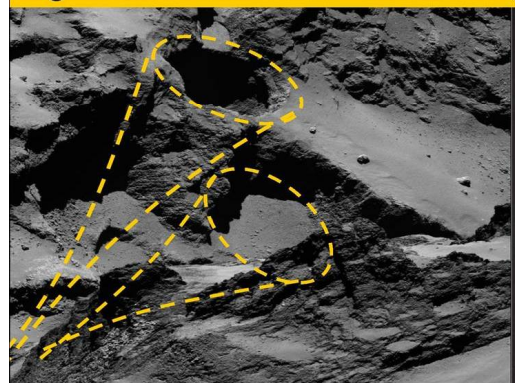


Figure 10, Sunspot dark matter black hole effect on background stellar lensing directions.

Gravity anomalies of Sinkholes related to the Expanding Earth by internal micro new paradigm electric dark matter black holes. According to Quantum FFF Theory.



Sinkholes in Comet 67P C-G. originated by new paradigm electric dark matter black holes (Q-FFF Theory)



TWO aligned new black holes



Figure 11, Gravity anomalies by aligned earth internal dark matter black holes.

Temporary spokes at the rings of Saturn are a mystery for NASA. Quantum FFF Theory offers a suggestion: Lighthouse pencil gravity effect by dual alignment of internal Cometary black holes positioned inside Saturn just like Earth..

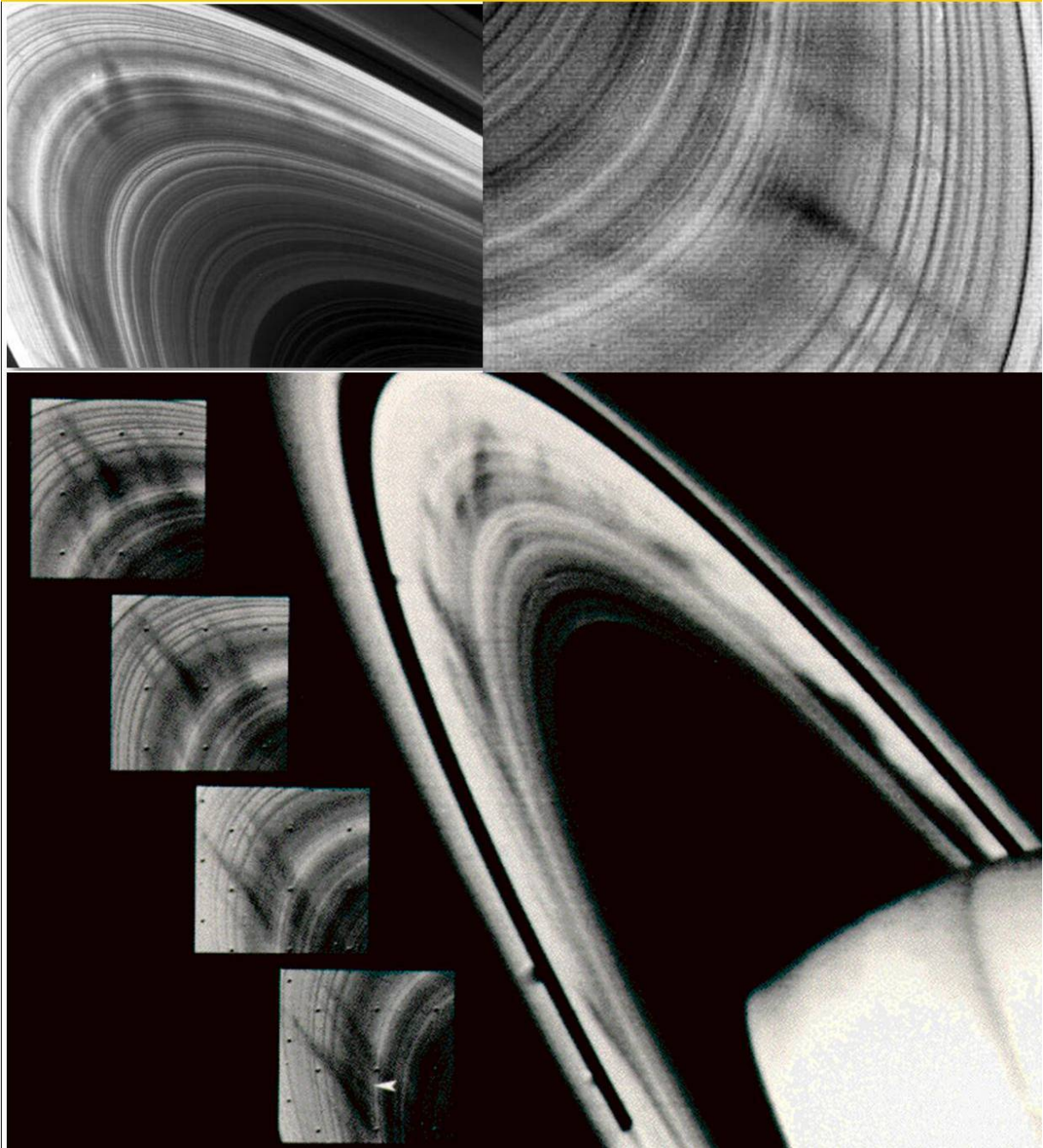


Figure 12, Temporary spokes inside Saturn's ring, by the pencil shaped gravity influence of aligned internal dark matter black holes. (former crashed Comet nuclei)

Spooky gravity lensing effects by dual micro black holes, as the remnants of crashed comet nuclei inside earth and moon

In general, Volcano-, Geysir- and sinkhole activity on planets and moons, could be also related to such dual alignment of internal remnants of crashed comets. According to Quantum FFF Model. ALSO ON EARTH we may expect such gravity anomalies called SPOOKY /magnetic /gravity hills. (see below) and also related to the FlyBy anomalies. See also: LIST OF GRAVITY HILLS ON EARTH: https://en.wikipedia.org/wiki/List_of_gravity_hills

Gravity lensing anomalies related to multiple micro-dark matter black hole configurations left behind by crashed Comets on Earth (Mexico, left) and Moon (right).

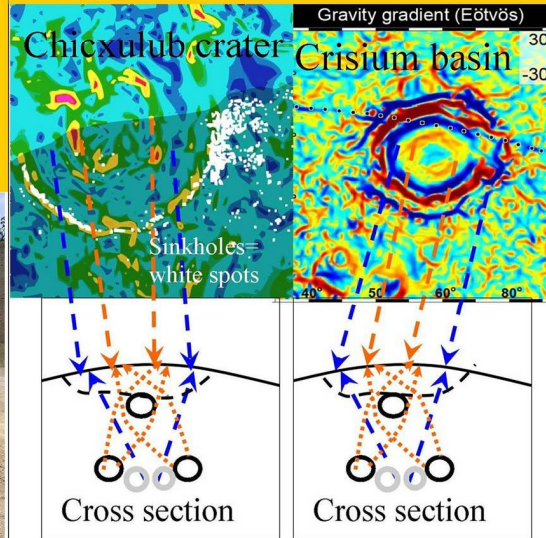
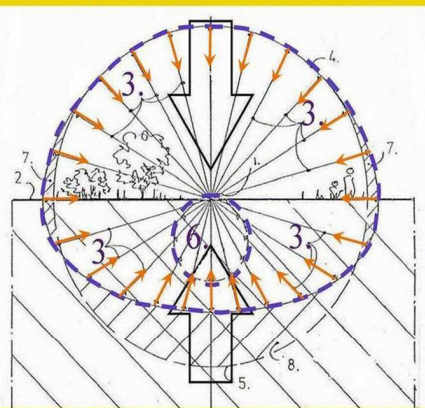


Figure 13, Anomalous gravity effects on Earth and Moon also by aligned internal dark matter black holes (former Comet nuclei)

Other recent Q-FFF posters:

Equivalence between gravity and acceleration does not hold in Quantum FFF Theory. Mass in motion needs a reference frame of ZPE oscillating Higgs field and Lorentz polarization of conscious propeller Fermions (s) to keep a non accelerated flight.

Quantum Gravity as pressure distribution of the oscillating dual Higgs/Graviton vector field.



Cross section through the dual Higgs/ Graviton 3D vector field pressure distribution (or globular Hedgehog) on a point mass (1) located on earth's surface (2), according to Quantum FFF theory. 3+4= Higgs vector field. 6= Graviton vector field originated by the Higgs-graviton field transformation of the earth itself. 7+8= differences with a perfect globular vector distribution. Field variables 3+6 are rendered as inversed arrows. (see also black hole pressure distribution without gravitons)

Polarized Fermion Mass in motion through the resistive, but also pushing oscillating Higgs vacuum (according to Quantum FFF theory)

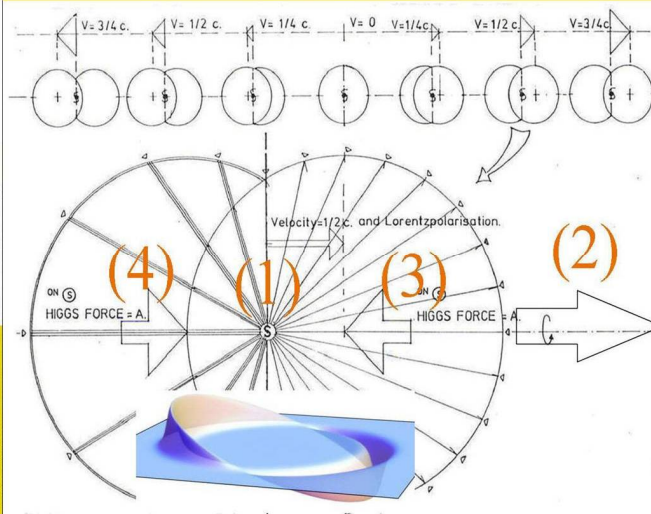


Figure 14, Quantum gravity.

Secondary and tertiary Dual BH Herbig Haro systems, as the origin of different shaped dwarf galaxies and Star clusters.

Below: Simplification of different sized dual black hole (5) based Herbig Haro Systems with dwarf and star formation in between, in the halo of the MW.

Dual Galaxy- and Stellar Anchor Black Holes (G-SABHs) as former Herbig Haro bowshecks, observed in deep space or Planetary Nebula.



Dual black hole systems of all scales. Galaxy and Stars are supposed to be the origin of the self organising universe according to a new electric dark matter black hole model called Quantum FFF Theory. See: Image credit: Prathamesh Tamhane/Yogesh Wadadekar

According to Quantum FFF Theory, Black holes create Proton-Electron plasma at the Fermion repelling horizon. As a consequence dual black hole systems like Herbig Haro objects are equipped with dual EM jets, supported by cone shaped Casimir pressurized Higgs field vacuum polarization. Birkeland and Alfven current circuits are supposed to be the result. Higgs-Casimir pressure vectors are depicted above and below.

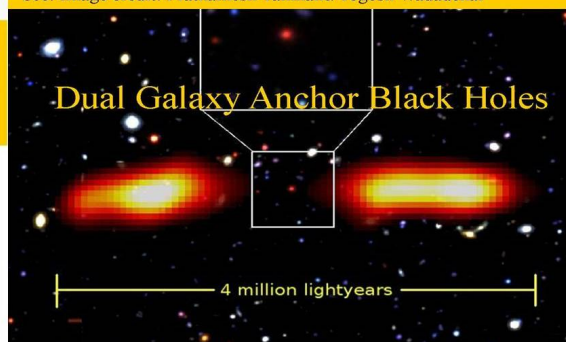
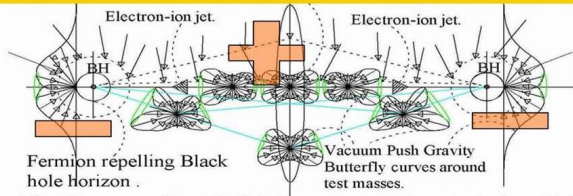
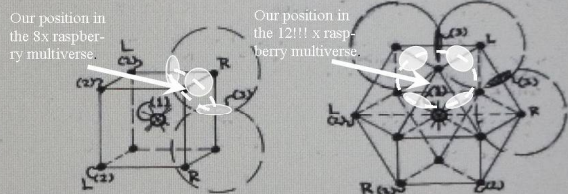


Figure 15, HH systems.

Our position in the 8 or 12 !!! fold raspberry multiverse. Elliptic shaped CMB peak radiations are tell tales. (left). At the rightside a 12 fold symmetric cube octahedron multiverse diagram is depicted with red: matter and green: anti matter entangled universes.

CONFIGURATION FOR 8 OR 12 UNIVERSES.



- 1: pre-virgin singularity.
- 2: virgin singularity with (L) left or (R) right handed spin. (R and L are always opposite)
- 3: contact areas of expanding Universes. (L and R handed Universes will annihilate each other)

Three extreme fluctuations (elliptic shaped peaks) in the Cosmic Background radiation tell us about our position inside the 8-or 12 fold raspberry multiverse, according to Quantum FFF Theory.

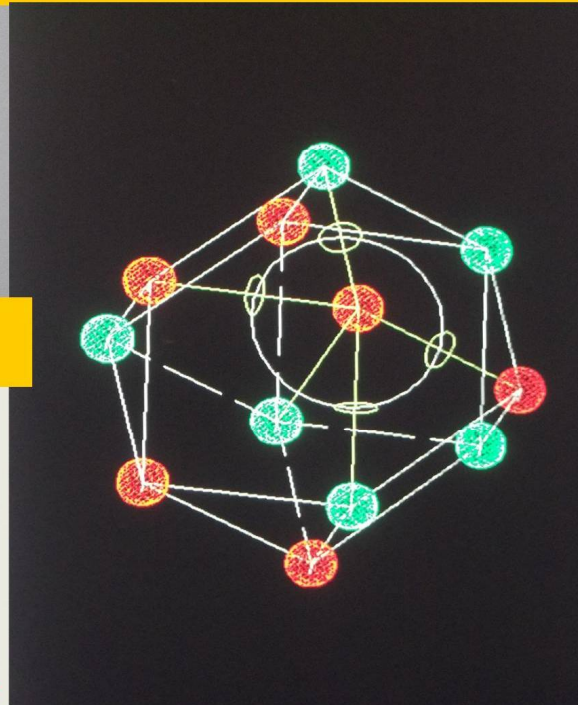
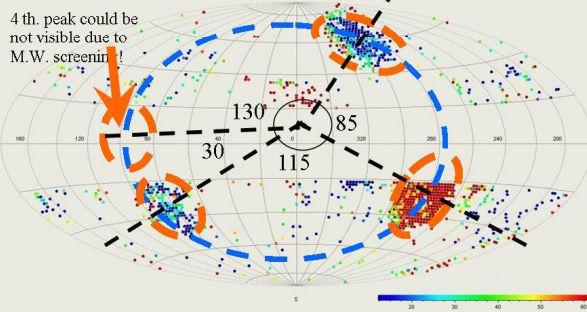
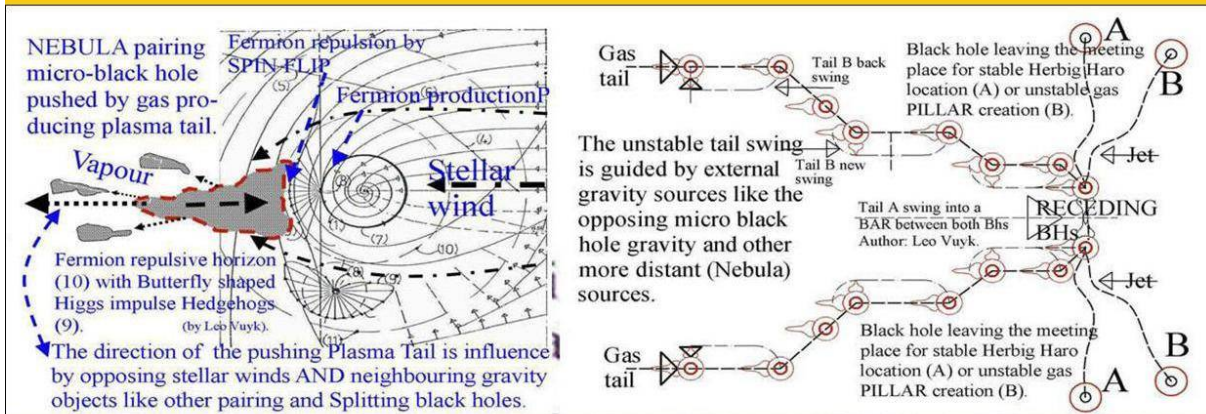


Figure 16, Cube Octahedron or Cube?

Splitting and pairing electric dark matter black holes. Magic self propelling in space and even on earth according to Quantum FFF theory.



Several accelerating pairing and receding micro black holes, as the start of HH objects, in the Carina nebula, with temporary meeting place (A) and ionised plasma tail.(Quantum-FFF Theory)

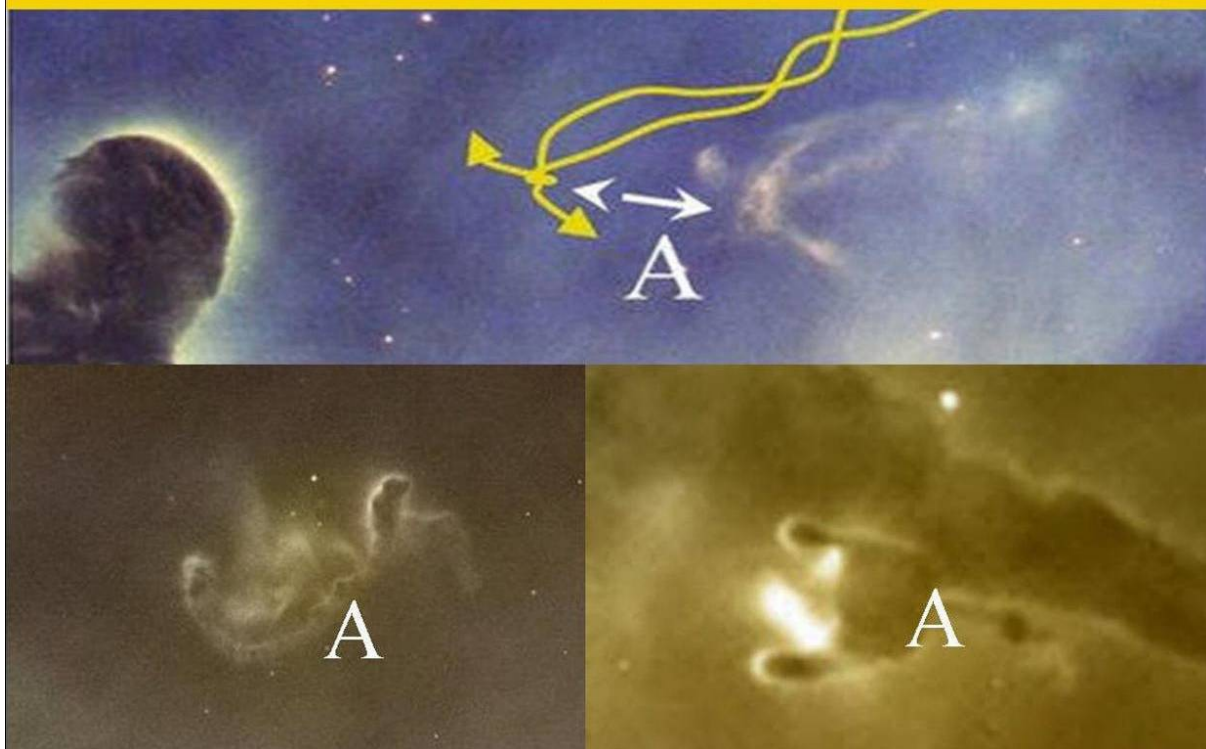


Figure 17, Splitting and pairing electric dark matter blackholes.

Dual micro black holes form macroscopic Casimir cavities, able to create INERTIAL acceleration (A) on a mass (B) located asymmetric at the mutual black hole axis. According to Quantum FFF theory. (For system principles, see Flickr nr: 348.)

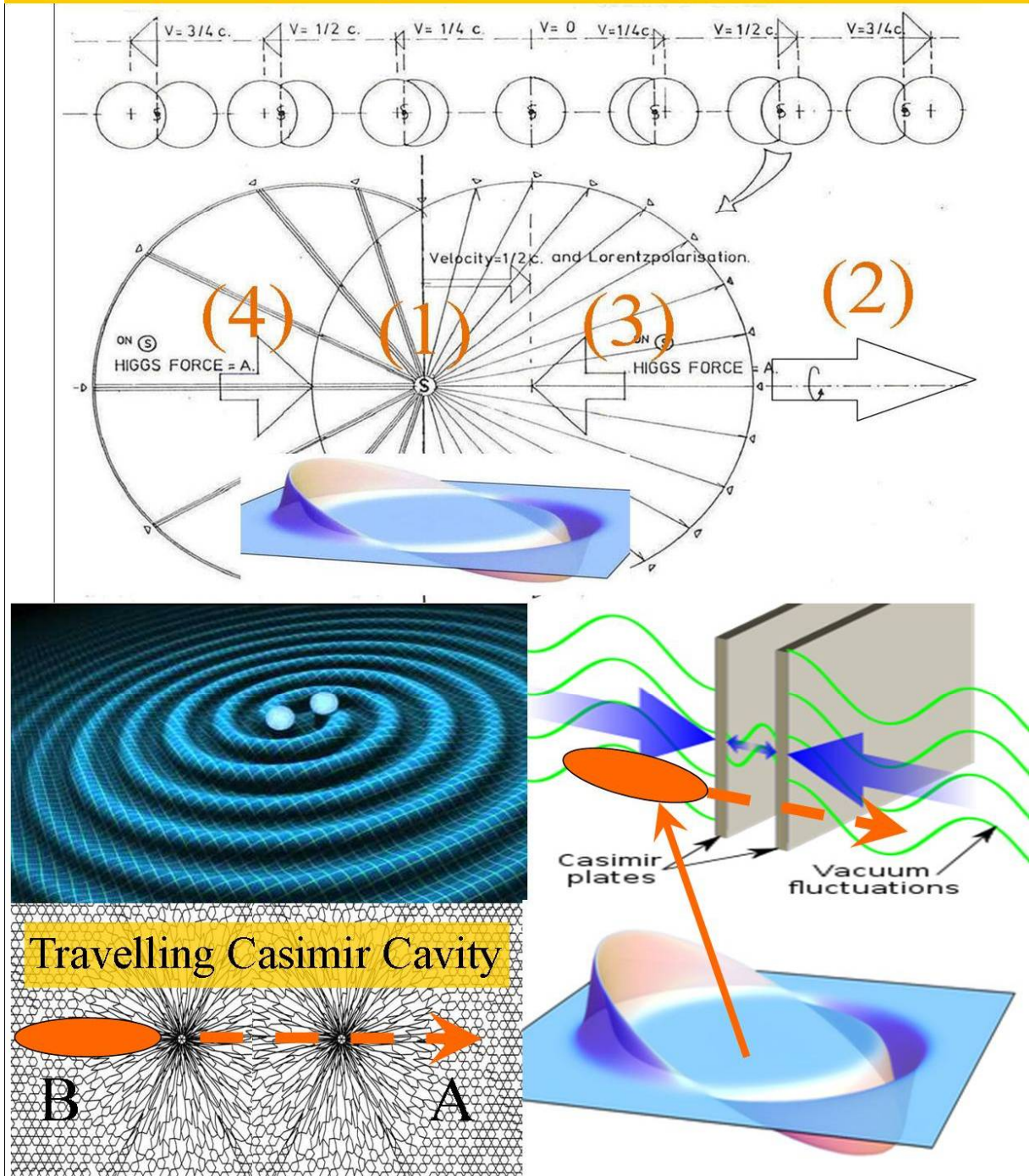
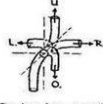


Figure 18, LIGO gravity lawn sprinkler effect.

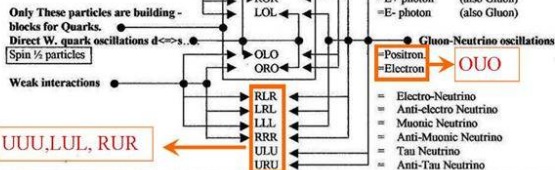
4D Quaternion rotation resemblance with Rigid String Mutation by internal 90 Degree Rotations.

The coding of Single Elementary Particles is based on the so called "rotational click positions" of the three hinges, which are assumed to be regularly placed over the ring shaped Higgs "Quatron Torus Particle" (page 2). This ring has one splitting point and three hinges which have consequently four 90 degree click positions each. The best Torus ring diameter ratio to click-on is about 1/7. The ring coding of the hinge positions is as follows.

Explanation of the codes:
 U= Up rotation (180 degrees)
 O= Unchanged circle.
 L= Left rotation (90 degrees)
 R= Right rotation (90 degrees)

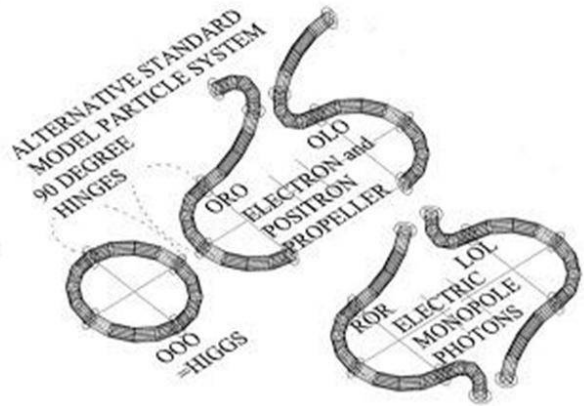


Summary with oscillation routes: (↔) or the definite Graviton decay route (→).
 Spin 0 particles: OOO = Higgs particle.
 Spin 2 particles: ROL (or LOR) = Graviton.
 Spin 1 particles: UOU, ROU, LOU, ROR, LOL = General Photon (also Gluon), Em. North Photon (also Gluon), Em. South photon (also Gluon), E+ photon (also Gluon), E- photon (also Gluon).

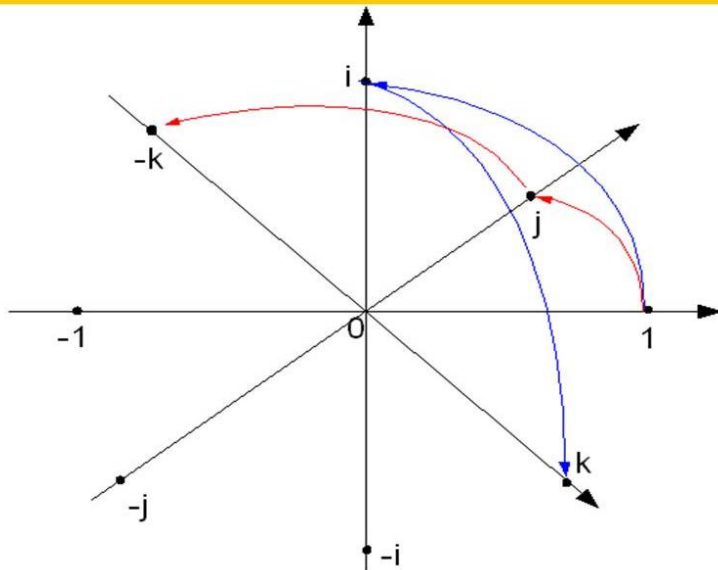


Only These particles are building blocks for Quarks.
 Direct W. quark oscillations d ↔ s.
 Spin 1/2 particles: UUU, LUL, RUR.
 Weak interactions: RLR, LRL, LLL, RRR, ULU, URU.

Higgs particles are supposed to oscillate in Tandem along so called linear Vacuum Lattices, two by two in opposite directions, as the symmetrical opposite pistons of a boxer engine, as the origin of all energy, spin and mass effects. This enables the Tandem Higgs particles to change the form of their own Torus into an Electron and Positron pair at



90 degree rotation of the rigid Higgs ring over three hinges, with interlocked merger Quarks (Quantum FFF Theory)



Graphical representation of quaternion units product as 90°-rotation in 4D-space

$$\begin{aligned} ij &= k \\ ji &= -k \\ ij &= -ji \end{aligned}$$

Figure 19, 4D Quaternion rotations compared with Quantum FFF 90 degr. hinging models.

Harvesting ZPE energy by a Vajra antenna



Dual Electric Black Hole ball lightnings stabilised by dual Vajra antennas seem to be the best possible option to harvest ZPE energy from the vacuum, according to QuantumFFF Theory

Dual Dark Matter Black Hole based sunspots seem to be responsible for strong magnetic field interference, just as observed for Herbig Haro objects and many other objects in the cosmos.

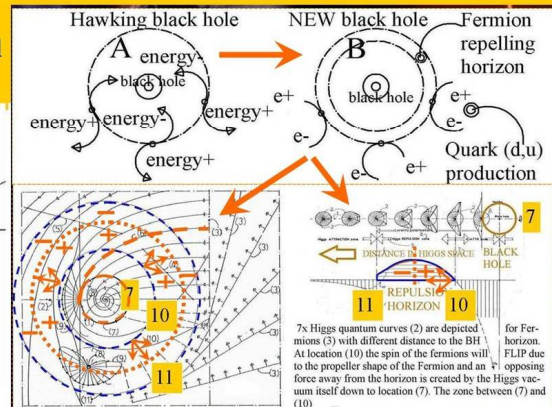
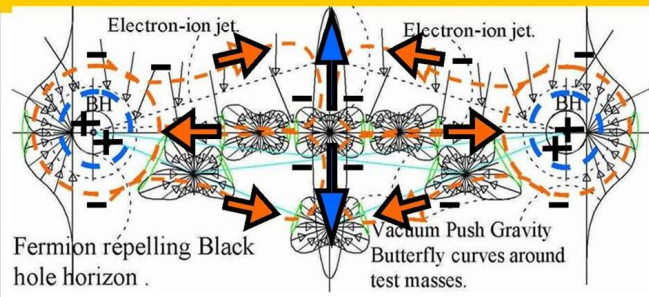


Figure 20, Harvesting vacuum energy by Vajra antenna.

References:

- [61.] The New God Particle and Free Will. Author: Leo Vuyk, LuLu publishers, 2008. ISBN number 978-1-4092-1031-3 <http://www.lulu.com/spotlight/LeoVuyk>
- [60.] Quantum FFF Theory is also published in the form of POSTERS at the Flickr site: <http://www.flickr.com/photos/93308747@N05/>
- [59.] Numbered listing of Vixra essays by Leo Vuyk. http://vixra.org/author/leo_vuyk
- [58] viXra:1503.0186 Primordial Dark Matter Black Holes Outside Galaxies Responsible for the Creation and Contraction of a Cyclic Universe? 22
- [57] viXra:1503.0097 Quantum FFF Theory, Poster News 4.2
- [56] viXra:1502.0086 Parity and Chirality as a Base for Quark-Gluon Plasma and Dust Creating Black Holes and the Beginning and End of Time..
- [55] viXra:1411.0039 Quantum FFF Theory, Poster News 2
- [54] viXra:1410.0039 Evidence for Dark Matter Black Hole Based Plasma, Dust and Ice Production Inside Comets Like 67P,C-G. and the Growing Earth.
- [53] viXra:1409.0164 The O'Connell Effect in Eclipsing Binaries Explained by Mass Related Light Speed Extinction Distances (Lasof) of Stars and Even Planets.
- [52] viXra:1407.0001 Evidence for Evaporating Dark Matter Particles in Silicon Fireballs.
- [51] viXra:1406.0076 Galaxy Formation and Evolution According to Quantum FFF Theory.
- [50] viXra:1406.0019 Quantum FFF Theory Proposals for Some Unsolved Physics Problems.
- [49] viXra:1405.0224 Dual Star Ejection in Open Star Clusters by the Central Star.
- [48] viXra:1404.0151 Future Free Energy of New Physics Ball Lightning Black Holes, the Origin of a Super Social Society or the Opposite?
- [47] viXra:1404.0002 Proposal for the Origin of Unexpected Large B-Modes Found in the Bicep2 Measurements.
- [46] viXra:1402.0132 Reconciliation of GR and QM by a New Gravity-Black Hole and Lightspeed Model Called Quantum- FFF Theory.
- [45] viXra:1402.0044 The Impossible Zero Point Electric Black Hole as the Origin of New Physics even for Comets like 67P,C-G.
- [44] viXra:1401.0115 Calabi Yau Shaped Double Fermion Spin States.
- [43] viXra:1401.0071 Democratic Free Will in the Instant Entangled Multiverse.

[42] viXra:1312.0143 The Navel Cord Multiverse with Raspberry Shape, a Super Symmetric Entangled 12 Fold Bubble Universe.

[41] viXra:1312.0076 Are Sunspots Made of Gravitating Dark Matter Black Holes?

[40] viXra:1310.0101 The New Nuclear Magic Number (34) Explained by the Polar Coaxial Ring System of Quantum FFF Theory.

[39] viXra:1310.0059 The Semi Relativistic Higgs Field Aether with Mass Related Lightspeed Adaptation.

[38] viXra:1309.0081 New Physics by Table Top Experiments.

[37] viXra:1308.0083 23 The Raspberry Shaped Super Symmetric Multiverse

[36] viXra:1307.0068 Quantum Function Follows Form Theory, the Small Scale, Posters part 1.

[35] viXra:1307.0067 Quantum Function Follows Form Theory, the Large Scale, Posters part 2.

[34] viXra:1306.0218) Dark Matter UFO Dust Particles or Quantum Knots in the LHC at CERN ?

33, viXra:1306.0065 The Splitting Dark Matter- Black Hole- Big Bang and the Cyclic Multiverse.

32, viXra:1305.0140 Quantum FFF Theory Experiments, a Summary.

31, viXra:1305.0041 The Shnoll Effect Explained by Quantum FFF Theory.

30, viXra:1304.0022 The Self Organizing Universe in the Carina Nebula.

29, viXra:1303.0211 Hubble Redshift Combined with Universal Contraction is Possible.

28, viXra:1303.0053 Micro Birkeland Currents Between Two RF Generated Plasma Balls in the Laboratory.

27, viXra:1302.0172 Silicon Based Ball Lightning Globule Structures and Signs for Accumulation and Retarded Decrease of Tunnelling Energy Bullets.

26, viXra:1301.0088 Two or Three Large Quasar Groups (LQGs) Located at the Start of Two or Three Lyman Alpha Systems and a Part of the Raspberry Multiverse?

25, viXra:1301.0050 Dwarf Galaxies and Their Relation with Dark Matter Based Galaxy Anchor Black Holes (Gabhs).

24, viXra:1210.0177 Instant Broglie Bohm Pilot Waves, the Origin of All Entanglement Effects in the Lab and Wavefunction Collapses in Our Universe as Related to Our Opposing Anti-Copy Universe(s) According to Quantum FFF Theory.

23, viXra:1209.0092 New Dark Matter Black Holes and a New Dark Energy Higgs Field, Lead to a Bouncing CP Symmetrical Multiverse, and New Experiments.

22, viXra:1209.0061 Birkeland Currents, Sunspots, Comets and Ball Lightning Originated by New Paradigm Dark Matter Black Holes.

21, viXra:1209.0030 Majorana and Sterile Neutrino Solutions in the Quantum-FFF Model.

20, viXra:1208.0031 Clumpy Dark Matter Around Dwarf Galaxies a Support for an Alternative Black Hole Theory According to the Quantum Function Follows Form Model.

19, viXra:1202.0091 Earth Magnetic Monopole Array Field Interaction with Cyclotron – Synchrotron Electrons and Muon Conversion Used for Levitation Systems.

18, viXra:1201.0092 Earth Magnetic Monopole Array Field Interaction with Cyclotron Electrons used for Levitation Systems.

17, viXra:1112.0065 24 LHC Signals Between 121-130 Gev Interpreted with Quantum-FFF Theory

16, viXra:1111.0096 Reconciliation of QM and GR and the Need for a Pulsating Entangled CPT Symmetric Raspberry Shaped Multiverse.

15, viXra:1111.0061 Black Hole Horizon Curvature Dependent Balance Between Plasma Creation and e-e+ Annihilation in Quantum FFF Theory.

- 14, viXra:1108.0036 Artificial Ball Lightning Production and Exploitation Device for Zero Point Electric Energy Usage.
- 13, viXra:1108.0006 Mass in Motion in Quantum FFF Theory
- 12, viXra:1104.0083 Quantum FFF Theory in Posters.
- 11, viXra:1104.0044 Ball Lightning, Micro Comets, Sprite-Fireballs and X-Ray/gamma Flashes According to Quantum FFF Theory.
- 10, viXra:1104.0002 Stellar Anchor Black Holes as the Remnants of Former Herbig Haro Objects
- 9, viXra:1103.0097 ZPE Zero Point Energy Examples Around Black Holes.
- 8, viXra:1103.0068 Funktion Follows Form, at the Quantum Scale and Beyond.
- 7, viXra:1103.0024 Quantum Gravity and Electro Magnetic Forces in FFF Theory
- 6, viXra:1103.0015 Wavefunction Collapse and Human Choice-Making Inside an Entangled Mirror Symmetrical Multiverse.
- 5, viXra:1103.0011 An Alternative Black Hole, Provided with Entropy Decrease and Plasma Creation
- 4, viXra:1103.0002 3- Dimensional String Based Alternative Particles Model
- 3, viXra:1102.0056 Experiments to Determine the Mass Related Lightspeed Extinction Volume around massive objects.
- 2, viXra:1102.0054 Atomic Nuclear Geometry Based on Magic Number Logic.
- 1, viXra:1102.0052 Construction Principles for Chiral “atoms of Spacetime Geometry

=====